

THE CATHEDRAL OF SAINT PAUL

BIRMINGHAM, ALABAMA



THE EIGHTEENTH SUNDAY IN ORDINARY TIME

AUGUST 5, 2018

Welcome to the Cathedral of Saint Paul. The order of Mass can be found on page 3 in the Sunday's Word booklets found in the pew racks. Please follow this order of worship for today's music.

ENTRANCE HYMN

AT THAT FIRST EUCHARIST

UNDE ET MEMORES

1. At that first Eu - cha - rist be - fore you died,
2. For all your church, O Lord, we in - ter - cede;
3. We pray for those who wan - der from the fold;

O Lord, you prayed that all be one in you;
O make our lack of char - i - ty to cease;
O bring them back, Good Shep - herd of the sheep,

At this our Eu - cha - rist a - gain pre - side,
Draw us the near - er each to each we plead,
Back to the faith which saints be - lieved of old,

And in our hearts your law of love re - new.
By draw - ing all to you, O Prince of Peace.
Back to the Church which still that faith does keep.

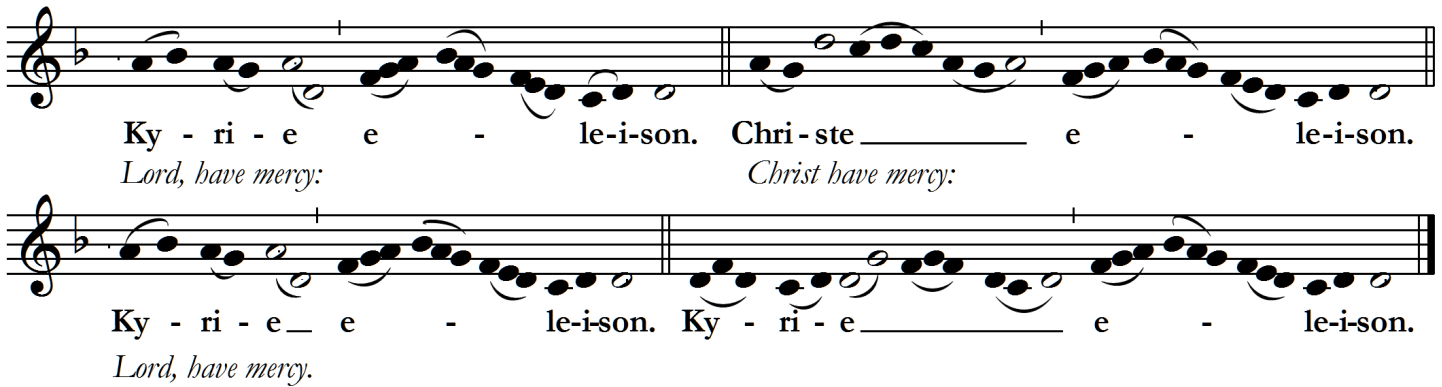
Thus may we all one Bread, one Bod - y be;

Through this blest Sac - ra - ment of U - ni - ty.

KYRIE (ALL MASSES)

MASS XI "ORBIS FACTOR"

Please repeat the "Kyrie" and "Christe" phrases after the cantor; then join in the final "Kyrie".

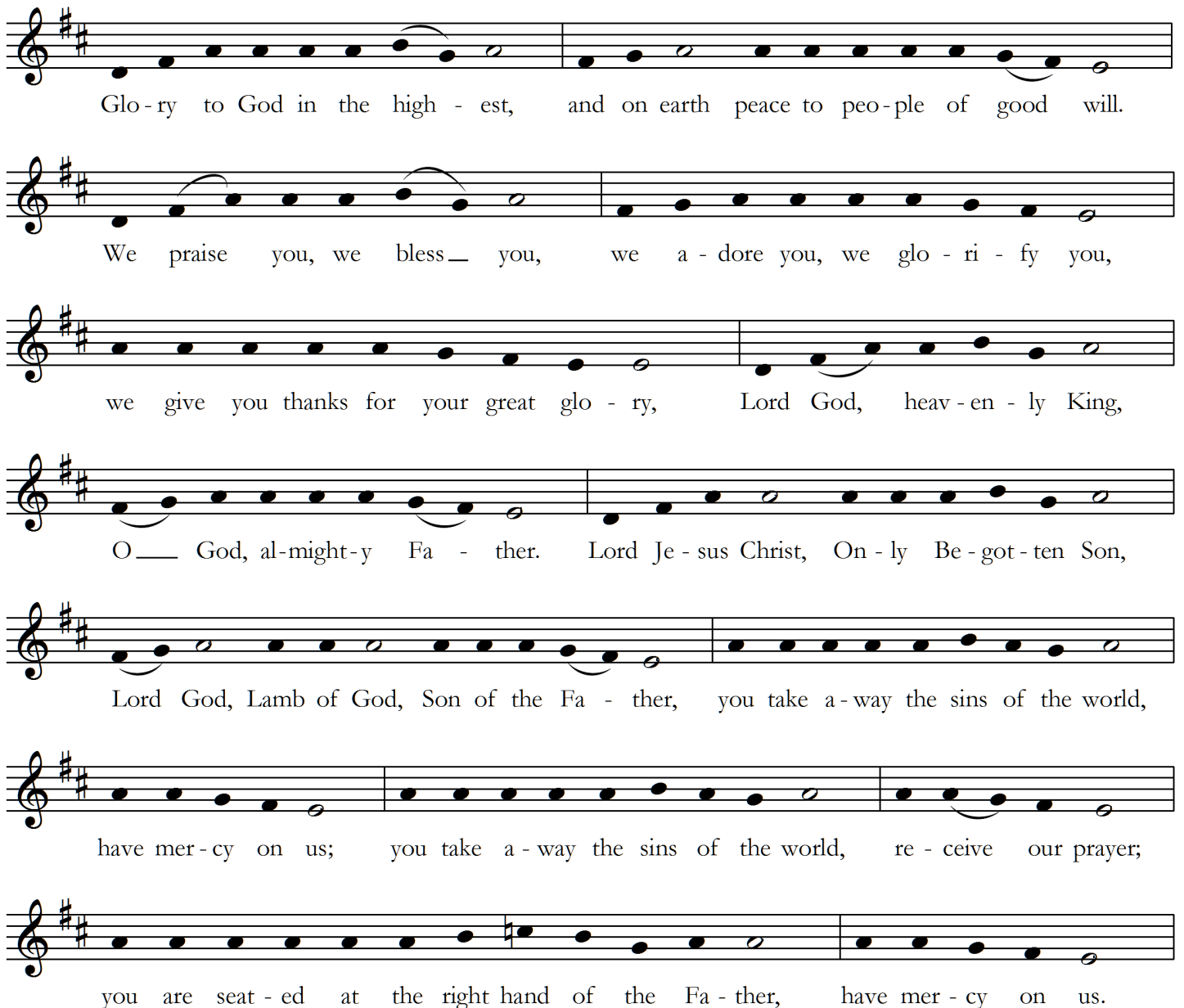


Ky - ri - e e - le-i-son. Chri - ste e - le-i-son.
Lord, have mercy: Christ have mercy:

Ky - ri - e e - le-i-son. Ky - ri - e e - le-i-son.
Lord, have mercy.

GLORIA

MISSA SIMPLEX



Glo - ry to God in the high - est, and on earth peace to peo - ple of good will.

We praise you, we bless — you, we a - dore you, we glo - ri - fy you,

we give you thanks for your great glo - ry, Lord God, heav - en - ly King,

O — God, al-might-y Fa - ther. Lord Je - sus Christ, On - ly Be - got - ten Son,

Lord God, Lamb of God, Son of the Fa - ther, you take a - way the sins of the world,

have mer - cy on us; you take a - way the sins of the world, re - ceive our prayer;

you are seat - ed at the right hand of the Fa - ther, have mer - cy on us.

For you a - lone are the Ho - ly One, you a - lone are the Lord,
 you a - lone are the Most High, Je - sus Christ, with the Ho - ly Spi - rit,
 in the glo - ry of God the Fa - ther. A - men.

THE LITURGY OF THE WORD

The Mass readings are found on page 120 in Sunday's Word.

FIRST READING

EXODUS 16:2-4, 12-15

RESPONSORIAL PSALM

PSALM 78:3-4, 23-24, 25, 54

VI

T He Lord gave them bread from heav-en.

Music: Richard Rice, © 2016, under Creative Commons 3.0

SECOND READING

EPHESIANS 4:17, 20-24

ALLELUIA

Al - le - lu - ia, al - le - lu - ia, al - le - lu - ia.

One does not live on bread alone, but by every word that comes forth from the mouth of God.

GOSPEL

JOHN 6:24-35

HOMILY

CREDO

UNIVERSAL PRAYER (GENERAL INTERCESSIONS)

LITURGY OF THE EUCHARIST

Page 7 in Sunday's Word

OFFERTORY

PRAISE, MY SOUL, THE KING OF HEAVEN

LAUDA ANIMA



1. Praise, my soul, the King of heav - en; To his
2. Praise him for his grace and fa - vor To his
3. Fa - ther - like he tends and spares us; Well our
4. Frail as sum-mer's flow'r we flour - ish, Blows the
5. An - gels, help us to a - dore him; You be -



feet your trib - ute bring; Ran - somed, healed, re - stored, for -
peo - ple in dis - tress; Praise him still the same as
fee - ble frame he knows; In his hands he gent - ly
wind and it is gone; But while mor - tals rise and
hold him face to face; Sun and moon, bow down be -



giv - en, Ev - er - more his prais - es sing: Al - le - lu - ia!
ev - er, Slow to chide, and swift to bless: Al - le - lu - ia!
bears us, Res - cues us from all our foes. Al - le - lu - ia!
per - ish, God en - dures un - chang - ing on; Al - le - lu - ia!
fore him, Dwell - ers all in time and space: Al - le - lu - ia!

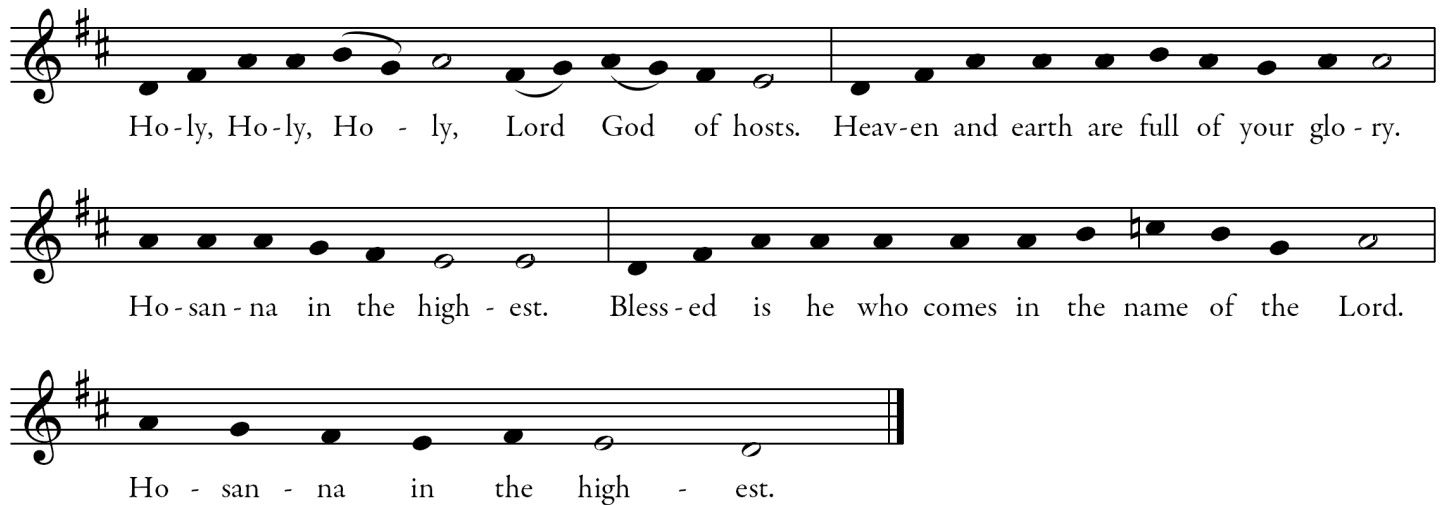


Al - le - lu - ia! Praise the ev - er - last - ing King.
Al - le - lu - ia! Glo - rious in his faith - ful - ness.
Al - le - lu - ia! Wide - ly yet his mer - cy flows.
Al - le - lu - ia! Praise the high e - ter - nal one!
Al - le - lu - ia! Praise with us the God of grace.



SANCTUS

MISSA SIMPLEX

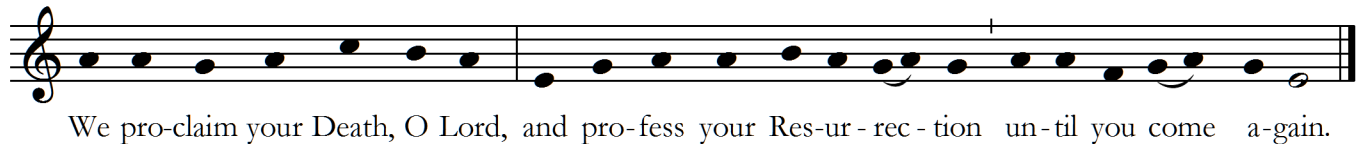


Ho-ly, Ho-ly, Ho - ly, Lord God of hosts. Heav-en and earth are full of your glo - ry.

Ho-san-na in the high - est. Bless-ed is he who comes in the name of the Lord.

Ho - san - na in the high - est.

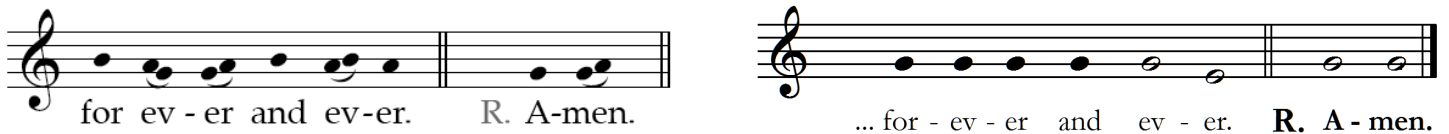
MYSTERIUM FIDEI



We pro-claim your Death, O Lord, and pro-fess your Res-ur-rec-tion un-til you come a-gain.

AMEN

After the Doxology, the people respond "Amen" according to one of the formulae below:

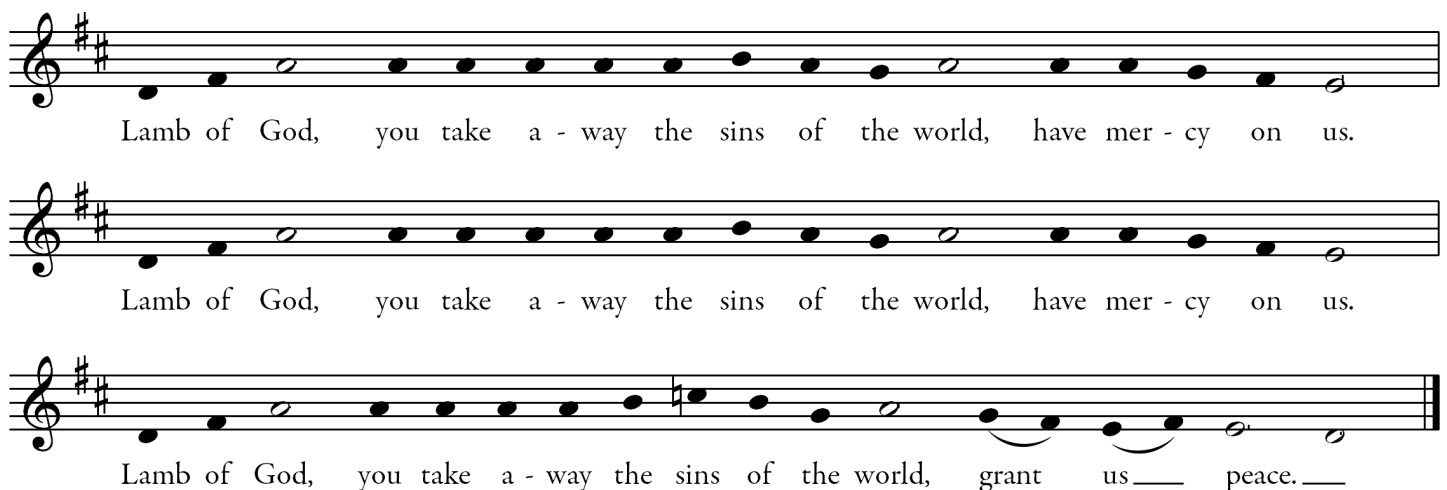


for ev - er and ev-er. R. A-men.

... for - ev - er and ev - er. R. A - men.

AGNUS DEI

MISSA SIMPLEX



Lamb of God, you take a - way the sins of the world, have mer - cy on us.

Lamb of God, you take a - way the sins of the world, have mer - cy on us.

Lamb of God, you take a - way the sins of the world, grant us — peace. —

HOLY COMMUNION

We invite all Catholics who are properly disposed (i.e., in the state of grace and having fasted for one hour before communion) to come forward in the usual way to receive Holy Communion.

All others, including our non-Catholic guests, may remain in their pews and join us in prayer. Alternatively, to participate in the communion procession and receive a blessing, come forward in the line and cross your arms over your chest as you approach the minister. Thank you.

COMMUNION ANTIPHON (ALL MASSES) *Panem de caelo*

WISDOM 16:20

Please join in singing the refrain below after the cantor introduction and between verses of Psalm 78.



Music: Adam Bartlett, © Illuminare Publications, Inc.

MARIAN ANTIPHON

Salve Regina (Simple Tone)

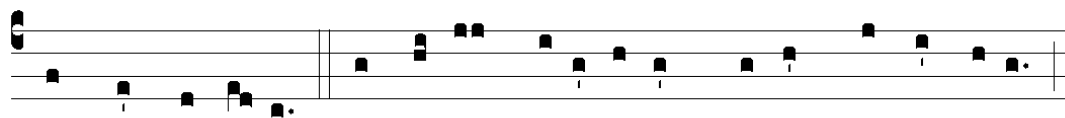
Please join in the antiphon below.

S Alve, Re-gi-na, * ma-ter mi-se-ri-córdi-æ; Vi-ta, dulcé-do
Hail, Holy Queen, mother of mercy, [our] life, [our] sweetness,

et spes nostra, salve. Ad te clamá-mus, éxsu-les fí-li- i Hevæ.
and our hope. To thee do we cry, poor banished children of Eve.

Ad te suspi-rá-mus, geméntes et flentes in hac lacrimá-rum valle.
To thee do we send up our sighs, mourning and weeping in this vale of tears.

E-ia ergo, Advo-cá-ta nostra, il-los tu-os mi-se-ri-córdes ócu-los
Turn then, most gracious advocate, thine eyes of mercy toward us.



ad nos convérte. Et Je-sum, bene-díctum fructum ventris tu-i,

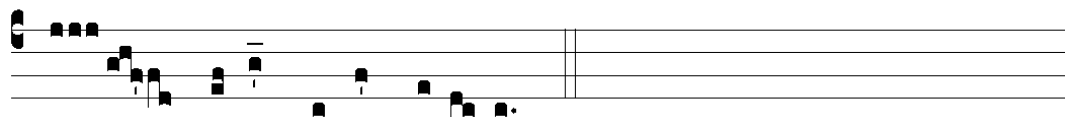
After this, our exile, show unto us the blessed fruit of thy womb, Jesus.



no-bis post hoc exsí-li-um osténde. O cle-mens, O pi- a,

O clement;

O loving [pious];



O dulcis Virgo Ma-rí- a.

O sweet Virgin Mary.

CLOSING

PRAISE TO THE HOLIEST

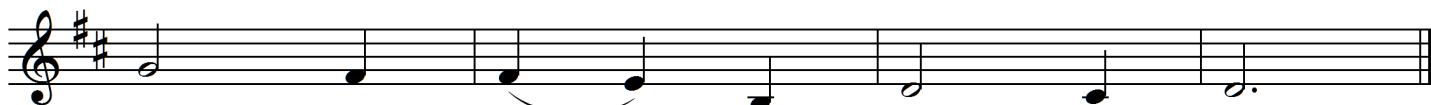
NEWMAN



1. Praise to the Ho - liest in the height, And in___ the
2. O lov - ing wis - dom of our God! When all___ was
3. O wis - est love! that flesh and blood, Which did___ in
4. And that a high - er gift than grace Should flesh and
5. Praise to the Ho - liest in the height, And in___ the



depth be praise; In all his words most won - der -
sin and shame, A sec - ond Ad - am to___ the
Ad - am fail, Should strive a - fresh a - gainst the
blood re - fine: God's pre - sence and his ve - ry
depth be praise; In all his words most won - der -



ful, Most sure___ in all his ways!
fight And to___ the res - cue came.
foe, Should strive,___ and should pre - vail;
self, And es - sence all - di - vine.
ful, Most sure___ in all his ways!

VOLUNTARY

PIÈCE HEROÏQUE

CÉSAR FRANCK

AS ALWAYS, SINGERS ARE NEEDED FOR CATHEDRAL CHOIR, CANTOR CORPS, AND SCHOLAE. THERE IS A PARTICULAR NEED FOR MORE CANTORS IN THE ROTATION AT THE 8:30AM MASS!

IN ADDITION, PLEASE REMEMBER THAT CATHEDRAL CHOIR WILL BEGIN REHEARSAL IN THE SECOND HALF OF AUGUST, WITH CHILDREN'S SCHOLA, MEN'S SCHOLA, AND LADIES' SCHOLA BEGINNING SHORTLY THEREAFTER. DESCRIPTIONS OF THE ENSEMBLES, AND OF THE CATHEDRAL MUSIC APOSTOLATE, CAN BE FOUND AT WWW.STPAULSBHM.ORG/SACRED-MUSIC.

THE SUMMER MONTHS ARE AN EXCELLENT TIME TO TAKE STOCK OF OUR TALENTS AND MAKE PLANS TO EXERCISE GOOD STEWARDSHIP OF OUR GIFTS IN THE COMING YEAR. PLEASE CONTACT THE DIRECTOR OF MUSIC, BRUCE LUDWICK, JR., FOR MORE INFORMATION AT LUDWICK@STPAULSBHM.ORG OR 205.251.1279X107. A BRIEF, LOW-STRESS AUDITION IS NECESSARY, BUT THE REWARDS OF MAKING THIS OFFERING TO THE LORD AND HIS CHURCH ARE IMMEASURABLE!



THE CATHEDRAL OF SAINT PAUL

2120 3RD AVENUE NORTH
BIRMINGHAM, ALABAMA 35203
WWW.STPAULSBHM.ORG 205.251.1279

THE MOST REVEREND ROBERT J. BAKER, STD
BISHOP OF BIRMINGHAM IN ALABAMA

THE VERY REVEREND BRYAN W. JERABEK, JCL
RECTOR

LITURGICAL SCHEDULE

SUNDAY MASSES

SATURDAY 5:00PM (ANTICIPATED), SUNDAY 8:30 & 11:00AM

WEEKDAY MASSES

MONDAY-FRIDAY, 6:30AM & 12:10PM

CONFESSIONS

MONDAY-FRIDAY, 11:30AM-12:00PM; SATURDAY, 3:00-4:00PM OR BY APPOINTMENT

COPYRIGHTS

All music used with permission. Onelicense #A702187