

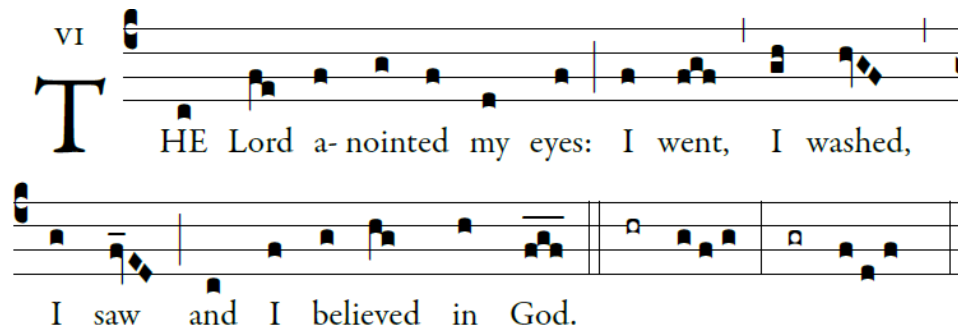
## HOLY COMMUNION

We invite all Catholics who are properly disposed (i.e., in the state of grace and having fasted for one hour before communion) to come forward in the usual way to receive Holy Communion.

All others, including our non-Catholic guests, may remain in their pews and join us in prayer. Alternatively, to participate in the communion procession and receive a blessing, come forward in the line and cross your arms over your chest as you approach the minister. Thank you.

COMMUNION ANTIPHON (ALL MASSES) *Dominus linivit oculus* CF. JN 9:11,36

*Please join in the refrain below after the cantor introduction and between each verse of Psalm 27.*



Adam Bartlett, © Illuminare Publications, [www.illuminairepublications.com](http://www.illuminairepublications.com)

POSTCOMMUNION (5:00PM & 8:30AM)

AVE REGINA CAELORUM (SIMPLE TONE)

LENTEN MARIAN ANTIPHON



*Hail, Queen of Heaven; Hail, Lady of the Angels; Hail, the root; Hail the gate; From which the Light dawned upon the world. Rejoice, O glorious Virgin, Lovely above all; Fare thee well, O most beautiful: And pray for us to Christ.*

POSTCOMMUNION (11:00AM)

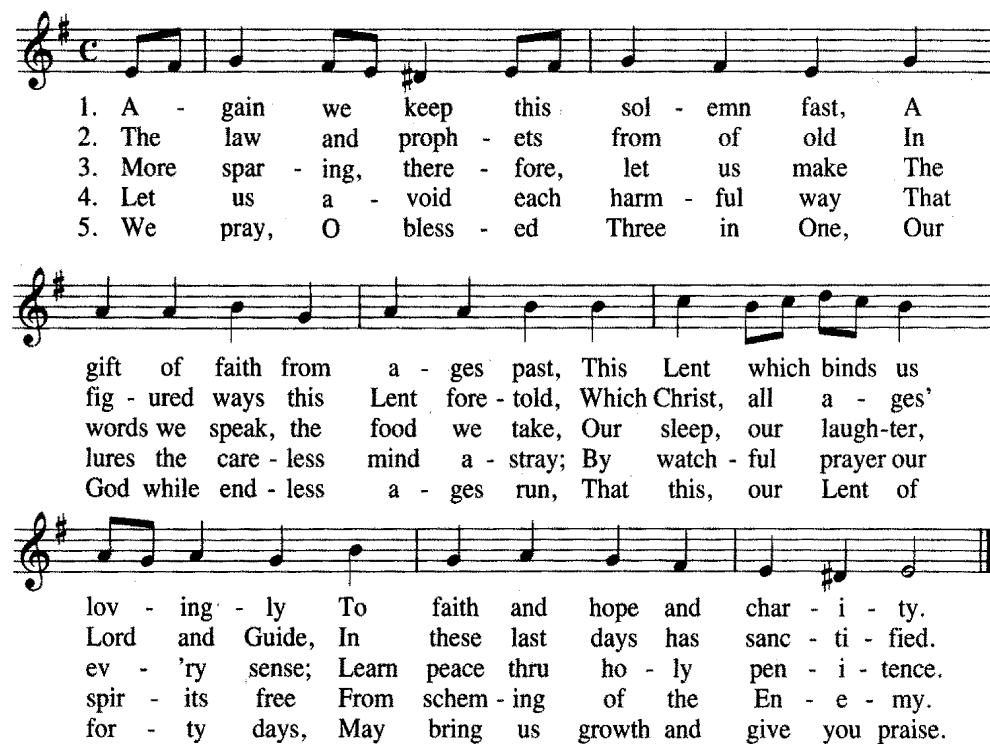
AVE REGINA CAELORUM (SOLEMN TONE)

LENTEN MARIAN ANTIPHON

CLOSING HYMN (ALL MASSES)

AGAIN WE KEEP THIS SOLEMN FAST

ERHALT UNS, HERR



VOLUNTARY

O LAMM GOTTES, UNSCHULDIG, BWV 656

J.S. BACH

### MUSIC NOTES

–The Mass ordinary at today's 11AM Mass is Palestrina's Missa Ave Regina Caelorum. *You may notice it is not based on the familiar Marian antiphon melody...because it predates it! It is based on the solemn tone version of the antiphon (sung as a postcommunion), as are many Renaissance polyphonic works.*

–While instrumental music is prohibited by the Church during Lenten Masses, this prohibition is relaxed for solemnities during the season and Laetare Sunday. Enjoy some of Bach's Lenten works!

–DID YOU KNOW...that you can donate to the Organ Fund electronically? Just use this link (<https://stpaulsbhm.churchgiving.com/organ>) and share with your friends! Every dollar...and cent...helps! Visit [www.stpaulsbhm.org/sacred-music/new-organ](http://www.stpaulsbhm.org/sacred-music/new-organ) for more information.

COPYRIGHTS

All music used with permission. Onelicense #A702187

## THE CATHEDRAL OF SAINT PAUL

BIRMINGHAM, ALABAMA

MOST REVEREND ROBERT J. BAKER, S.T.D., BISHOP

VERY REVEREND BRYAN W. JERABEK, J.C.L., PASTOR & RECTOR

THE FOURTH SUNDAY OF LENT

MARCH 31, 2019



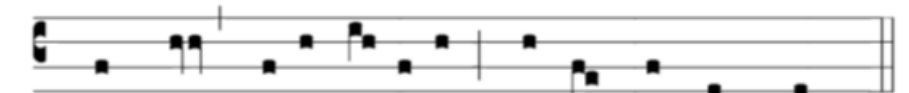
Welcome to the Cathedral. The order of Mass is in the first section of *Sunday's Word*, found in the pew rack, starting on page 3. The readings of the day are found starting on page 63.

PRELUDE

TRIO SUPER: *HERR JESU CHRIST, DICH ZU UNS WEND*, BWV 655 J.S. BACH

ENTRANCE ANTIPHON (5:00PM & 8:30AM) *Laetare Ierusalem* CF. IS 66:10-11

*Please join in the antiphon below after the cantor introduction and in between psalm verses.*



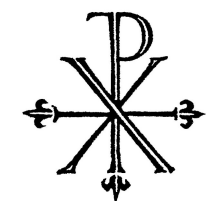
5. Re-joice, O Je-ru-sa-lem, all you who love her.

Music: Fr. Columba Kelly, OSB, © St. Meinrad Archabbey

ENTRANCE ANTIPHON (11:00AM) *Laetare Ierusalem* CF. ISAIAH 66:10-11

*Laetare Ierúsalem: et convéntum fácite, omnes qui dilígitis eam: gaudéte cum lætítia, qui in tristítia fuístis: ut exsultétis, et satiémini ab ubéribus conso-latiónis vestræ. ✠ Lætátus sum in his, quæ dicta sunt mihi: in domum Dómini íbimus.*

Rejoice, Jerusalem, and all who love her. Be joyful, all who were mourning; exult and be satisfied at her consoling breast. ✠ *I rejoiced when it was said unto me: let us go to the house of the Lord.*



KYRIE (11:00AM)

MISSA 'AVE REGINA CAELORUM' (PALESTRINA)

*Please repeat the Kyrie and Christe phrases after the cantor; then join in the final Kyrie.*

RESPONSORIAL PSALM (5:00PM &amp; 8:30AM) PSALM 23:1-3A, 3B-4, 5, 6

GRADUAL (11:00AM) *Laetatus sum* PSALM 122:1,7

Laetatus sum in his quae dicta sunt mihi: in domum Domini ibimus.

✠ *Fiat pax in virtute tua: et abundantia in turribus tuis.*

I rejoiced when they said unto me: “Let us go to the house of the Lord”!

✧ Let peace reign within your walls, and abundance in your towers.

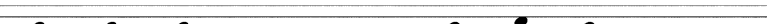
*\*A note about the Gradual: while the usual practice at St. Paul is to sing the Responsorial Psalm, occasionally, the chant repertoire offers a particularly beautiful example of the Gradual. It, like the Responsorial Psalm, is designed as a meditation upon the readings of the day. It also remains the Church's "first option" for the chant between the two readings.*

II  
G Lo-ry to you, O Word of God, Lord Je- sus Christ.

Lord, you are truly the Savior of the world; give me living water, that I may never thirst again.


Music: Fr. Columba Kelly, OSB, © St. Meinrad Archabbey

HEAR US, ALMIGHTY LORD



Christ our Re - deem - er,      hear the prayers we of - fer,  
Source of our glad - ness,      gate - way to the King - dom,  
Gra - cious - ly lis - ten,      hear our cries of an - guish.  
Strip - ped of illus - ions,      nak - ed in our sor - row,  
Sen - tenced by sin - ners,      when they brought false wit - ness.

D.C.



Spare us and save us, com - fort us in sor - row.  
Free us in mer - cy from the sins that bind us.  
Touch us and heal us where our sins have wound - ed.  
Par - don, Lord Je - sus, those your blood has ran - somed.  
Keep from dam - na - tion those your death has res - cued.

Laudáte Dóminum, quia benígnus est: psállite nómini eius, quóniam suávis  
est: ómnia, quaecúmque vóluit, fecit in caelo et in terra.

*Praise the Lord, for he is good: Sing a psalm to his name, for he is delightful: The Lord does whatever he wills, in heaven and on earth.*



2

MYSTERIUM FIDEI

We pro-claim your Death, O Lord, and pro-fess your Res-ur-rec-tion

un-til you come— a-gain.



Lamb of God, you take a - way the sins of the

world, have mer-cy on us. Lamb of God, you take a - way the

sins of the world, have mer - cy on us. Lamb of God, you

take a - way the sins of the world, grant us peace.