

THE CATHEDRAL OF SAINT PAUL

BIRMINGHAM, ALABAMA

MOST REVEREND STEVEN J. RAICA, BISHOP

VERY REVEREND BRYAN W. JERABEK, PASTOR & RECTOR

THE HOLY FAMILY OF JESUS, MARY, AND JOSEPH

DECEMBER 26, 2021



Welcome to the Cathedral of Saint Paul. The order of Mass can be found on page 3 in the Sunday's Word booklets.

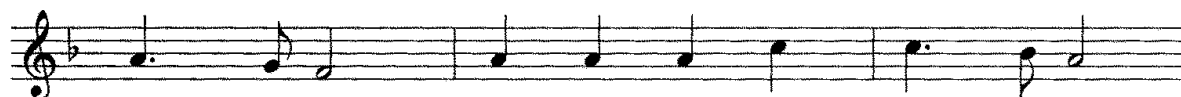
ENTRANCE HYMN

ANGELS WE HAVE HEARD ON HIGH

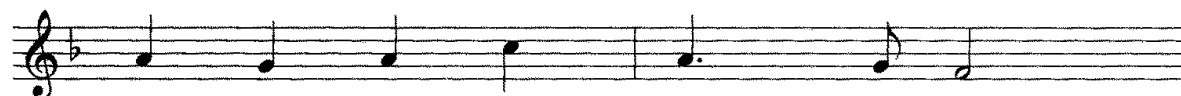
GLORIA



1. An - gels we have heard on high Sweet - ly sing - ing
2. Shep - herds, why this ju - bi - lee? Why your joy - ous
3. Come to Beth - le - hem and see Him whose birth the
4. See him in a man - ger laid, Whom the choirs of



o'er the plains, And the moun - tains in re - ply
strains pro - long? Say what may the tid - ings be,
an - gels sing; Come a - dore, on bend - ed knee,
an - gels praise; Mar - y, Jo - seph, lend your aid,



Ech - o back their joy - ous strains.
Which in - spire your heav'n - ly song.
Christ, the Lord, the new - born King.
While our hearts in love we raise.



Glo - ri - a



in ex - cel - sis De - o, Glo -



- ri - a in ex - cel - sis De - o.

Deus in loco sancto suo: Deus qui inhabitare fecit unanimes in domo: ipse dabit virtutem, et fortitudinem plebi suae. / *God is in his holy place, God who unites those who dwell in his house. He himself gives might and strength to his people.*

KYRIE

MASS VIII

VIII

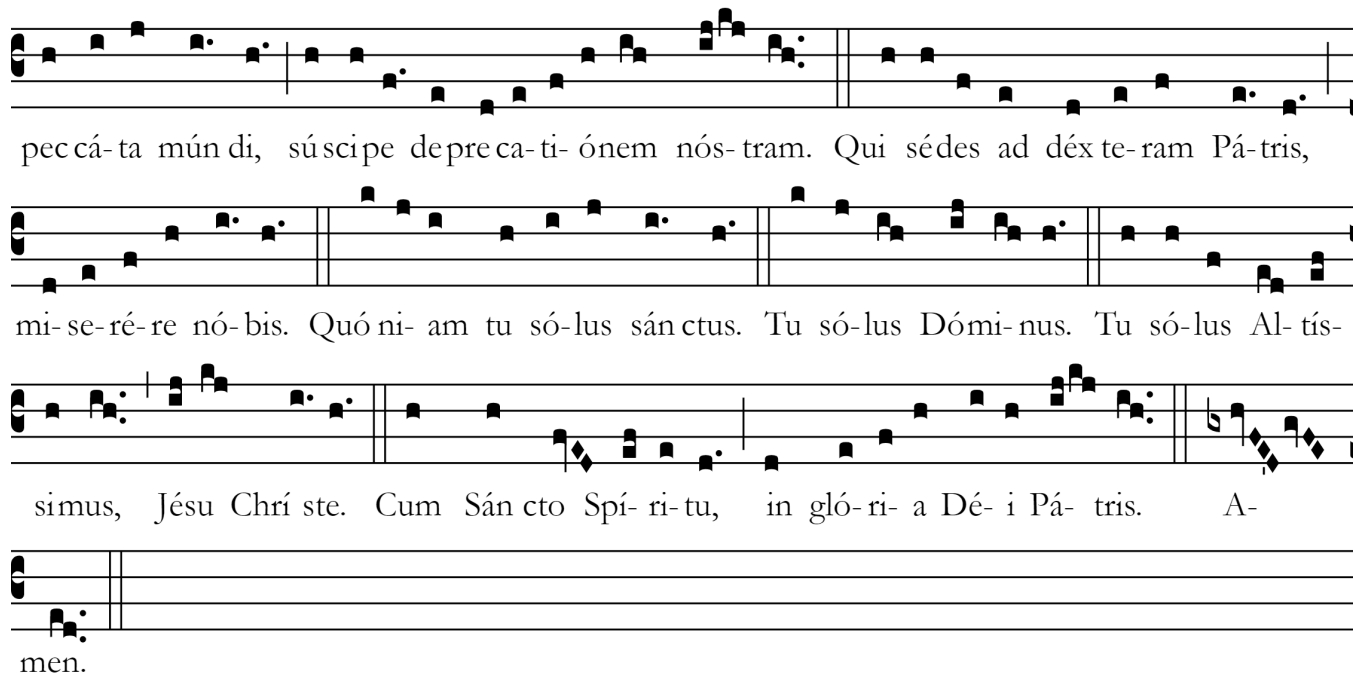
K Y- ri- e e- lé- i-son. *ij.* Chri ste e-
 lé- i-son. *ij.* Ký-ri- e e- lé- i-son. Ký-ri- e
 e- lé- i-son.

GLORIA

MASS VIII

V

G Ló-ri- a in excélsis Dé- o. Et in térra pax homí-nibus bónae vo-lun tá- tis.
 Laudá-mus te. Benedí-cimus te. A do-rá-mus te. Glo-ri- fí-cá-mus te. Grá- ti- as á-gi-
 mus tí-bi prop-ter má-gnam gló-ri- am tú- am. Dó-mine Dé- us, Rex caeléstis, Dé- us Pá-
 ter omní- po- tens. Dó-mine Fí-li uni-géni- te Jé-su Chrís te. Dó-mine Dé- us, Agnus
 Dé- i, Fí-li- us Pá- tris. Qui tóllis peccá- ta mún- di, mi-se-ré- re nó-bis. Qui tóllis



pec-cá-ta mún-di, sú-sci-pe de-pre-ca-ti-ónem nós-tram. Qui sé-des ad déx-te-ra-m Pá-tris,
 mi-se-ré-re nó-bis. Quó-ni-am tu só-lus sán-ctus. Tu só-lus Dó-mi-nus. Tu só-lus Al-tís-
 simus, Jé-su Chrí-ste. Cum Sán-cto Spí-ri-tu, in gló-ri-a Dé-i Pá-tris. A-
 men.

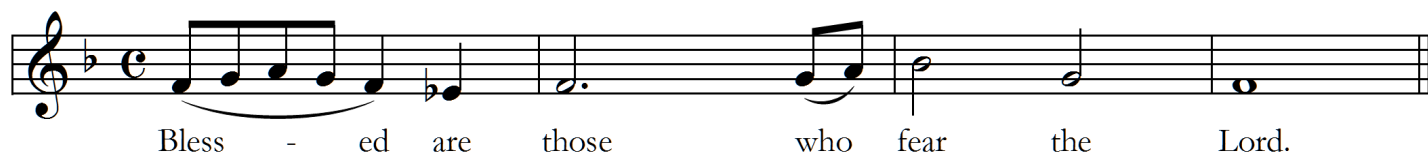
THE LITURGY OF THE WORD

FIRST READING

SIRACH 3:2-6, 12-14

RESPONSORIAL PSALM

PSALM 128:1-2,3,4-5



Bless - ed are those who fear the Lord.

SECOND READING

COLOSSIANS 3:12-21

ALLELUIA



Cantor, then all:
 Al - le - lu - ia, al - le - lu - ia, al - le - lu - ia.

Let the peace of Christ control your hearts; let the word of Christ dwell in you richly.

GOSPEL

LUKE 2:41-52

LITURGY OF THE EUCHARIST

OFFERTORY

WHAT CHILD IS THIS?

GREENSLEEVES

1. What child is this, who, laid to rest, On
2. Why lies he in such mean es - tate Where
3. So bring him in - cense, gold, and myrrh, Come,

Mar - y's lap is sleep - ing? Whom an - gels greet with
ox and ass are feed - ing? Good Chris - tian, fear; for
peas - ant, king to own him; The King of kings sal -

an - thems sweet, While shep - herds watch are keep - ing?
sin - ners here The si - lent Word is plead - ing.
va - tion brings, Let lov - ing hearts en - throne him.

This, this is Christ the King, Whom shep-herds guard and an-gels sing;

Haste, haste to bring him laud, The babe, the son of Mar - y.

OFFERTORY ANTIPHON *In te speravi*

PSALM 31:15-16

In te sperávi, Dómine; dixi: Tu es Deus meus, in mánibus tuis témpora mea.

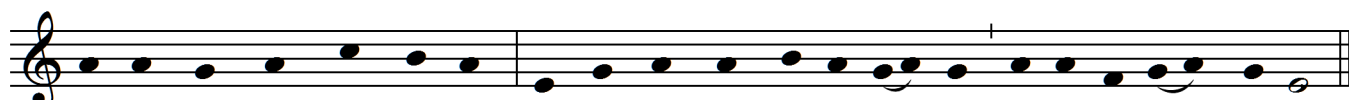
My trust is in You, O Lord; I say, You are my God. In Your hands is my destiny



VI

S An- ctus, * San ctus, San- ctus Dó- mi- nus De- us Sá-
 ba- oth. Pleni sunt cæ- li et ter- ra gló- ri- a tu- a. Ho- sán- na in excél-
 sis. Bene- dí- ctus qui ve- nit in nómine Dó- mi- ni. Ho- sán- na in
 ex cél- sis.

MYSTERIUM FIDEI



We pro-claim your Death, O Lord, and pro-fess your Res-ur- rec - tion un-til you come a-gain.

AMEN (8:30AM)



A - men, a - men, a - men.

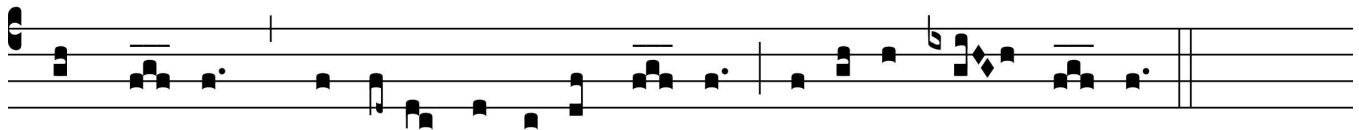
AGNUS DEI

MASS VIII

VI

A - gnus De- i, * qui tollis peccá- ta mun- di : mi- se- ré- re no- bis.

Agnus De- i, * qui tol- lis peccá- ta mun- di : mi- se- ré- re no- bis. A-



gnus De- i, * qui tollis pec- cá- ta mun- di: do- na no- bis pa - cem

HOLY COMMUNION

We invite all Catholics who are properly disposed (i.e., in the state of grace and having fasted for one hour before communion) to come forward in the usual way to receive Holy Communion.

All others, including our non-Catholic guests, may remain in their pews and join us in prayer. Alternatively, to participate in the communion procession and receive a blessing, come forward in the line and cross your arms over your chest as you approach the minister. Thank you.

COMMUNION

AWAY IN A MANGER

CRADLE SONG



1 A - way in a man - ger, no crib for his bed,
2 The cat - tle are low - ing; the poor ba - by wakes,
3 Be near me, Lord Je - sus; I ask thee to stay



the lit - tle Lord Je - sus laid down his sweet head.
but lit - tle Lord Je - sus, no cry - ing he makes.
close by me for - ev - er and love me, I pray.



The stars in the bright sky looked down where he lay,
I love thee, Lord Je - sus; look down from the sky,
Bless all the dear chil - dren in thy ten - der care,



the lit - tle Lord Je - sus a - sleep on the hay.
and stay by my side un - til morn - ing is nigh.
and fit us for heav - en to live with thee there.

POSTCOMMUNION (11:00AM)

WHAT IS THIS LOVELY FRAGRANCE?

TRAD. FRENCH/ARR. HEALEY WILLAN

What is this lovely fragrance wafting like to the scents of flowers in spring! Shepherds, O tell us, whence such beauty, Hear you not heavenly caroling? What is this lovely fragrance... What is this light so fair, so tender, Breaking upon our wondering eyes? Never the Morning Star so radiant Followed his course over eastern skies. What is this light... Shepherds, O haste with eager footsteps Seek the Savior, born today. Low at his feet we lay our treasure, Heart's adoration, love for aye. Shepherds, o haste...

CLOSING

ANGELS FROM THE REALMS OF GLORY

REGENT SQUARE



1. An - gels, from the realms of glo - ry, Wing your flight o'er all the earth;
2. Shep - herds, in the fields a - bid - ing, Watch - ing o'er your flocks by night,
3. Sag - es, leave your con - tem - pla - tions, Bright - er vi - sions beam a - far;
4. Though an in - fant now we view him, He shall fill his heav'n - ly throne,



You who sang cre - a - tion's sto - ry, Now pro - claim Mes - si - ah's birth:
God on earth is now re - sid - ing, Yon - der shines the in - fant light:
Seek the great De - sire of na - tions, You have seen his morn - ing star:
Ga - ther all the na - tions to him; Ev - ery knee shall then bow down:



Come and wor - ship, come and wor - ship, Wor - ship Christ, the new - born King.

VOLUNTARY

QUAND JESUS NAQUIT À NOEL

CLAUDE BALBASTRE



COPYRIGHTS

Responsorial Psalm: Bruce Ludwick, Jr., 2009. All Antiphons sung to the authentic Gregorian settings from the *Graduale Romanum*. All music used with permission. Onelicense #A702187

PLEASE "SAVE THE DATE" FOR THE DEDICATORY RECITAL OF THE ANNA CATHARINE GRACE MEMORIAL PIPE ORGAN, NOACK ORGAN COMPANY OPUS 164.

WE WILL WELCOME INTERNATIONALLY-RENOWNED CONCERT ORGANIST

NATHAN LAUBE

ON

SUNDAY, JANUARY 9, 2022, AT 4:00PM

IN A FESTIVE CELEBRATION OF THIS MONUMENTAL INSTRUMENT.

FREE ADMISSION; RECEPTION TO FOLLOW.



THE CATHEDRAL OF SAINT PAUL

2120 3RD AVENUE NORTH

BIRMINGHAM, ALABAMA 35203

WWW.STPAULSBHM.ORG 205.251.1279

THE MOST REVEREND STEVEN J. RAICA, JCD

BISHOP OF BIRMINGHAM IN ALABAMA

THE VERY REVEREND BRYAN W. JERABEK, JCL, RECTOR

LITURGICAL SCHEDULE

SUNDAY MASSES

SATURDAY 5:00PM (ANTICIPATED), SUNDAY 7:15, 8:30, & 11:00AM

WEEKDAY MASSES

MONDAY-FRIDAY, 12:10PM

CONFESSIONS

MONDAY-FRIDAY, 11:30AM-12:00PM; SATURDAY, 3:00-4:30PM OR BY APPOINTMENT