

THE CATHEDRAL OF SAINT PAUL

BIRMINGHAM, ALABAMA

MOST REVEREND STEVEN J. RAICA, BISHOP

VERY REVEREND BRYAN W. JERABEK, PASTOR & RECTOR

THE SIXTH SUNDAY IN ORDINARY TIME

FEBRUARY 13, 2022



Welcome to the Cathedral of Saint Paul. The order of Mass can be found on page 3 in the Sunday's Word booklets found in the pew racks.

ENTRANCE HYMN

TAKE UP YOUR CROSS

BOURBON

1 Take up your cross, the Sa - vior said, if
2 Take up your cross, let not its weight fill
3 Take up your cross, heed not the shame, and
4 Take up your cross, then, in his strength, and
5 Take up your cross, and fol - low Christ, nor

1 you would my dis - ci - ple be; take up your cross with
2 your weak spi - rit with a - larm; his strength shall bear your
3 let your fool - ish heart be still; the Lord for you ac -
4 calm - ly ev - ery dan - ger brave: it guides you to a -
5 think till death to lay it down; for on - ly those who

1 will - ing heart, and hum - bly fol - low af - ter me.
2 spi - rit up, and brace your heart, and nerve your arm.
3 cept - ed death up - on a cross, on Cal - vary's hill.
4 bun - dant life and leads to vic - tory o'er the grave.
5 bear the cross may hope to wear the glo - rious crown.

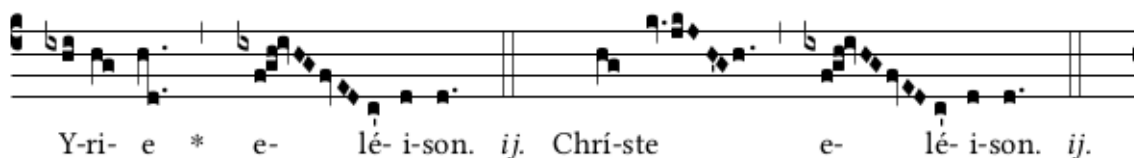
ENTRANCE ANTIPHON (11:00AM) *Esto mihi in Deum*

CF. PSALM 31:3-4

Esto mihi in Deum protectorem, et in locum refugii, ut salvum me facias: quoniam firmamentum meum et refugium meum es tu: et propter nomen tuum dux mihi eris, et enutries me.

Be my protector, O God, a mighty stronghold to save me. For You are my rock, my stronghold! Lead me, guide me, for the sake of Your name.

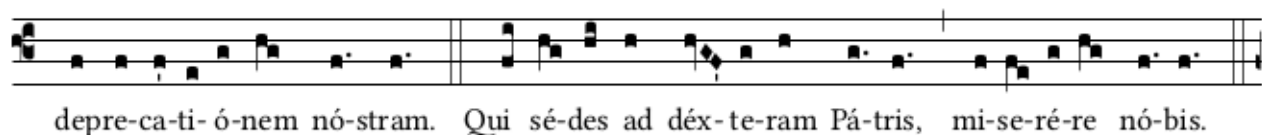
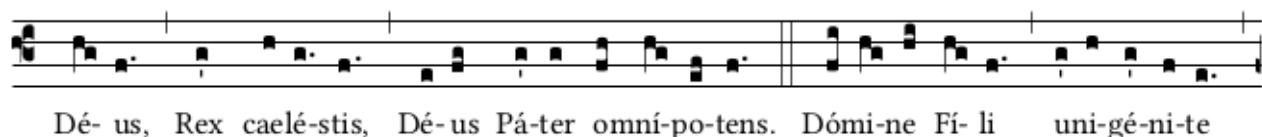
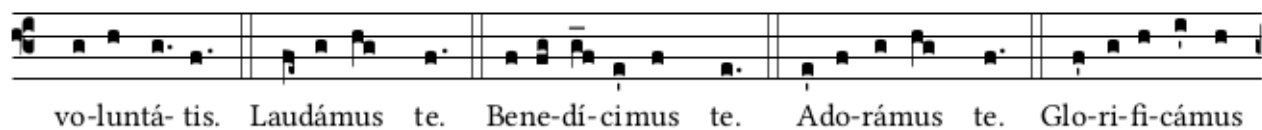
K

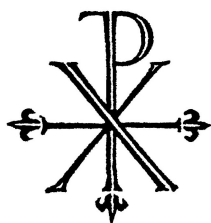


GLORIA

MASS XI

G

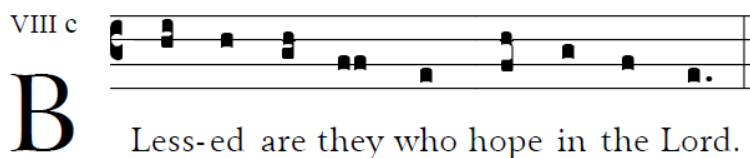




THE LITURGY OF THE WORD

RESPONSORIAL PSALM (5:00PM & 8:30AM)

PSALM 1



GRADUAL (11:00AM) *Tu es Deus*

PSALM 77:15, 16

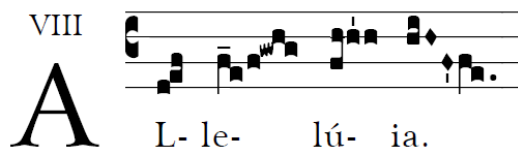
Tu es Deus, qui facis mirabilia solus: notam fecisti in gentibus virtutem tuam.

℟. Liberasti in brachio tuo populum tuum, filios Israel et Ioseph.

You alone are the God who works wonders; You manifested Your strength among the nations.

℟. With Your arm You delivered Your people, the sons of Israel and Joseph.

ALLELUIA (5:00PM & 8:30AM)



Rejoice and be glad; your reward will be great in heaven.

ALLELUIA (11:00AM) *Cantate Domino*

PSALM 98:1

Alleluia, alleluia. ℟. Cantate Domino canticum novum: quia mirabilia fecit Dominus.

Alleluia, alleluia. ℟. Sing to the Lord a new song; for the Lord has accomplished wondrous deeds.

LITURGY OF THE EUCHARIST

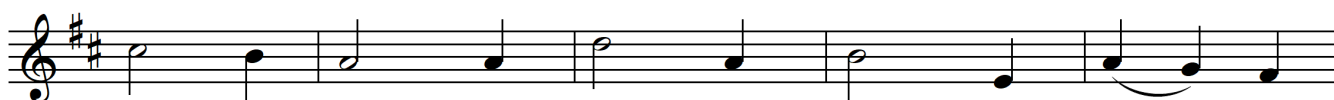
OFFERTORY

O CENTER OF ALL LIFE AND LOVE

NEWMAN



1. O cen - ter of all life and love, Our Euch - a -
2. And we are brought in peace as one, Like branch - es
3. The Lord, though rich, has be - come poor, To lift___ us
4. O Sac - ra - ment in which we live, Our gain,___ all
5. Stay with us when the night is near, The end___ of
6. O Fa - ther, Son, and Spi - rit blest, We praise You,



ris - tic Lord, Most pre - cious Gift from heav'n a -
on one vine As we con - fess one Lord___ a -
to the skies. Our sins u - pon the Cross He
else but loss, Teach us to hon - or, love,___ for -
earth - ly day. Re - move our doubt, re - pel___ our
Tri - ni - ty, Our gra - cious Host, our sav - ing



bove, Your Flesh___ and Blood out - poured.
lone: The Son___ of God di - vine.
bore, That we___ with Him might rise.
give, And bear___ each oth - er's cross.
fear, And lead___ us on our way.
Guest, Our life,___ our u - ni - ty.



OFFERTORY ANTIPHON (11:00AM) *Benedictus es Domine*

PSALM 119:12,13

Benedictus es, Domine, doce me iustificationes tuas: in labiis meis pronuntiavi omnia iudicia oris tui.

Blessed are You, O Lord, teach me Your commandments. With my lips have I declared all the judgments spoken by Your mouth.

—Polyphonic setting by Orlando di Lasso

S Anctus, * Sánc-tus, Sánc-tus Dó-minus Dé-us Sá-ba-oth.

Plé-ni sunt caé-li et tér-ra gló-ri-a tú-a. Ho-sánna in

ex-célsis. Bene-díctus qui vé-nit in nó-mi-ne Dó-mi-ni.

Ho-sánna in ex-célsis.

MYSTERIUM FIDEI

We pro-claim your Death, O Lord, and pro-fess your Res-ur-rec-tion un-til you come a-gain.

AMEN (8:30AM)

A - men, a - men, a - men.

AGNUS DEI

A - gnus Dé-i, * qui tól-lis peccá-ta mún-di: mi-se-ré-re

nó-bis. Agnus Dé-i, * qui tól-lis peccá-ta mún-di: mi-se-ré-re

nó-bis. Agnus Dé-i, * qui tól-lis pec-cá-ta mún-di: dó-na nó-bis

pá-cem.

HOLY COMMUNION

We invite all Catholics who are properly disposed (i.e., in the state of grace and having fasted for one hour before communion) to come forward in the usual way to receive Holy Communion.

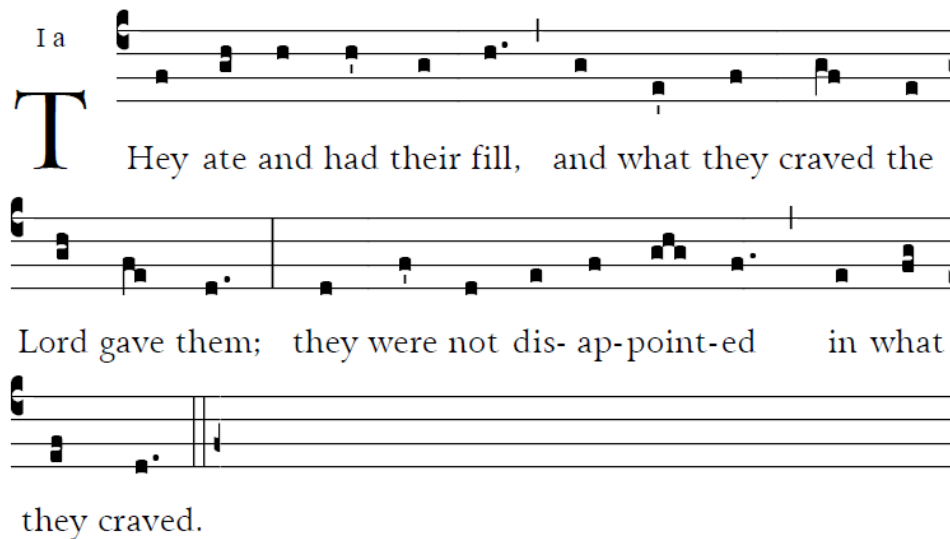
All others, including our non-Catholic guests, may remain in their pews and join us in prayer. Alternatively, to participate in the communion procession and receive a blessing, come forward in the line and cross your arms over your chest as you approach the minister. Thank you.

COMMUNION ANTIPHON (ALL MASSES) *Manducaverunt*

PSALM 78:29-30

Please join in singing the refrain below after the cantor introduction.

I a



Hey ate and had their fill, and what they craved the
Lord gave them; they were not dis- ap- point- ed in what
they craved.

POSTCOMMUNION (11:00AM)

IF WE BELIEVE

JOHN GOSS

If we believe that Jesus died and rose again, even so them also which sleep in Jesus will God bring with Him.

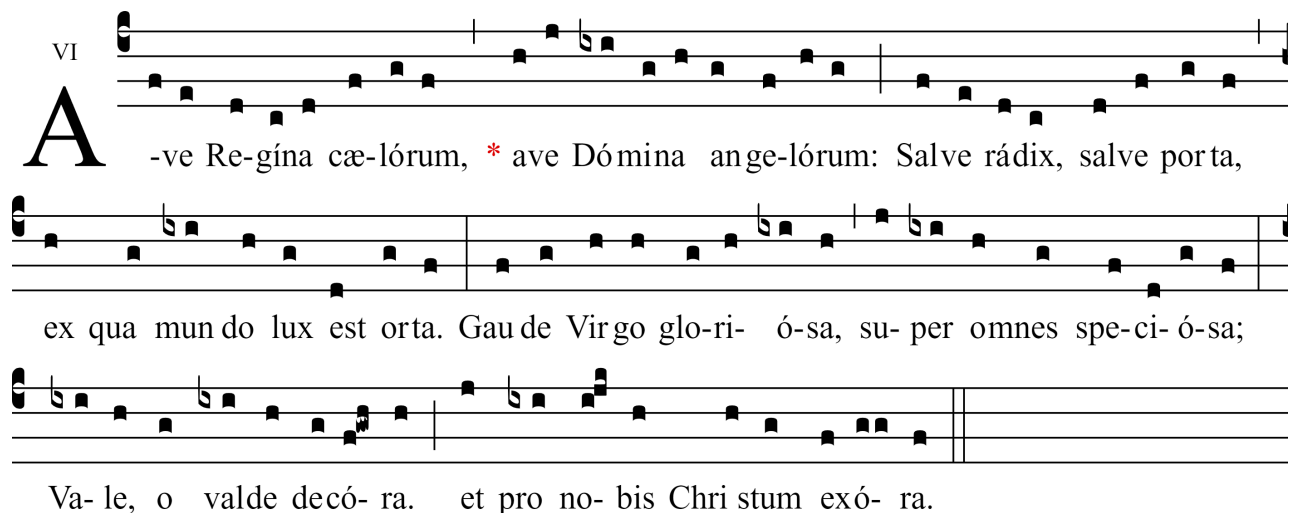
Wherefore comfort one another with these words.

—1 Thessalonians 4:14,18

POSTCOMMUNION (5:00PM & 11:00AM), CLOSING (8:30AM)

AVE REGINA CAELORUM (SIMPLE TONE)

VI



-ve Re-gína cæ-lórum, * ave Dómina ange-lórum: Salve rádix, salve porta,
ex qua mun do lux est orta. Gau de Virgo glo-ri- ó-sa, su- per omnes spe-ci- ó-sa;
Va- le, o valde decó- ra. et pro no- bis Chri stum exó- ra.

CLOSING (5:00PM & 11:00AM)

COME, THOU FOUNT OF EV'RY BLESSING

NETTLETON



1. Come, thou fount of ev' - ry bless - ing, tune my heart to sing thy grace! Streams of
2. Here I find my great - est trea - sure; hith - er by thy help, I've come; and I
3. O, to grace how great a debt - or dai - ly I'm con - strained to be! Let thy



mer - cy nev - er ceas - ing, call for songs of loud - est praise. Teach me some mel - o - dious
hope, by thy good plea - sure, safe - ly to ar - rive at home. Je - sus sought me when a
good - ness, like a fet - ter, bind my wand' - ring heart to Thee; prone to wan - der, Lord, I



son - net, sung by flam - ing tongues a - bove. Praise the mount! O fix me on it, mount of
stran - ger, wand' - ring from the fold of God; he, to res - cue me from dan - ger, in - ter -
feel it, prone to leave the God I love; here's my heart, O, take and seal it, seal it



God's un - chang - ing love.
posed his Pre - cious Blood.
for Thy courts a - bove.

VOLUNTARY

PRAELUDIUM IN C

GEORGE BÖHM

MUSIC REMINDERS

If you enjoy singing and can read music, ***please consider joining Cathedral Choir***, which leads singing at the 11:00am Mass and holy days throughout the year. A thorough description of the ensemble can be found at www.stpaulsbhm.org/sacred-music. Please contact the Director of Music, Bruce Ludwick, Jr., for more information! You will love being a part of this hard-working, yet fun, choir. There is a particular need for altos and sopranos! Ladies, we need your participation!

COPYRIGHTS

Responsorial Psalm & Communion Antiphon: Richard Rice, used under Creative Commons 3.0 permissions. All music used with permission. Onelicense #A702187

ABOUT TODAY'S MUSIC

Today's entrance hymn uses a well-known text set to a Southern Harmony tune. These pentatonic tunes are easy to sing and internalize, forming an ideal basis for deploying a hymn text. It leads well into the Gregorian entrance antiphon of the day, a strong declaration of Faith in the God's protection. Likewise, the Gregorian Alleluia of the day is one of the most exciting and melodious in the repertoire. It is one of the most celebratory Mode I chants in the repertoire, which makes perfect sense considering its text. Composers have often set settings of the Mass propers to polyphony, and today's offertory antiphon is no exception. Lassus' short setting is attractive and clear in its text setting—an obvious response to the directives of the Council of Trent to make liturgical texts clear to the listener. Today's anthem at the 11AM Mass is John Goss's setting of a portion of today's Second Reading. Goss's work is an important contribution to 19th Century English-language liturgical choral repertoire, and a number of his Anglican chants are in regular use to this day. "If we believe" is unique and beautiful in a number of ways, not least of which is its sensitive setting of the biblical text. It is an ideal example of how to set a short text of great import: each voice has an imitative entry (in the style of Bach and earlier music) that eventually ends in more typical Romantic gestures. After these pauses, the imitation resumes in a more subtle way. The piece concludes with a brief coda setting the words of v. 18 of the passage. Clearly, this particular piece (and its text) was important to the composer: it serves as the inscription on his tomb at St. Paul's Cathedral in London. The postlude, by Böhm, is a brilliant example of the North German organ *praeludia* that inspired a young J.S. Bach to walk all the way to Hamburg as a youth. It has even more of the *stylus fantasticus* flourish at the beginning than Buxtehude or other contemporaries' work used, which is followed by the repeated-note fugue theme typical of this genre. In many ways, the clearer distinction of free episodes from fugue in this piece foreshadows the free works of Bach that brought the genre to its apogee.



THE CATHEDRAL OF SAINT PAUL

2120 3RD AVENUE NORTH

BIRMINGHAM, ALABAMA 35203

WWW.STPAULSBHM.ORG 205.251.1279

THE MOST REVEREND STEVEN J. RAICA, JCD

BISHOP OF BIRMINGHAM IN ALABAMA

THE VERY REVEREND BRYAN W. JERABEK, JCL, RECTOR