

# THE CATHEDRAL OF SAINT PAUL

BIRMINGHAM, ALABAMA

MOST REVEREND STEVEN J. RAICA, BISHOP

VERY REVEREND BRYAN W. JERABEK, PASTOR & RECTOR

## THE SEVENTEENTH SUNDAY IN ORDINARY TIME

JULY 24, 2022



Welcome to the Cathedral of Saint Paul. The order of Mass can be found on page 3 in the Sunday's Word booklets found in the pew racks.

### PRELUDE

"BERCEUSE" FROM 24 PIÈCES EN STYLE LIBRE

LOUIS VIERNE

### ENTRANCE HYMN (5:00PM & 8:30AM)

GOD IS MY GREAT DESIRE

LEONI

1. God is my great de - sire, His face I seek the first;  
2. God is my true de - light, My rich - est feast his praise,  
3. God is my strong de - fense In ev - 'ry e - vil hour;

To him my heart and soul as - pire, For him I thirst.  
Through si - lent watch - es of the night, Through all my days.  
In him I face with con - fi - dence The temp - ter's power.

As one in des - ert lands, Whose ver - y flesh is flame,  
To him my spir - it clings, On him my soul is cast;  
I trust his mer - cy sure, With truth and tri - umph crowned:

In burn - ing love I lift my hands And bless his name.  
Be - neath the shad - ow of his wings He holds me fast.  
My hope and joy for ev - er - more In him are found.

### ENTRANCE ANTIPHON (8:30 & 11:00AM) *Deus in loco*

CF. PSALM 68:6-7

Please join in the antiphon below after the cantor intonation.

**G**OD is in his ho - ly place, God who u - nites  
those who dwell in his house.

**K** Y-ri- e \* e- lé- i-son. *ij.* Chrí-ste e- lé- i-son. *ij.*

Ký-ri- e e- lé- i-son. Ký- ri- e \* e- lé- i-son.



## GLORIA

## MASS XI «ORBIS FACTOR»

**G** Lóri- a in excélsis Dé- o. Et in térra pax homí-ni-bus bó-nae

vo-luntá- tis. Laudá-mus te. Bene-dí-cimus te. Ado-rá-mus te. Glo-ri-fi-cá-mus

te. Grá-ti- as á-gimus tí-bi propter má-gnam gló-ri- am tú- am. Dó-mi-ne

Dé- us, Rex caelé-stis, Dé- us Pá-ter omní-po-tens. Dó-mi-ne Fí- li uni-gé-ni-te

Jé-su Chrí-ste. Dó-mi-ne Dé- us, Agnus Dé- i, Fí- li- us Pá-tris. Qui tól-lis

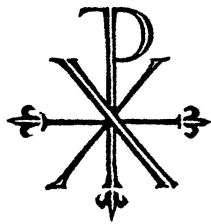
peccá-ta mún-di, mi-se-ré-re nó-bis. Qui tól-lis peccá-ta mún-di, sú-sci-pe



depre-ca-ti-ó-nem nó-stram. Qui sé-des ad délix-te-ram Pá-tris, mi-se-ré-re nó-bis.

Quó-ni-am tu só-lus sánctus. Tu só-lus Dóminus. Tu só-lus Altíssimus, Jé-su

Chrí-ste. Cum Sáncto Spí-ri-tu, in gló-ri-a Dé-i Pá-tris. A-men.



## THE LITURGY OF THE WORD

### RESPONSORIAL PSALM

PSALM 138:1-2, 2-3, 6-7, 7-8



Lord, on the day I called for help, you an - swered me.

### ALLELUIA

*Cantor, then all:*



Al - le - lu - ia, al - le - lu - ia, al - le - lu - ia.

You have received a Spirit of adoption, through which we cry, Abba, Father.

# LITURGY OF THE EUCHARIST

## OFFERTORY

DEAR LORD AND FATHER OF MANKIND

REPTON



1. Dear Lord and Fa - ther of man - kind, for - give our fool - ish ways! Re -
2. In sim - ple trust like theirs who heard, be - side the Syr - ian sea, the
3. O Sab - bath rest by Gal - i - lee! O calm of hills a - bove, where
4. Drop thy still dew of\_ qui - et - ness, till all our striv - ings cease; take
5. Breathe through the heats of\_ our de - sire thy cool - ness and thy balm; let



clothe us in our right - ful mind, in pur - er lives thy  
gra - cious call - ing of the Lord, let us, like them, with -  
Je - sus knelt to share with Thee the si - lence of e -  
from our souls the strain and stress, and let our or - dered  
sense be dumb, let flesh re - tire; speak through the earth - quake,



ser - vice find, in deep - er rev - erence, praise, in deep - er rev - erence, praise.  
out a\_ word, rise up and fol - low thee, rise up and fol - low thee.  
ter - ni - ty in - ter - pret - ed by\_ love! in - ter - pret - ed by love!  
lives con - fess the beau - ty of thy peace, the beau - ty of thy peace.  
wind, and fire, O still, small voice of\_ calm, O still, small voice of calm.



## SANCTUS

MASS XI «ORBIS FACTOR»

S



Anctus, \* Sánc-tus, Sánctus Dó-minus Dé-us Sá-ba-oth.



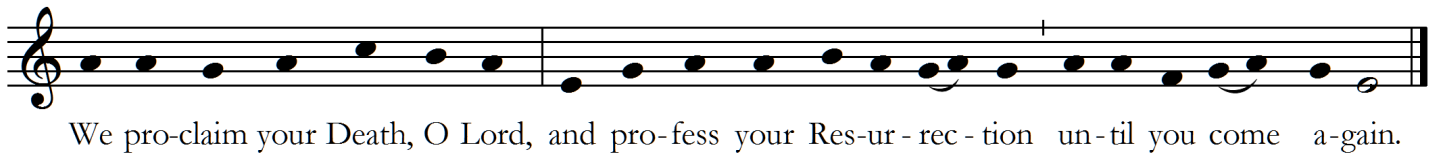
Plé-ni sunt caé-li et tér-ra gló-ri-a tú-a. Ho-sánna in



ex- célsis. Bene-díctus qui vé-nit in nó-mi-ne Dó-mi-ni.

Ho-sánna in ex- célsis.

# MYSTERIUM FIDEI



We pro-claim your Death, O Lord, and pro-fess your Res-ur-rec-tion un-til you come a-gain.

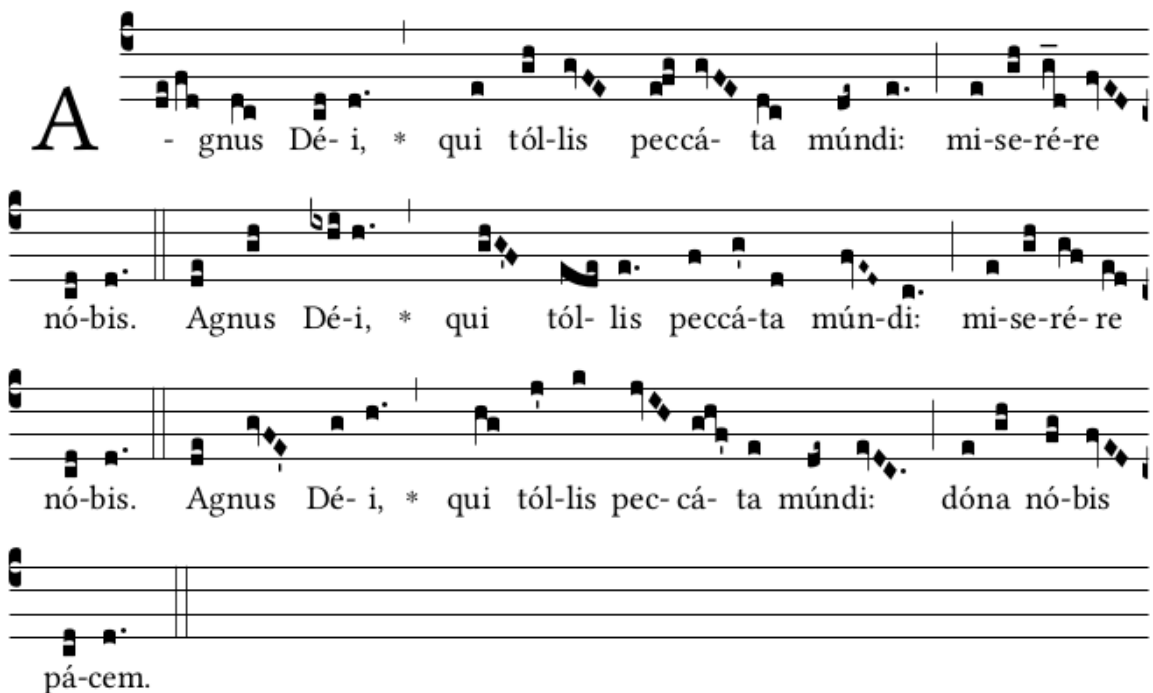
# AMEN (11:00AM)



A - men, a - men, a - men, a - men.

# AGNUS DEI

# MASS XI «ORBIS FACTOR»



**A** - gnus Dé-i, \* qui tól-lis peccá-ta mún-di: mi-se-ré-re

nó-bis. Agnus Dé-i, \* qui tól-lis peccá-ta mún-di: mi-se-ré-re

nó-bis. Agnus Dé-i, \* qui tól-lis pec-cá-ta mún-di: dóna nó-bis

pá-cem.

## HOLY COMMUNION

We invite all Catholics who are properly disposed (i.e., in the state of grace and having fasted for one hour before communion) to come forward in the usual way to receive Holy Communion.

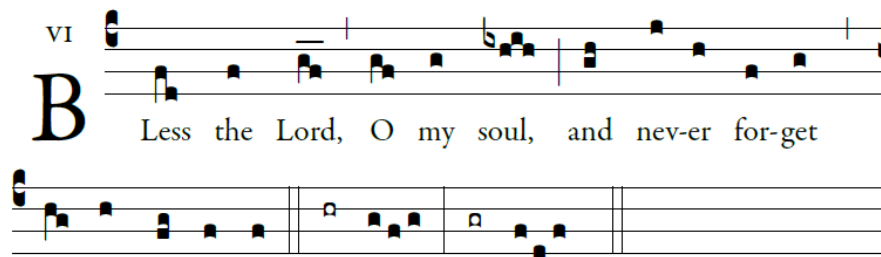
All others, including our non-Catholic guests, may remain in their pews and join us in prayer. Alternatively, to participate in the communion procession and receive a blessing, come forward in the line and cross your arms over your chest as you approach the minister. Thank you.

COMMUNION ANTIPHON (ALL MASSES) *Benedic, anima mea*

CF. PSALM 103:1

*Please join in singing the refrain below after the cantor introduction and between psalm verses.*

VI



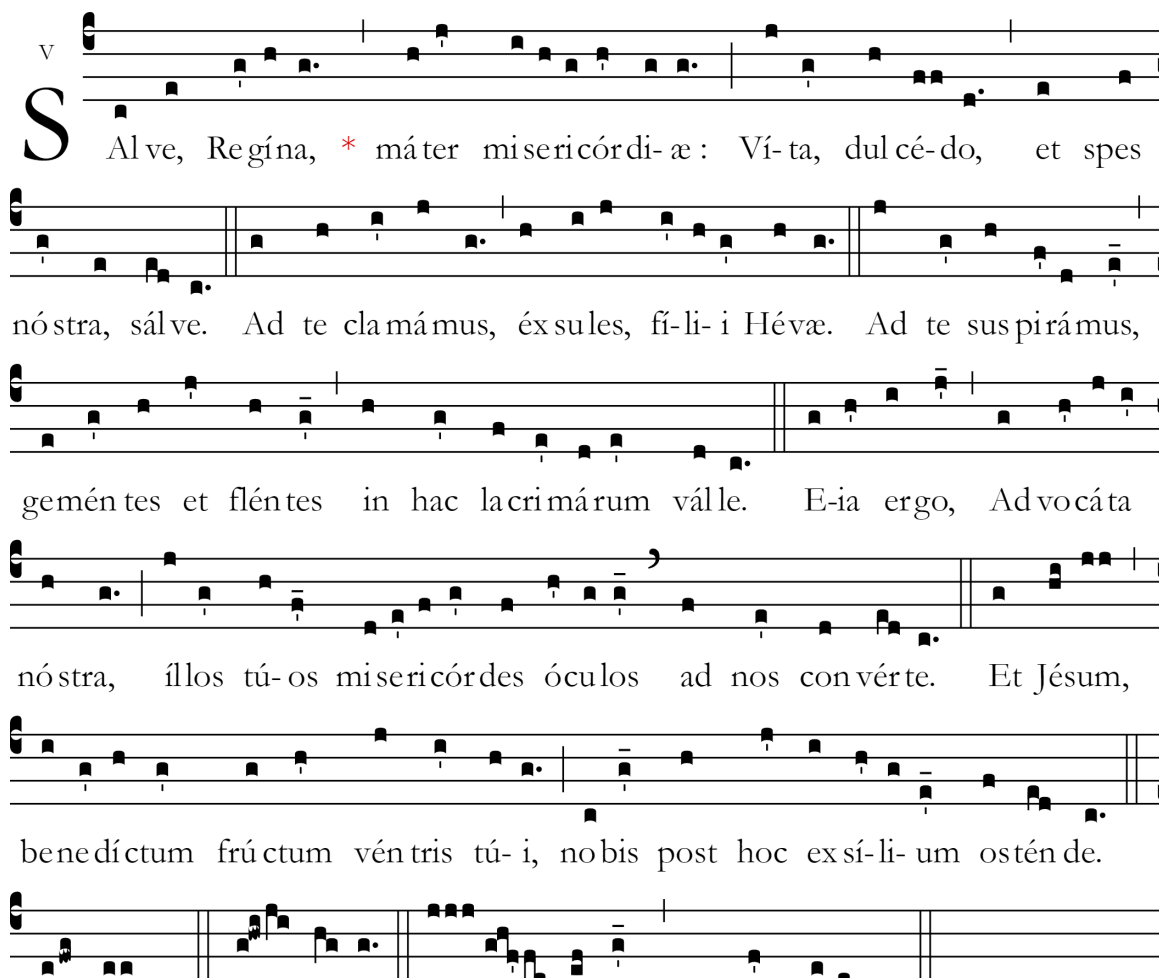
B Less the Lord, O my soul, and nev-er for-get

all his ben- e- fits.

POSTCOMMUNION (11:00AM)

SALVE REGINA (SIMPLE TONE)

V



S Alve, Regína, \* máter misericórdi-æ: Ví-ta, dul cé-do, et spes

nóstra, sálve. Ad te clamámus, éxsules, fí-li-i Hévæ. Ad te suspirámus,

geméntes et fléntes in hac lacrimárum válle. E-ia ergo, Advocáta

nóstra, illos tú-os misericórdes óculos ad nos convérte. Et Jésum,

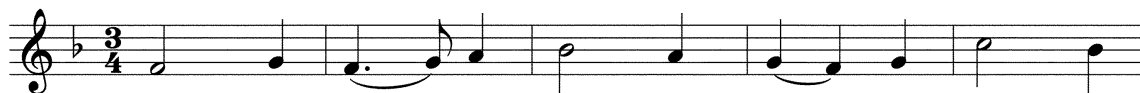
benedíctum frúctum véntris tú-i, nobis post hoc ex sí-li-um ostén de.

O clémens: O pí- a: O dúl cis \* Vir go Ma-rí- a.

## CLOSING

ALLELUIA, SING TO JESUS

HYFRYDOL



1. Al - le - lu - ia! sing to Je - sus! His the  
 2. Al - le - lu - ia! not as or - phans Are we  
 3. Al - le - lu - ia! Bread of An - gels, Here on  
 4. Al - le - lu - ia! King e - ter - nal, You the



scep - ter, his the throne; Al - le - lu - ia!  
 left in sor - row now; Al - le - lu - ia!  
 earth our food, our stay! Al - le - lu - ia!  
 Lord of lords we own; Al - le - lu - ia!



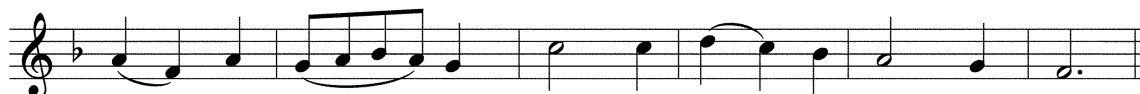
his the tri - umph, His the vic - to - ry a - lone;  
 he is near us, Faith be - lieves, nor ques - tions how:  
 here the sin - ful Flee to you from day to day:  
 born of Mar - y, Earth your foot - stool, heav'n your throne:



Hark! the songs of peace - ful Zi - on Thun - der  
 Though the cloud from sight re - ceived him, When the  
 In - ter - ces - sor, friend of sin - ners, Earth's re -  
 You, with - in the veil, have en - tered, Robed in



like a might - y flood; Je - sus out of  
 for - ty days were o'er, Shall our hearts for -  
 deem - er, plead for me, Where the songs of  
 flesh, our great high priest; Here on earth both



ev - 'ry na - tion Has re - deemed us by his blood.  
 get his prom - ise, "I am with you ev - er - more"?  
 all the sin - less Sweep a - cross the crys - tal sea.  
 priest and vic - tim In the eu - cha - ris - tic feast.

## VOLUNTARY

"MENUET GOTHIQUE" FROM SUITE GOTHIQUE

LEON BOËLLMANN

## MUSIC REMINDERS

- *We are finalizing the first-ever Cathedral Concert Series for this coming 2022-2023 year. Please look for more information soon! Donations are graciously accepted!*
- *If you enjoy singing and can read music, **please consider joining Cathedral Choir**, which leads singing at the 11:00am Mass and holy days throughout the year. A thorough description of the ensemble can be found at [www.stpaulsbhm.org/sacred-music](http://www.stpaulsbhm.org/sacred-music). Please contact the Director of Music, Bruce Ludwick, Jr., for more information! You will love being a part of this hard-working, yet fun, choir. There is a particular need for altos and sopranos! Ladies, we need your participation!*



## THE CATHEDRAL OF SAINT PAUL

2120 3RD AVENUE NORTH

BIRMINGHAM, ALABAMA 35203

WWW.STPAULSBHM.ORG 205.251.1279

THE MOST REVEREND STEVEN J. RAICA, JCD

BISHOP OF BIRMINGHAM IN ALABAMA

THE VERY REVEREND BRYAN W. JERABEK, JCL, RECTOR

### LITURGICAL SCHEDULE

SUNDAY MASSES: SATURDAY 5:00PM (ANTICIPATED), SUNDAY 7:15, 8:30, & 11:00AM

WEEKDAY MASSES: MONDAY-FRIDAY, 12:10PM

CONFESSIONS: MONDAY-FRIDAY, 11:30AM-12:00PM; SATURDAY, 3:00-4:30PM OR BY APPOINTMENT

### COPYRIGHTS

Entrance & Communion Antiphons: Adam Bartlett, © Illuminare Publications, Inc.. Responsorial Psalm: Richard Proulx, Joseph Ge-lineau, SJ, © GIA Publications, Inc. All music used with permission. Onelicense #A702187