

# THE CATHEDRAL OF SAINT PAUL

BIRMINGHAM, ALABAMA

MOST REVEREND STEVEN J. RAICA, BISHOP

VERY REVEREND BRYAN W. JERABEK, PASTOR & RECTOR

## THE SOLEMNITY OF SAINT JOHN VIANNEY

AUGUST 7, 2022



Welcome to the Cathedral of Saint Paul. The order of Mass can be found on page 3 in the Sunday's Word booklets.

### PRELUDE

SELECTIONS FROM LIVRE D'ORGUE

FRANÇOIS COUPERIN

### ENTRANCE HYMN (5:00PM & 8:30AM)

YE WATCHERS AND YE HOLY ONES

LASST UNS ERFREUEN

1. Ye watch - ers and ye ho - ly ones,  
2. O high - er than the cher - u - bim,  
3. O friends, in glad - ness let us sing.

Bright ser - aphs, cher - u - bim, and thrones,  
More glo - rious than the ser - a - phim,  
Su - per - nal an - thems ech - o - ing.

Raise the glad strain, Al - le - lu - ia!  
Lead their prais - es, Al - le - lu - ia!  
Al - le - lu - ia, Al - le - lu - ia!

Cry out, do - min - ions, prince - doms, powers,  
O bear - er of the e - ter - nal Word,  
To God the Fa - ther, God the Son,

Vir - tues, arch - an - gels, an - gels' choirs,  
Most gra - cious, mag - ni - fy the Lord,  
And God the Spir - it. Three in One.

Al - le - lu - ia. Al - le - lu - ia. Al - le - lu - ia.

Al - le - lu - ia, Al - le - lu - ia!

### ENTRANCE ANTIPHON (11:00AM) *Factus est*

CF. PSALM 18 (GRADUALE SIMPLEX)

Please join in the antiphon below after the cantor intonation.

I  
M y God has become my help.

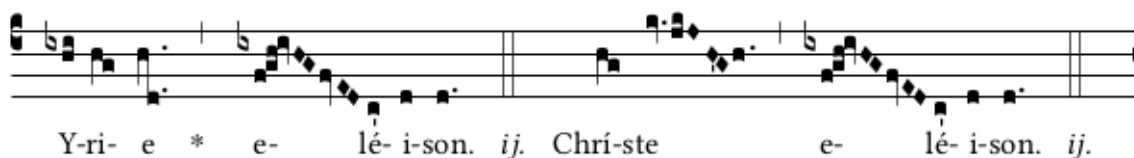
*Os iusti meditabitur sapiéntiam, et lingua eius loquétur iudícium: lex Dei eius in corde ipsius.*

*The mouth of the just man tells of wisdom, and his tongue utters what is right. The law of his God is in his heart.*

## KYRIE (ALL MASSES)

## MASS XI "ORBIS FACTOR"

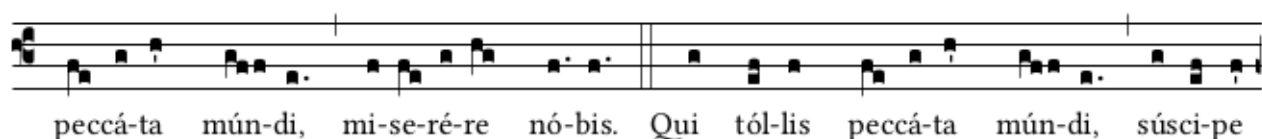
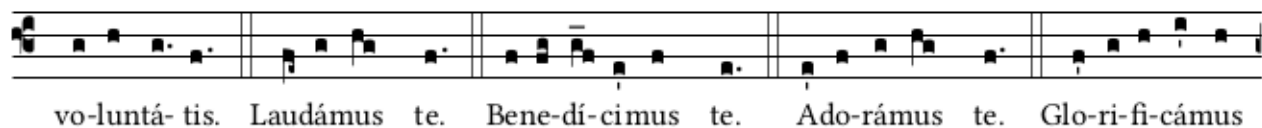
K

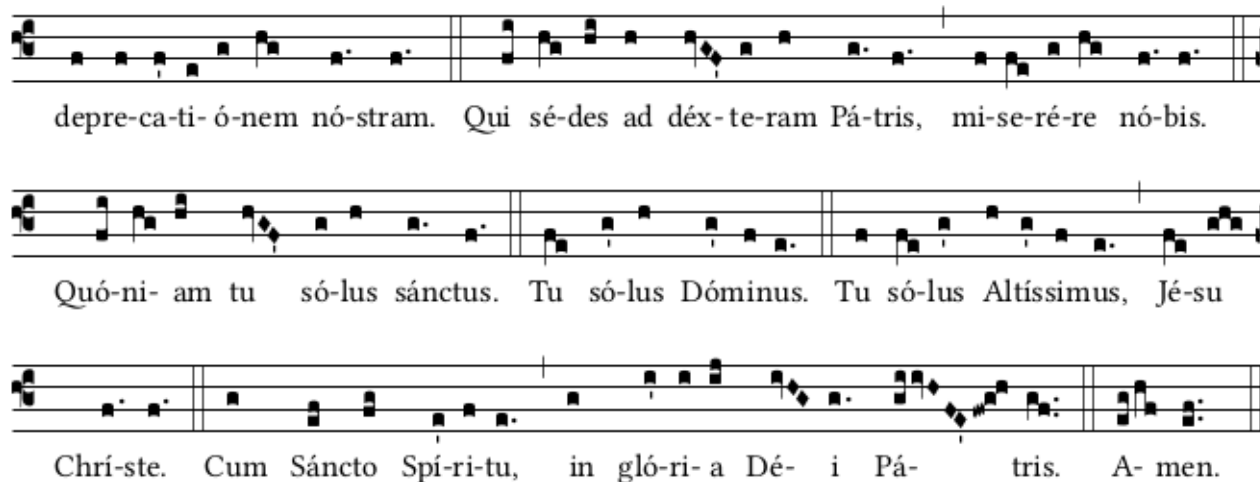


## GLORIA (5:00PM &amp; 8:30AM)

## MASS XI "ORBIS FACTOR"

G





depre-ca-ti-ó-nem nó-stram. Qui sé-des ad délix-te-ram Pá-tris, mi-se-ré-re nó-bis.

Quó-ni-am tu só-lus sánctus. Tu só-lus Dóminus. Tu só-lus Altíssimus, Jé-su

Chrí-ste. Cum Sáncto Spí-ri-tu, in gló-ri-a Dé-i Pá-tris. A-men.

GLORIA (11:00AM)

MASS OF ST. PHILIP NERI (JERNBERG)



Glo - ry to God in the high - est.

*All:*  
and on earth peace to peo - ple of good will. We praise you, we bless you, we a - dore you,

we glo - ri - fy you, we give you thanks for your great glo - ry, Lord God, hea - ven - ly

King, O God, al - migh - ty Fa - ther. Lord Je - sus Christ, On - ly Be - got - ten Son,

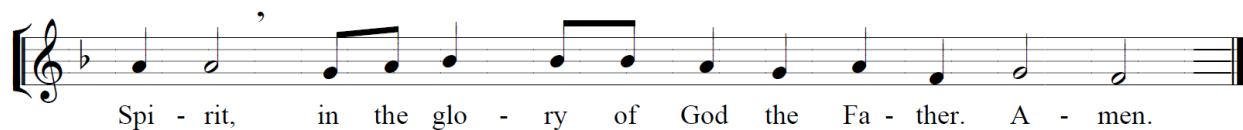
Lord God, Lamb of God, Son of the Fa - ther, you take a - way the sins of the

world, have mer - cy on us; you take a - way the sins of the world, re - ceive our

pray'r; you are seat - ed at the right hand of the Fa - ther, have mer - cy on

us. For you a - lone are the Ho - ly One, you a - lone are the Lord,

you a - lone are the Most High, Je - sus Christ, with the Ho - ly



Spi - rit, in the glo - ry of God the Fa - ther. A - men.

## THE LITURGY OF THE WORD

### RESPONSORIAL PSALM

PSALM 117:1,2



Go out to all the world and tell the Good News.

### ALLELUIA



Al - le - lu - ia, al - le - lu - ia, al - le - lu - ia.

## LITURGY OF THE EUCHARIST

### OFFERTORY ANTIPHON (11:00AM) *Veritas mea*

PSALM 89:25

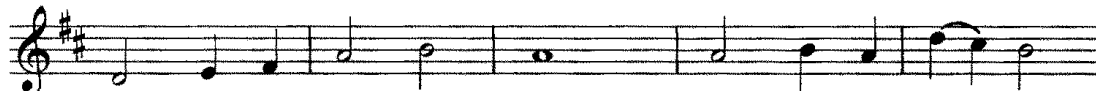
*Véritas mea et misericórdia mea cum ipso: et in nómine meo exaltábitur cornu eius.*

*My faithfulness and My kindness shall be with him, and through My name shall his horn be exalted.*

### OFFERTORY

COME DOWN, O LOVE DIVINE

DOWN AMPNEY



1. Come down, O Love di - vine, Seek now this soul of

2. O let it free - ly burn, Till earth - ly pas - sions

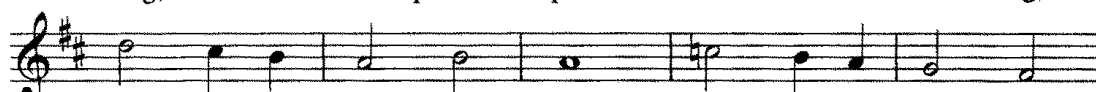
3. And so the yearn - ing strong, With which the soul will



mine, And vis - it it with your own ar - dor glow - ing;

turn To dust and ash - es in its heat con - sum - ing;

long, Shall far out - pass the power of hu - man tell - ing;



O Com - fort - er, draw near, With - in my heart ap -

And let your glo - rious light Shine ev - er on my

For none can guess its grace, Till love cre - ates the



pear, And kin - dle it, your ho - ly flame be - stow - ing.

sight, And clothe me round, the while my path il - lum - ing.

place Where - in the Ho - ly Spir - it makes its dwell - ing.

**S** Anctus, \* Sánc-tus, Sánctus Dó-minus Dé-us Sá-ba-oth.

Plé-ni sunt caé-li et tér-ra gló-ri-a tú-a. Ho-sánna in

ex-célsis. Bene-díctus qui vé-nit in nó-mi-ne Dó-mi-ni.

Ho-sánna in ex-célsis.

## SANCTUS (11:00AM)

## MASS OF ST. PHILIP NERI (JERNBERG)

Ho - ly, Ho - ly, Ho - ly Lord God of hosts.

Hea - ven and earth are full of your glo - ry. Ho - san - na in the

high - est. Bles - sed is he who comes in the name of the

Lord. Ho - san - na in the high - est.

## MYSTERIUM FIDEI

We pro-claim your Death, O Lord, and pro-fess your Res-ur-rec-tion un-til you come a-gain.

## AMEN (11:00AM)

A - men, a - men, a - men, a - men.

A - gnus Dé- i, \* qui tól-lis peccá- ta mún-di: mi-se-ré-re  
 nó-bis. Agnus Dé-i, \* qui tól-lis peccá-ta mún-di: mi-se-ré-re  
 nó-bis. Agnus Dé- i, \* qui tól-lis pec-cá- ta mún-di: dóna nó-bis  
 pá-cem.

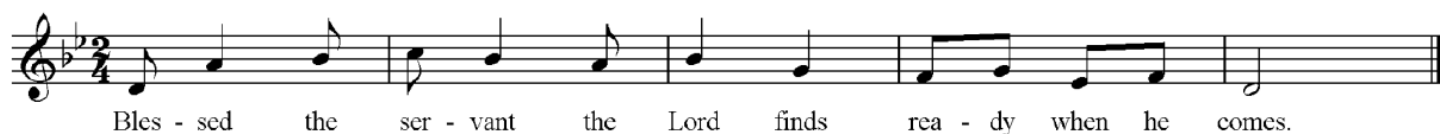
Lamb of God, you take a - way the sins of the world, have mer - cy on us.  
 Lamb of God, you take a - way the sins of the world, have mer - cy on us.  
 Lamb of God, you take a - way the sins of the world, grant us peace.

### HOLY COMMUNION

We invite all Catholics who are properly disposed (i.e., in the state of grace and having fasted for one hour before communion) to come forward in the usual way to receive Holy Communion.

All others, including our non-Catholic guests, may remain in their pews and join us in prayer. Alternatively, to participate in the communion procession and receive a blessing, come forward in the line and cross your arms over your chest as you approach the minister. Thank you.

Please join in the refrain below after the cantor introduction and between psalm verses.



## COMMUNION (11:00AM)

SET ME AS A SEAL

RENE CLAUSEN

*Set me as a seal upon your heart, As a seal upon your arm; For love is as strong as death, Many waters cannot quench love, Nor can the floods drown it. Set me as a seal upon your heart, As a seal upon your arm; For love is as strong as death.*

—Song of Songs 8:6-7



## POSTCOMMUNION (8:30 &amp; 11:00AM)

SALVE REGINA (SIMPLE TONE)

**S** Al ve, Re gí na, \* má ter mi se ricór di- æ: Ví- ta, dul cé- do, et spes

nó stra, sál ve. Ad te cla má mus, éx su les, fí- li- i Hé v æ. Ad te sus pi rá mus,

ge mén tes et flén tes in hac lac ri má rum vál le. E-ia er go, Ad vo cá ta

nó stra, il los tú- os mi se ricór des ó cu los ad nos con vé te. Et Jé sum,


be ne dí ctum frú ctum vén tris tú- i, no bis post hoc ex sí- li- um os té n de.

O clé mens: O pí- a: O dúl cis \* Vir go Ma rí- a.


## CLOSING

COME, LABOR ON


ORA ET LABORA




1 Come, la - bor on. Who dares stand i - dle  
 2 Come, la - bor on. The en - e - my is  
 3 Come, la - bor on. A - way with gloom - y  
 4 Come, la - bor on. Claim the high call - ing  
 5 Come, la - bor on. No time for rest, till



1 on the har - vest plain, while all a - round us  
 2 watch - ing night and day, to sow the tares, to  
 3 doubts and faith - less fear! No arm so weak but  
 4 an - gels can - not share— to young and old the  
 5 glows the west - ern sky, till the long sha - dows



1 waves the gold - en grain? And to each ser - vant  
 2 snatch the seed a - way; while we in sleep our  
 3 may do ser - vice here: by feeb - lest a - gents  
 4 Gos - pel glad - ness bear: re - deem the time; its  
 5 o'er our path - way lie, and a glad sound comes



1 does the Mas - ter say, "Go work to - day."  
 2 du - ty have for - got, he slum - bered not.  
 3 may our God ful - fill his right - eous will.  
 4 hours too swift - ly fly. The night draws nigh.  
 5 with the set - ting sun, "Ser - vants, well done."

## VOLUNTARY

"OFFERTOIRE" FROM MESSE POUR LES COUVENTS

FRANÇOIS COUPERIN



## COPYRIGHTS

11am Mass Setting: *Mass of St. Philip Neri*, Paul Jernberg, © 2014, Magnificat Institute, Inc. Responsorial Psalm: Michel Guimont, © GIA Publications, Inc. Communion Antiphon: Andrew Motyka, © Communionantiphons.org. Amen: Francisco Carbonell, © 2022. All music used with permission. Onelicense #A702187