

THE CATHEDRAL OF SAINT PAUL

BIRMINGHAM, ALABAMA

MOST REVEREND STEVEN J. RAICA, BISHOP

VERY REVEREND BRYAN W. JERABEK, PASTOR & RECTOR



THE THIRTIETH SUNDAY IN ORDINARY TIME

DIOCESAN WHITE MASS FOR HEALTHCARE PROFESSIONALS (11:00AM)

OCTOBER 23, 2022

Welcome to the Cathedral of Saint Paul. The order of Mass can be found on page 3 in the Sunday's Word booklets.

PRELUDE

SELECTIONS FROM *FIORI MUSICALI*

GIROLAMO FRESCOBALDI

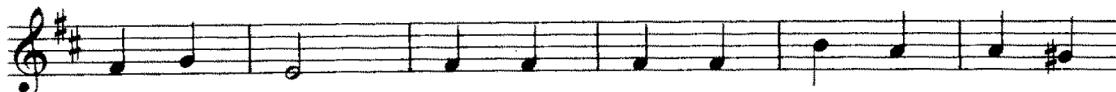
ENTRANCE HYMN (5:00PM & 8:30AM)

PRAISE, MY SOUL, THE KING OF HEAVEN

LAUDA ANIMA



1. Praise, my soul, the King of heav - en; To his feet your
2. Praise him for his grace and fa - vor To his peo - ple
3. Fa - ther - like he tends and spares us; Well our fee - ble
4. Frail as sum-mer's flow'r we flour - ish, Blows the wind and
5. An - gels, help us to a - dore him; You be - hold him



trib - ute bring; Ran-somed, healed, re - stored, for - giv - en,
in dis - tress; Praise him still the same as ev - er,
frame he knows; In his hands he gent - ly bears us,
it is gone; But while mor - tals rise and per - ish,
face to face; Sun and moon, bow down be - fore him,



Ev - er - more his prais - es sing: Al - le - lu - ia!
Slow to chide, and swift to bless: Al - le - lu - ia!
Res - cues us from all our foes. Al - le - lu - ia!
God en - dures un - chang - ing on: Al - le - lu - ia!
Dwell-ers all in time and space: Al - le - lu - ia!



Al - le - lu - ia! Praise the ev - er - last - ing King.
Al - le - lu - ia! Glo - rious in his faith - ful - ness.
Al - le - lu - ia! Wide - ly yet his mer - cy flows.
Al - le - lu - ia! Praise the high e - ter - nal one!
Al - le - lu - ia! Praise with us the God of grace.

Please join in singing the antiphon below after the cantor introduction and between psalm verses.

II
L ET the hearts that seek the Lord re-joice; turn to
the Lord and his strength; con-stant-ly seek his face.

KYRIE (5:00PM & 8:30AM)

MASS XI "ORBIS FACTOR"

K Y-ri- e * e- lé- i-son. ij. Chrí-ste e- lé- i-son. ij.
Ký-ri- e e- lé- i-son. Ký- ri- e * e- lé- i-son.

KYRIE (11:00AM)

MASS OF ST. PHILIP NERI (JERNBERG)

Lord, have mer - cy. Christ, have mer - cy.
Lord, have mer - cy. Lord, have mer - cy.

GLORIA (5:00PM & 8:30AM)

MASS XI "ORBIS FACTOR"

G Lóri- a in excélsis Dé- o. Et in térra pax homí-ni-bus bó-nae
vo-luntá- tis. Laudá-mus te. Bene-dí-cimus te. Ado-rá-mus te. Glo-ri-fi-cá-mus
te. Grá-ti- as á-gimus tí-bi propter má-gnam gló-ri- am tú- am. Dó-mi-ne
Dé- us, Rex caelé-stis, Dé- us Pá-ter omní-po-tens. Dó-mi-ne Fí- li uni-gé-ni-te



Jé-su Chrí-ste. Dómi-ne Dé-us, Agnus Dé-i, Fí-li-us Pá-tris. Qui tól-lis
 peccá-ta mún-di, mi-se-ré-re nó-bis. Qui tól-lis peccá-ta mún-di, sú-sci-pe
 depre-ca-ti-ó-nem nó-stram. Qui sé-des ad délix-te-ram Pá-tris, mi-se-ré-re nó-bis.
 Quó-ni-am tu só-lus sánctus. Tu só-lus Dóminus. Tu só-lus Altíssimus, Jé-su
 Chrí-ste. Cum Sáncto Spí-ri-tu, in gló-ri-a Dé-i Pá-tris. A-men.

GLORIA (11:00AM)

MASS OF ST. PHILIP NERI (JERNBERG)



Glo - ry to God in the high - est.
All:
 and on earth peace to peo - ple of good will. We praise you, we bless you, we a - dore you,
 we glo - ri - fy you, we give you thanks for your great glo - ry, Lord God, hea - ven - ly
 King, O God, al - migh - ty Fa - ther. Lord Je - sus Christ, On - ly Be - got - ten Son,
 Lord God, Lamb of God, Son of the Fa - ther, you take a - way the sins of the
 world, have mer - cy on us; you take a - way the sins of the world, re - ceive our
 pray'r; you are seat - ed at the right hand of the Fa - ther, have mer - cy on

us. For you a - lone are the Ho - ly One, you a - lone are the Lord,
 you a - lone are the Most High, Je - sus Christ, with the Ho - ly
 Spi - rit, in the glo - ry of God the Fa - ther. A - men.

THE LITURGY OF THE WORD

RESPONSORIAL PSALM

PSALM 34:2-3, 17-18, 19, 23

The Lord hears the cry of the poor.

ALLELUIA

Cantor, then all:
 Al - le - lu - ia, al - le - lu - ia, al - le - lu - ia.

God was reconciling the world to himself in Christ, and entrusting to us the message of salvation

LITURGY OF THE EUCHARIST

OFFERTORY

ALL CREATURES OF OUR GOD AND KING

LASST UNS ERFREUEN

1. All crea - tures of our God and king, Lift up your voi -
 2. Great rush - ing winds who are so strong, You clouds a - bove
 3. Swift flow - ing wa - ter, pure and clear, Make mu - sic for
 4. Dear moth - er earth, who day by day Un - fold your bless -
 5. Let all things their cre - a - tor bless, And wor - ship him

1. ces let us sing: Al - le - lu - ia, al - le - lu - ia; Bright
 2. that sail a - long, O _____ praise him, al - le - lu - ia; Fair
 3. your Lord to hear, Al - le - lu - ia, al - le - lu - ia; Fire
 4. ings on our way, O _____ praise him, al - le - lu - ia; All
 5. in hum - ble - ness, O _____ praise him, al - le - lu - ia; Praise

1. burn - ing sun with gold - en beams, Soft sil - ver moon
 2. ris - ing morn, with praise re - joice, Stars night - ly shin -
 3. so in - tense and fierce - ly bright, Who gives to us
 4. flowers and fruits that in you grow, Let them his glo -
 5. God the Fa - ther, praise the Son, And praise the Spir -

1. that gent - ly gleams, O ——— praise him, O ——— praise him,
 2. ing, find a voice, O ——— praise him, O ——— praise him,
 3. both warmth and light, O ——— praise him, O ——— praise him,
 4. ry al - so show: O ——— praise him, O ——— praise him,
 5. it, three in one: O ——— praise him, O ——— praise him,

1.-5. Al - le - lu - ia, al - le - lu - ia, al - le - lu - ia.

SANCTUS (5:00PM & 8:30AM)

MASS XI "ORBIS FACTOR"

S Anctus, * Sânc-tus, Sânc-tus Dó-minus Dé-us Sá-ba-oth.

Plé-ni sunt caé-li et tér-ra gló-ri-a tú-a. Ho-sánna in

ex-célsis. Bene-díctus qui vé-nit in nó-mi-ne Dó-mi-ni.

Ho-sánna in ex-célsis.

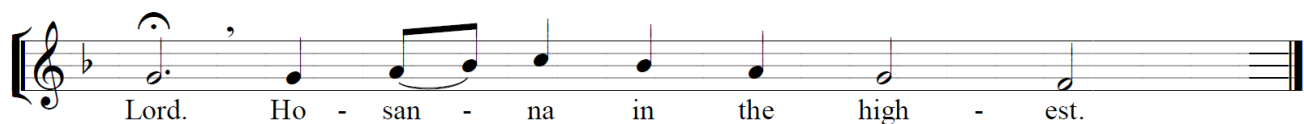
SANCTUS (11:00AM)

MASS OF ST. PHILIP NERI (JERNBERG)

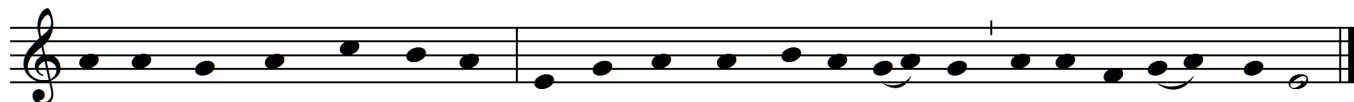
Ho - ly, Ho - ly, Ho - ly Lord God of hosts.

Hea - ven and earth are full of your glo - ry. Ho - san - na in the

high - est. Bles - sed is he who comes in the name of the

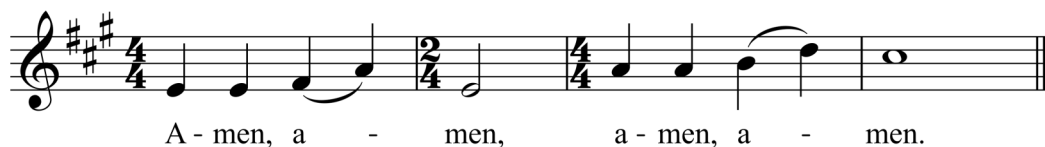


MYSTERIUM FIDEI



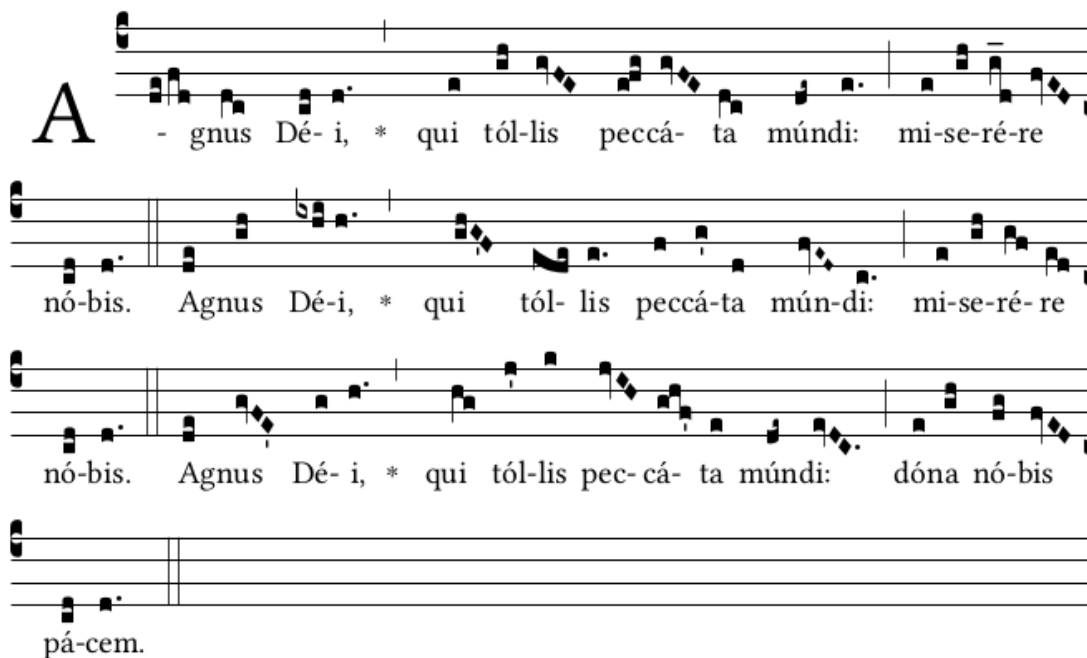
We pro-claim your Death, O Lord, and pro-fess your Res-ur - rec - tion un-til you come a-gain.

AMEN (11:00AM)



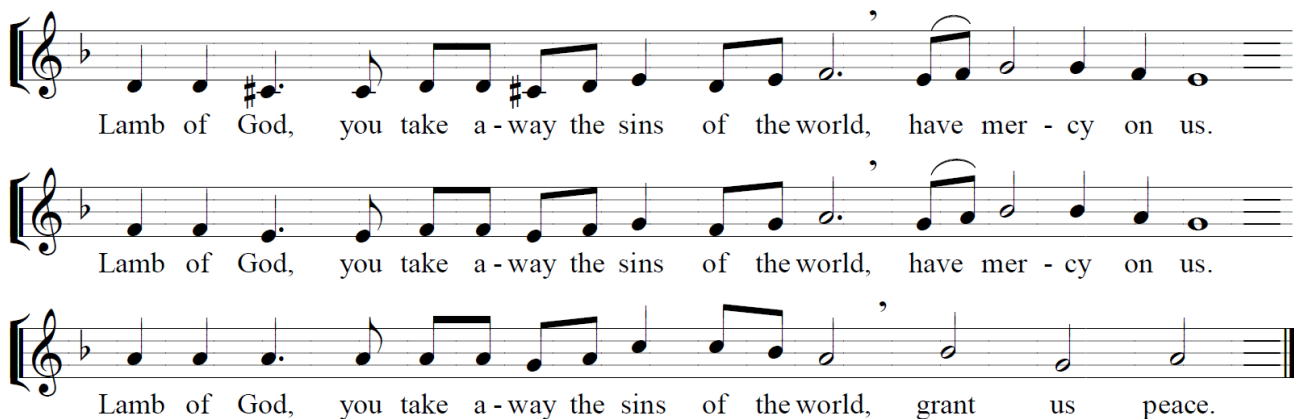
AGNUS DEI (5:00PM & 8:30AM)

MASS XI "ORBIS FACTOR"



AGNUS DEI (11:00AM)

MASS OF ST. PHILIP NERI (JERNBERG)



HOLY COMMUNION

We invite all Catholics who are properly disposed (i.e., in the state of grace and having fasted for one hour before communion) to come forward in the usual way to receive Holy Communion.

All others, including our non-Catholic guests, may remain in their pews and join us in prayer. Alternatively, to participate in the communion procession and receive a blessing, come forward in the line and cross your arms over your chest as you approach the minister. Thank you.

COMMUNION ANTIPHON (ALL MASSES) *Laetabimur*

CF. PSALM 20:6

Please join in the antiphon below after the cantor introduction and between verses.

II

W E will ring out our joy at your sav-ing help

and ex- ult in the name of our God.

COMMUNION (11:00AM)

AVE MARIA À 5

ROBERT PARSONS

POSTCOMMUNION (8:30 & 11:00AM)

SALVE REGINA (SIMPLE TONE)

v

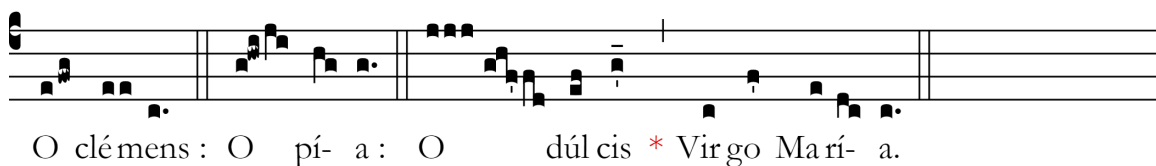
S Al ve, Re gí na, * má ter mi se ricór di- æ: Ví- ta, dul cé- do, et spes

nó stra, sál ve. Ad te cla má mus, éx su les, fí- li- i Hé væ. Ad te sus pi rá mus,

ge mén tes et flén tes in hac lac ri má rum vá lle. E-ia ergo, Ad vo cá ta

nó stra, illos tú- os mi se ricór des ó cu los ad nos con vé te. Et Jé sum,

be ne dí ctum frú ctum vén tris tú- i, nobis post hoc ex sí- li- um os tén de.



CLOSING

HAIL, HOLY QUEEN

SALVE REGINA COELITUM



VOLUNTARY

FANTASIE IN E-FLAT

CAMILLE SAINT-SAËNS



COPYRIGHTS

11am Mass Setting: *Mass of St. Philip Neri*, Paul Jernberg, © 2014, Magnificat Institute, Inc. Responsorial Psalm: Michel Guimont, © GIA Publications, Inc. Communion Antiphon: Adam Bartlett, © Illuminare Publications, Inc. Amen: Francisco Carbonell, © 2022. All music used with permission. Onelicense #A702187