

THE CATHEDRAL OF SAINT PAUL

BIRMINGHAM, ALABAMA

MOST REVEREND STEVEN J. RAICA, BISHOP

VERY REVEREND BRYAN W. JERABEK, PASTOR & RECTOR

THE FOURTH SUNDAY OF LENT «LAETARE»

MARCH 19, 2023



Welcome to the Cathedral of Saint Paul. The order of Mass can be found on page 3 in the Sunday's Word booklets.

VOLUNTARY

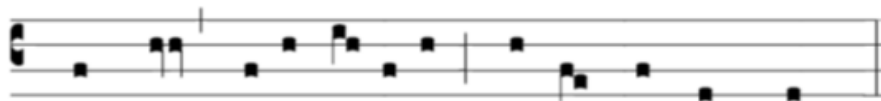
AN WASSERFLÜSSEN BABYLON, BWV 653

J.S. BACH

ENTRANCE ANTIPHON (5:00PM & 8:30AM) *Laetare Ierusalem*

CF. ISAIAH 66:10-11

Please join in the antiphon below after the cantor introduction and in between psalm verses.



5. Re-joice, O Je-ru-sa-lem, all you who love her.

ENTRANCE ANTIPHON (11:00AM) *Laetare Ierusalem*

CF. ISAIAH 66:10-11

Laetare Ierusalem: et convéntum fácite, omnes qui diligitis eam: gaudéte cum lætítia, qui in tristítia fuístis: ut exsultétis, et satiémíni ab ubéribus consolatiónis vestræ. *℟℣* *Lætátus sum in his, quæ dicta sunt mihi: in domum Dómini íbimus.* / Rejoice, Jerusalem, and all who love her. Be joyful, all who were mourning; exult and be satisfied at her consoling breast. *℟℣* *I rejoiced when it was said unto me: let us go to the house of the Lord.*

KYRIE (5:00PM & 8:30AM)

MASS XVII

VI

K Y-ri- e * e- lé- i-son. *ij.* Chrí ste e- lé- i-son. *ij.* Ký-ri- e

e- lé- i-son. Ký-ri- e * e- lé- i-son.

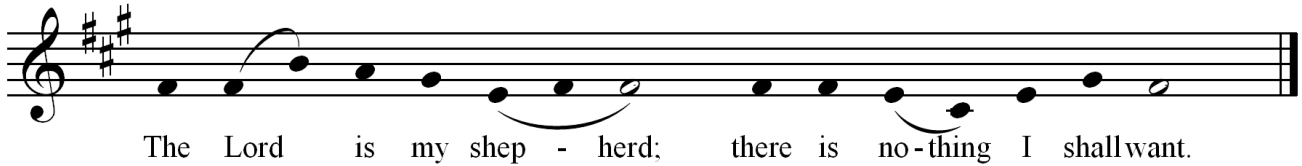
KYRIE (11:00AM)

MASS IN G, OP. 151 «ST. CRUCIS» (RHEINBERGER)

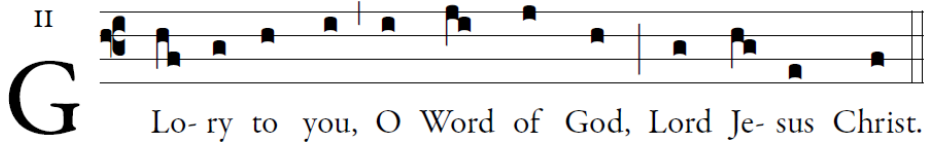
THE LITURGY OF THE WORD

RESPONSORIAL PSALM

PSALM 23:1-3A, 3B-4, 5, 6



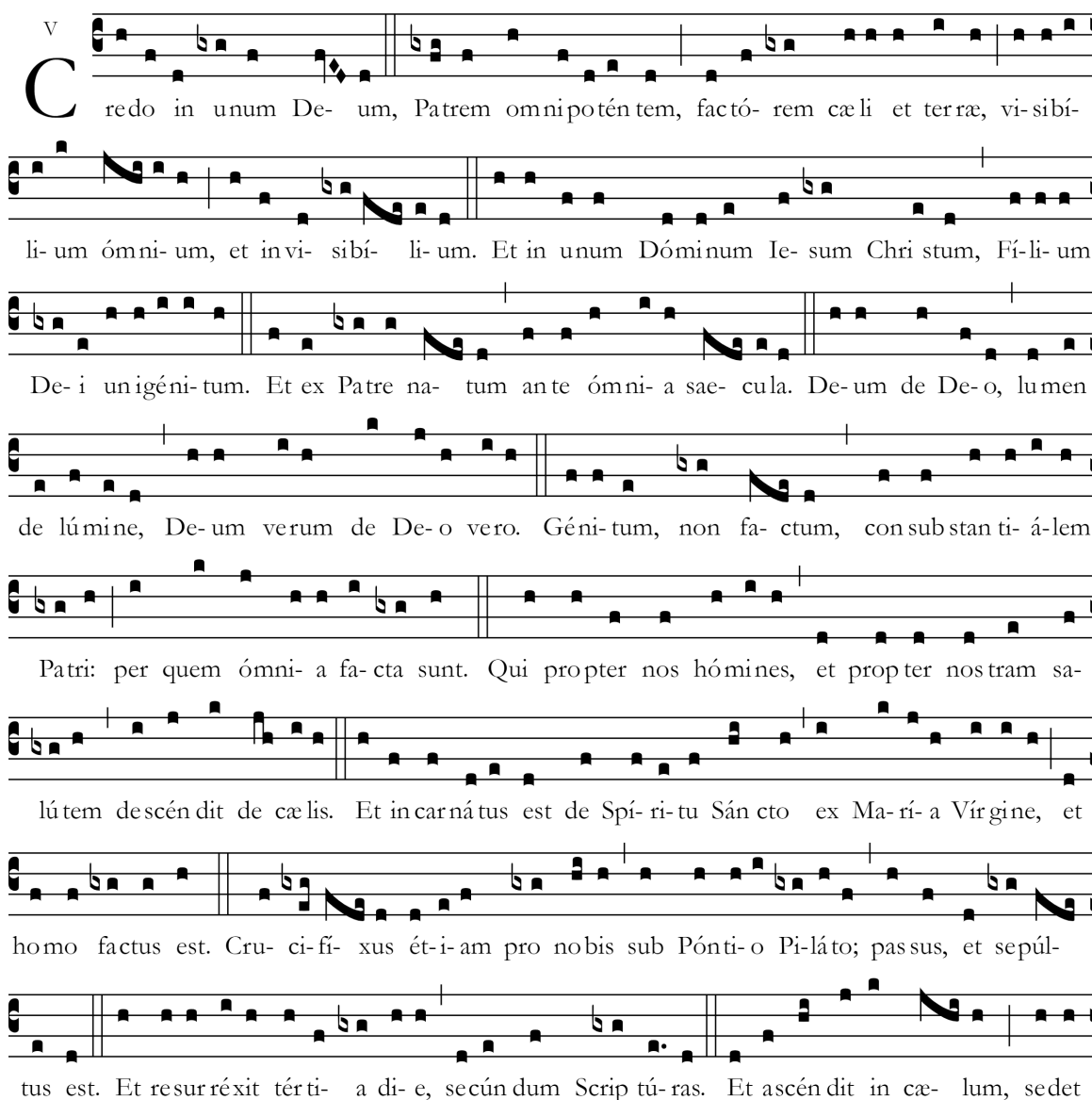
VERSE BEFORE THE GOSPEL

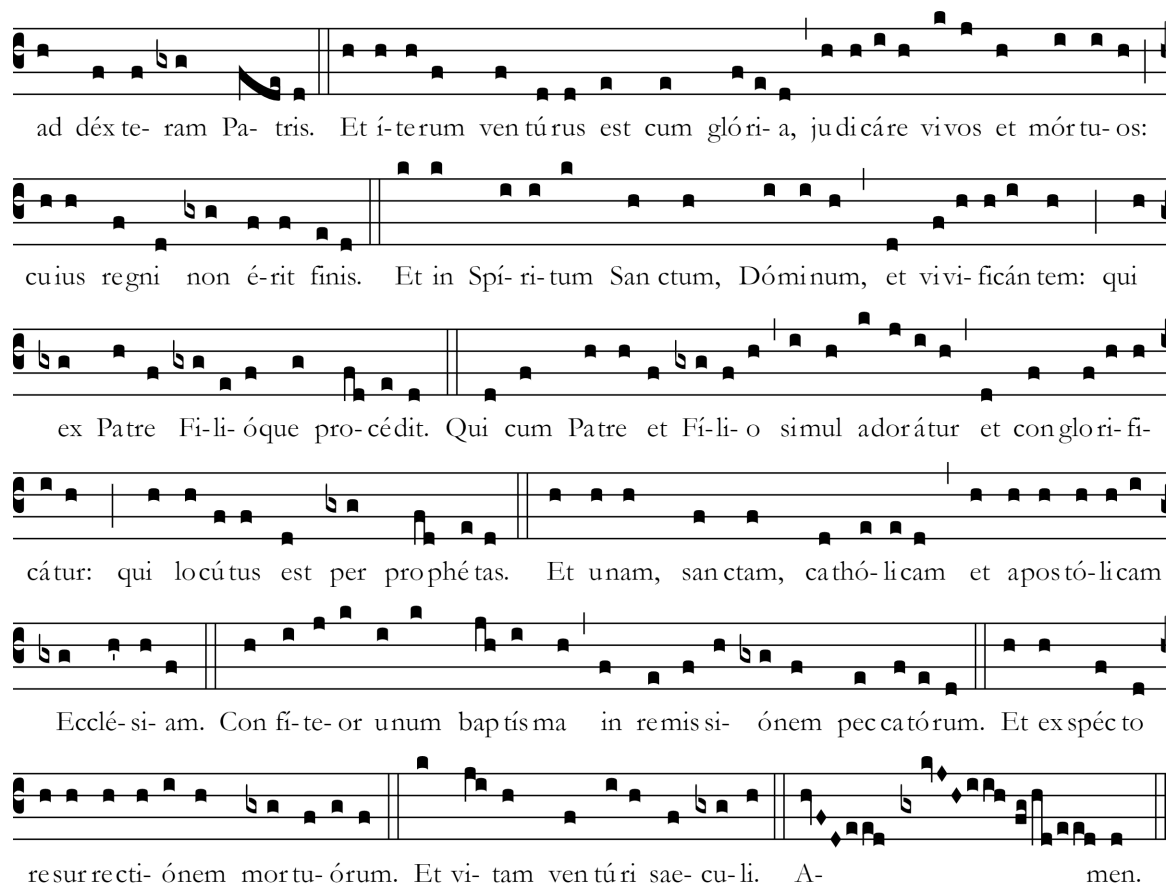


I am the light of the world, says the Lord; whoever follows me will have the light of life.

CREED (11:00AM)

CREDO III





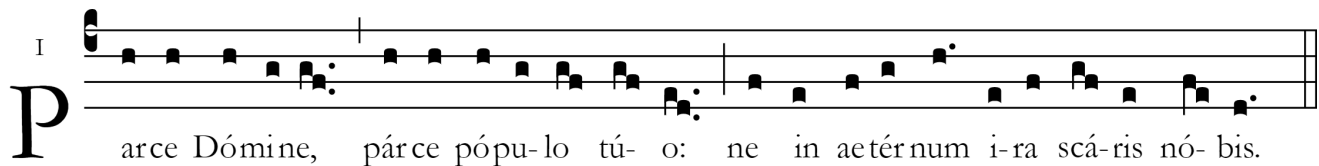
ad dēx-te-rā Pa-tris. Et i-terum ven-tūrus est cum glōri-a, iudicāre vivos et mōrtu-os:
 cuius regni non é-rit finis. Et in Spí-ri-tum San-ctum, Dóminum, et vi-vi-ficān-tem: qui
 ex Patre Fi-li-óque pro-cédit. Qui cum Patre et Fí-li-o simul adorátur et conglo-ri-fi-
 cátur: qui locú-tus est per prophé-tas. Et unam, san-ctam, cathó-licam et apostó-licam
 Ecclé-si-am. Con-fí-te-or unum bap-tís-ma in remissi-ónem pec-cató-rum. Et ex-spéc-to
 resur-recti-ónem mortu-ó-rum. Et vi-tam ven-tú-ri sae-cu-li. A-men.



LITURGY OF THE EUCHARIST

OFFERTORY HYMN (ALL MASSES)

PARCE DOMINE



Parce Dómine, párcce pópu-lo tú-o: ne in aetér-num i-ra scá-ris nó-bis.

Spare Your people, spare Your people, Lord: do not be angry with us forever.

OFFERTORY ANTIPHON (11:00AM) *Laudate Dominum*

PSALM 135:3-6

Laudáte Dóminum, quia benígnus est: psállite nómini eius, quóniam suávis est: ómnia, quaecúmque vóluit, fecit in caelo et in terra. / *Praise the Lord, for he is good: Sing a psalm to his name, for he is delightful: The Lord does whatever he wills, in heaven and on earth.*

SANCTUS (5:00PM & 8:30AM)


MASS XVII

S ^v an- ctus, * Sán- ctus, Sán- ctus Dóminus Dé- us Sá- ba- oth. Plé- ni sunt cae- li
et tér- ra gló- ri- a tú- a. Ho- sán- na in excél- sis. Bene- díctus qui vé- nit in nó-
mi- ne Dómi- ni. Ho- sán- na in excél- sis.

SANCTUS & AGNUS DEI (11:00AM)

MASS IN G, OP. 151 «ST. CRUCIS» (RHEINBERGER)

MYSTERIUM FIDEI



We pro-claim your Death, O Lord, and pro-fess your Res-ur- rec - tion un-til you come a-gain.



AGNUS DEI (5:00PM & 8:30AM)

MASS XVII

A ^v - gnus Dé- i, * qui tól- lis peccá- ta mún di: mi- se- ré- re nó- bis.
Agnus Dé- i, * qui tól- lis peccá- ta mún di: mi- se- ré- re nó- bis. A- gnus
Dé- i, * qui tól- lis peccá- ta mún di: dóna nó- bis pá- cem.

HOLY COMMUNION

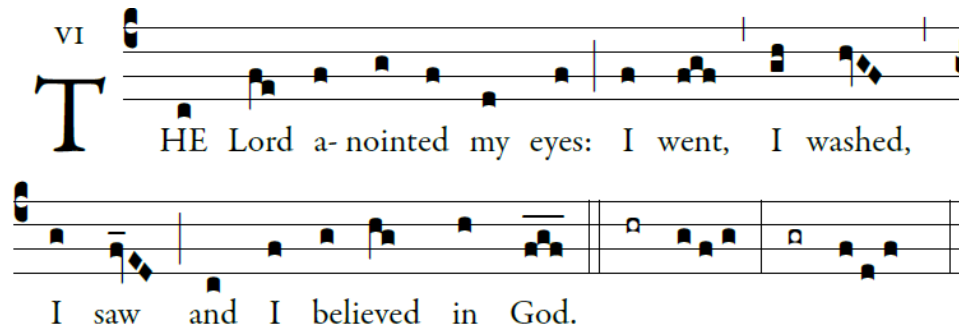
We invite all Catholics who are properly disposed (i.e., in the state of grace and having fasted for one hour before communion) to come forward in the usual way to receive Holy Communion.

All others, including our non-Catholic guests, may remain in their pews and join us in prayer. Alternatively, to participate in the communion procession and receive a blessing, come forward in the line and cross your arms over your chest as you approach the minister. Thank you.

COMMUNION ANTIPHON (ALL MASSES) *Dominus linivit oculus*

CF. JOHN 9:11,36

Please join in the refrain below after the cantor introduction and between each verse of Psalm 27.



POSTCOMMUNION (5:00PM & 8:30AM)

AVE REGINA CAELORUM

SIMPLE TONE

POSTCOMMUNION (11:00AM)

AVE REGINA CAELORUM

JOSEF RHEINBERGER

Hail, Queen of Heaven; Hail, Lady of the Angels; Hail, the root; Hail the gate; From which the Light dawned upon the world. Rejoice, O glorious Virgin, Lovely above all; Fare thee well, O most beautiful: And pray for us to Christ.

CLOSING

THE GLORY OF THESE FORTY DAYS

ERHALT UNS, HERR



1. The glo - ry of these for - ty days We
2. A - lone and fast - ing Mo - ses saw The
3. So Dan - iel trained his mys - tic sight, De -
4. Then grant, O God, that we may, too, Re -



cel - e - brate with songs of praise; For Christ, through whom all
lov - ing God who gave the law; And to E - li - jah,
liv - ered from the li - ons' might; And John, the Bride-groom's
turn in fast and prayer to you. Our spir - its strength - en

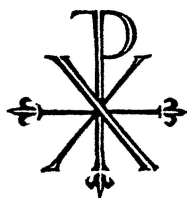


things were made, Him - self has fast - ed and has prayed.
fast - ing, came The steeds and char - i - ots of flame.
friend, be - came The her - ald of Mes - si - ah's name.
with your grace, And give us joy to see your face.

VOLUNTARY

PRELUDE IN B, BWV 544

J.S. BACH



MUSIC ANNOUNCEMENTS

WWW.STPAULSBHM.ORG/CONCERTS

OUR NEXT CONCERT ISN'T A CONCERT...BUT A DEVOTION!

PLEASE JOIN US FOR

STATIONS OF THE CROSS WITH CATHEDRAL CHOIR!

FRIDAY, MARCH 24, 2023, AT 5:30PM

ALL CONCERTS ARE FREE TO THE PUBLIC; ALL ARE WELCOME!

THIS IS AN IDEAL OPPORTUNITY TO BRING A VISITOR TO THE CATHEDRAL, OR TO INTRODUCE SOMEONE TO OUR CATHOLIC FAITH! AS ALWAYS, A FISH FRY COURTESY OF OUR KNIGHTS OF COLUMBUS FOLLOWS

STATIONS OF THE CROSS. COME JOIN US!

ABOUT TODAY'S MUSIC

This weekend, we celebrate the liturgy for *Laetare Sunday*, so named for the text of the entrance antiphon of the day: "Rejoice, O Jerusalem!" Musically, it is seen as a respite from the Lenten strictures of no instrumental music and so on. However, the introit text shows us the inner, joyful meaning of this day, and casts the entire Lenten season within the redemptive mission of Our Lord Jesus Christ. A Bach chorale-prelude and free work frame the day. The first, *An Wasserflüssen Babylon*, is one of Bach's "Leipzig" chorales, the most mature expression of his chorale-based work. This piece sets Psalm 139, which describes the exile of the Israelites in Egypt. This particular setting seems to focus more on the "aquatic" elements of the text, as we hear the river Babylon flowing gently through the triple-time accompaniment, perhaps showing a sense of quiet resignation to the current situation, so to speak, although the setting is absolutely not without emotion. The voluntary after Mass is one of Bach's most monumental prelude settings along with the *Prelude and Fugue in C*, BWV 547. The difference here is that both the b minor work is brooding and relatively slow-moving in both the prelude and the fugue, with the architecture taking center stage. We immediately hear Italianate influence, too, and a hearty dose of Vivaldian *ritornello* (recurring theme) practice. It is amazing to think how cosmopolitan Bach was whilst never visiting anywhere outside of present-day Germany. It is yet another sign of his profound genius. The choral ordinary and motet at 11:00am are compositions of the Romantic master Josef Rheinberger. A close friend of both Brahms and Wagner (which, knowing both composers, was a real accomplishment!), Rheinberger was one of the most important 19th Century German composers and musicians. As with all Rheinberger's music, it is extremely well-crafted, suffering neither from defects of form nor of inspiration as regards melody and harmony. Rheinberger, born in Liechtenstein, eventually became court music director for Ludwig II of Bavaria as well as professor at the Munich Conservatory. A musician with a tremendously varied career, Rheinberger gained renown for his church compositions, but along the way also prepared the premieres of all Wagner's operas, and became the central figure in German Catholic church music of the late 19th Century. Refusing to take sides for or against Wagner's work, he is often uncharitably lumped with the various figures of the Caecilian movement in Germany, to whom he was sympathetic, but above whose work his own compositions stand. In his characteristic way, this motet is lush but does not involve the extreme chromatic ambiguity that Wagner's work advocated. Rather, it deploys chromaticism in a traditional way to indicate textual accents and other musical devices. Rheinberger's *Holy Cross Mass* is one of the more frequently performed sacred works: it is modest in proportion, but characteristically varied in expression. It was performed first during Holy Week (despite the misleading attribution that would indicate the Exaltation of the Holy Cross), but does include all movements of the Mass ordinary. Rheinberger, ever the expert orchestrator and arranger, leaves us many brilliant textures, lines, and moments, utilizing the simple SATB choral texture as he would an orchestra. His music is not well-known in the US, but for Catholics, his Masses in particular are a landmark of our musical heritage and should be heard more frequently! Happy Laetare Sunday!



THE CATHEDRAL OF SAINT PAUL

2120 3RD AVENUE NORTH

BIRMINGHAM, ALABAMA 35203

WWW.STPAULSBHM.ORG 205.251.1279

THE MOST REVEREND STEVEN J. RAICA, JCD

BISHOP OF BIRMINGHAM IN ALABAMA

THE VERY REVEREND BRYAN W. JERABEK, JCL, RECTOR

LITURGICAL SCHEDULE

SUNDAY MASSES

SATURDAY 5:00PM (ANTICIPATED), SUNDAY 7:15, 8:30, & 11:00AM

WEEKDAY MASSES

MONDAY-FRIDAY, 12:10PM

CONFESSIONS

MONDAY-FRIDAY, 11:30AM-12:00PM; SATURDAY, 3:00-4:30PM OR BY APPOINTMENT

COPYRIGHTS

Entrance Antiphon: Fr. Columba Kelly, OSB, © St. Meinrad Archabbey. Responsorial Psalm: Fr. Samuel F. Weber, OSB, © St. Meinrad Archabbey. Verse before the Gospel: Columba Kelly, OSB, © St. Meinrad Archabbey. Communion Antiphon: Adam Bartlett, © Illuminare Publications, Inc. All music used with permission. Onelicense #A702187