

# THE CATHEDRAL OF SAINT PAUL

BIRMINGHAM, ALABAMA

MOST REVEREND STEVEN J. RAICA, BISHOP

VERY REVEREND BRYAN W. JERABEK, PASTOR & RECTOR

## THE ELEVENTH SUNDAY IN ORDINARY TIME

JUNE 18, 2023



Welcome to the Cathedral of Saint Paul. The order of Mass can be found on page 3 in the Sunday's Word booklets found in the pew racks.

### PRELUDE

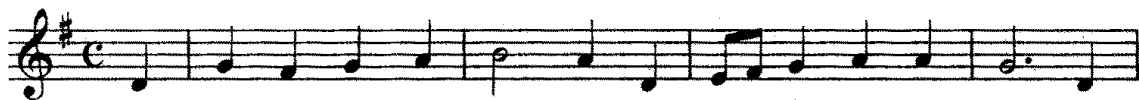
PRELUDE IN G, BWV 541

J.S. BACH

### ENTRANCE HYMN

O GOD, ALMIGHTY FATHER

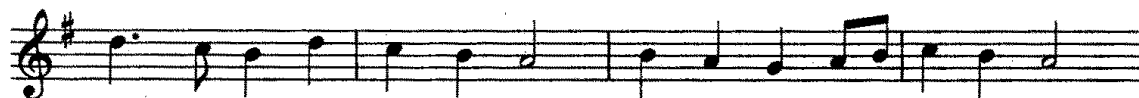
GOTT VATER SEI GEPRIESEN



1. O God, al-might - y Fa - ther, Cre - a - tor of all things, The
2. O Je - sus, Word in - car - nate, Re - deem-er most a - dored, All
3. O God, the Ho - ly Spir - it, Who lives with - in our soul, Send



heav-ens stand in won - der, While earth your glo - ry sings.  
glo - ry, praise, and hon - or Be yours, O sov-'reign Lord.  
forth your light and lead us To our e - ter - nal goal.



O most ho - ly Trin - i - ty, Un - di - vid - ed u - ni - ty,



Ho - ly God, might - y God, God im - mor - tal be a - dored!

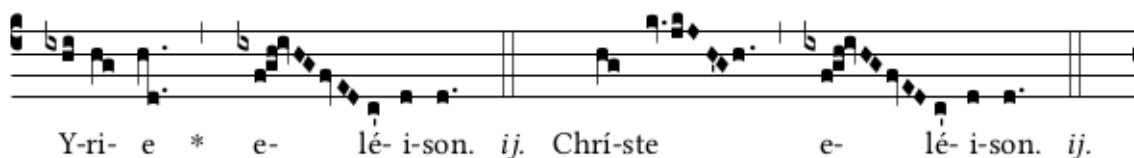
### ENTRANCE ANTIPHON (8:30 & 11:00AM) *Exaudi Domine*

CF. PSALM 27:7,9,1

*Exaudi, Domine, vocem meam, qua clamavi ad te. Adiutor meus esto, ne derelinquas me, neque despicias me, Deus salutaris meus. ✠ Dominus illuminatio mea: et salus mea: quem timebo?*

O Lord, hear my voice, for I have called to You; be my help. Do not abandon or forsake me, O God, my Savior. ✠ *The Lord is my light and my salvation; whom shall I fear?*

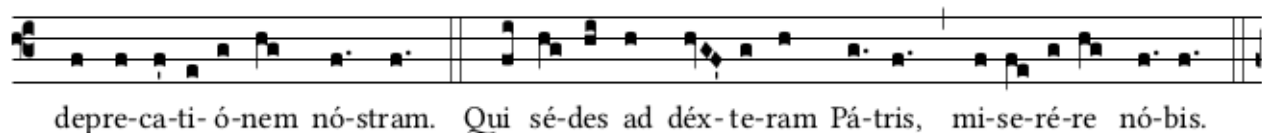
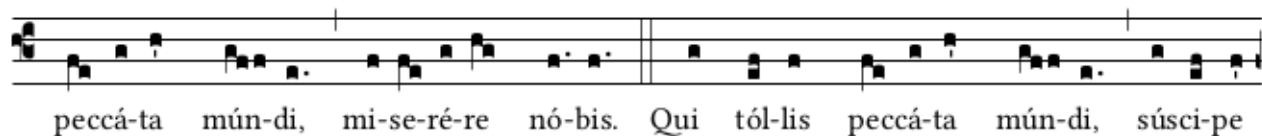
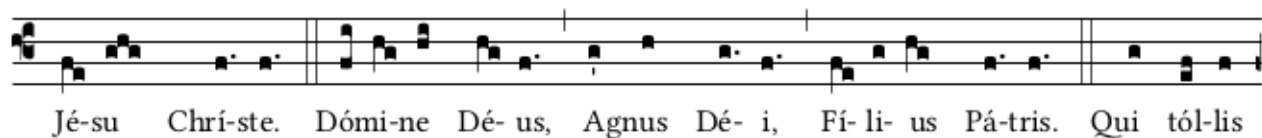
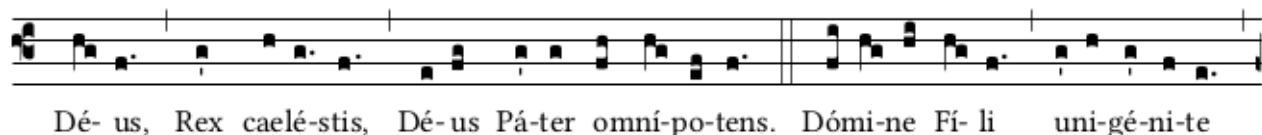
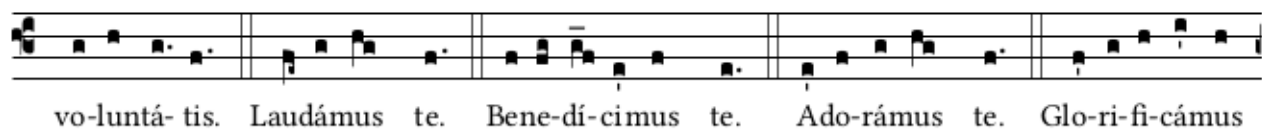
K



## GLORIA

## MASS XI «ORBIS FACTOR»

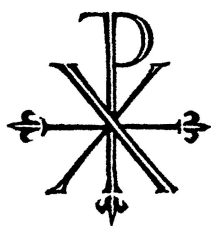
G





Quó-ni- am tu só-lus sánctus. Tu só-lus Dóminus. Tu só-lus Altíssimus, Jé-su

Chrí-ste. Cum Sáncto Spí-ri-tu, in gló-ri-a Dé- i Pá- tris. A- men.



## THE LITURGY OF THE WORD

RESPONSORIAL PSALM

PSALM 100



We are his peo - ple, the sheep of his flock.

ALLELUIA

GELOBT SEI GOTT



Al - le - lu - ia, \_\_\_\_\_ al - le - lu - ia, \_\_\_\_\_ al - le - lu - ia!

The kingdom of God is at hand: repent and believe in the Gospel.

# LITURGY OF THE EUCHARIST

## OFFERTORY

ALL MY HOPE ON GOD IS FOUNDED

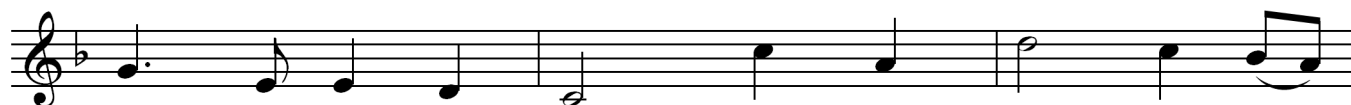
MICHAEL



1. All my hope on God is found - ed; He doth still my
2. Mor - tal pride and earth - ly glo - ry, sword and crown be -
3. God's great good - ness e'er en - dur - eth, deep his wis - dom
4. Dai - ly doth the al - might - y Giv - er boun - teous gifts on
5. Still from earth to God e - ter - nal sac - ri - fice of



trust re - new. Me through change and chance he guid - eth, on - ly  
tray our trust; though with care and toil we build them, tower and  
pass - ing thought: splen - dor, light, and life at - tend him, beau - ty  
us be - stow; his de - sire our soul de - light - eth, plea - sure  
praise be done, high a - bove all prais - es prais - ing for the



good and on - ly true. God un - known, he a -  
tem - ple fall to dust. But God's power, hour by  
spring - eth out of nought. Ev - er - more from his  
leads us where we go. Love doth stand at his  
gift of Christ, his son. Christ doth call one and



lone calls my heart to be his own.  
hour, is my tem - ple and my tower.  
store new - born worlds rise and a - dore.  
hand; joy doth wait on his com - mand.  
all: ye who fol - low shall not fall.



## OFFERTORY ANTIPHON (11:00AM) *Benedicam Dominum*

PSALM 15:7,8

Benedicam Dóminum, qui tribuit mihi intelléctum: providébam Dóminum in conspéctu meo semper:  
quóniam a dextris est mihi, ne commóvear.

*I will bless the Lord, Who counsels me; I set the Lord ever before me; with Him at my right hand, I shall not be moved.*

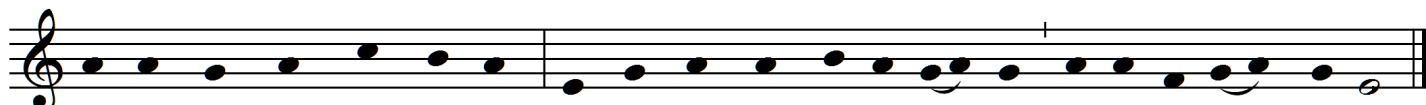
**S** Anctus, \* Sánc-tus, Sánctus Dó-minus Dé-us Sá-ba-oth.

Plé-ni sunt caé-li et tér-ra gló-ri-a tú-a. Ho-sánna in

ex-célsis. Bene-díctus qui vé-nit in nó-mi-ne Dó-mi-ni.

Ho-sánna in ex-célsis.

## MYSTERIUM FIDEI



We pro-claim your Death, O Lord, and pro-fess your Res-ur-rec-tion un-tíl you come a-gain.

## AGNUS DEI

## MASS XI «ORBIS FACTOR»

**A** - gnus Dé-i, \* qui tól-lis peccá-ta mún-di: mi-se-ré-re

nó-bis. Agnus Dé-i, \* qui tól-lis peccá-ta mún-di: mi-se-ré-re

nó-bis. Agnus Dé-i, \* qui tól-lis pec-cá-ta mún-di: dóna nó-bis

pá-cem.

## HOLY COMMUNION

We invite all Catholics who are properly disposed (i.e., in the state of grace and having fasted for one hour before communion) to come forward in the usual way to receive Holy Communion.

All others, including our non-Catholic guests, may remain in their pews and join us in prayer. Alternatively, to participate in the communion procession and receive a blessing, come forward in the line and cross your arms over your chest as you approach the minister. Thank you.

COMMUNION ANTIPHON (ALL MASSES) *Unam petii*

PSALM 27:4

*Please join in the antiphon below after the cantor introduction and between verses.*



## POSTCOMMUNION (ALL MASSES)

## SALVE REGINA (SIMPLE TONE)

v

**S** Al ve, Re gí na, \* má ter mi se rí cór di - æ : Ví - ta, dul cé - do, et spes

nó stra, sál ve. Ad te cla má mus, éx su les, fí - li - i Hé v æ. Ad te sus pí ra mus,

ge mén tes et flén tes in hac lacrí má rum vál le. E - ia er go, Ad vo cá ta

nó stra, íl los tú - os mi se rí cór des ó cu los ad nos con vér te. Et Jé sum,

be ne dí ctum frú ctum vén tris tú - i, nobis post hoc ex sí - li - um ostén de.

O clé mens : O pí - a : O dúl cis \* Vir go Ma rí - a.

## COMMUNION (11:00AM)

O SALUTARIS HOSTIA

LÉO DELIBES

O salutaris hostia quae caeli pandis ostium. Bella premunt hostilia; da robur, fer auxilium. Uni trinoque Domino sit sempiterna gloria: qui vitam sine termino, nobis donet in patria. Amen.

*O saving victim who opens the gate of heaven, hostile wars press on us: give strength, bring aid. To the Lord, three in one, be everlasting glory, for life without end he gives us in (his) Kingdom. Amen.*

## CLOSING

REJOICE, THE LORD IS KING

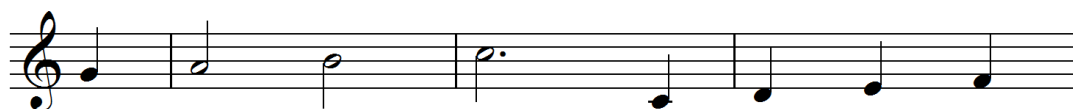
DARWALL'S 148TH



Re - joyce, the Lord is King! Your Lord and King a - dore;  
The Lord, our Sa - vior, reigns, the God of truth and love;  
His king - dom can - not fail, He rules o'er earth and Heav'n,  
Re - joyce in glo - rious hope! Our Lord, the Judge shall come,  
To you, O glor - ious God, let all our praise as - cend;



Re - joyce, give thanks and sing, and tri - umph ev - er - more;  
When He had purged our stains He took His seat a - bove;  
The keys of death and hell are to our Je - sus giv'n;  
And take His ser - vants up to their e - ter - nal home.  
Fa - ther and Son, with Ho - ly Ghost, praise with - out end!



Lift up your heart, lift up your voice;



Re - joyce, a - gain I say, re - joyce!

## VOLUNTARY

FUGUE IN G, BWV 541

J.S. BACH

## COPYRIGHTS

Responsorial Psalm: Marie Kremer, Joseph Gelineau, SJ, © GIA Publications, Inc. Communion Antiphon: Andrew Motyka, ©  
www.communionantiphons.org. All music used with permission. Onelicense #A702187

## MUSIC REMINDERS

- *We are working on the finishing touches of the 2023-2024 Downtown Concert Series.* This year's debut season was a success: as we build on it, would you consider sponsoring an event? No amount is too small, and if one does not wish to underwrite an entire concert, approach friends and fellow parishioners to come together. We will put forth offerings on the Anna Catharine Grace Memorial Pipe Organ, but also concerts for other instruments and choral concerts (which are rather more expensive). Please contact the Director of Music at [Ludwick@stpaulsbhm.org](mailto:Ludwick@stpaulsbhm.org).
- *Thank you, Cathedral Choir!* Cathedral Choir's 2022-2023 season officially ended last weekend at Corpus Christi Masses. If you see a choir member, please thank them for the many hours a week they spend beautifying our liturgy! Staff singers continue singing through the end of June, with a well-deserved break for the month of July. If you are interested in joining choir, this is right time to contact us!



## THE CATHEDRAL OF SAINT PAUL

2120 3RD AVENUE NORTH

BIRMINGHAM, ALABAMA 35203

[WWW.STPAULSBHM.ORG](http://WWW.STPAULSBHM.ORG) 205.251.1279

THE MOST REVEREND STEVEN J. RAICA, JCD  
BISHOP OF BIRMINGHAM IN ALABAMA

THE VERY REVEREND BRYAN W. JERABEK, JCL, RECTOR

### LITURGICAL SCHEDULE

SUNDAY MASSES: SATURDAY 5:00PM (ANTICIPATED), SUNDAY 7:15, 8:30, & 11:00AM

WEEKDAY MASSES: MONDAY-FRIDAY, 12:10PM

CONFESSIONS: MONDAY-FRIDAY, 11:30AM-12:00PM; SATURDAY, 3:00-4:30PM OR BY APPOINTMENT