

# THE CATHEDRAL OF SAINT PAUL

BIRMINGHAM, ALABAMA

MOST REVEREND STEVEN J. RAICA, BISHOP

VERY REVEREND BRYAN W. JERABEK, PASTOR & RECTOR

## THE TWELFTH SUNDAY IN ORDINARY TIME

JUNE 25, 2023



*Welcome to the Cathedral of Saint Paul. The order of Mass can be found on page 3 in Sunday's Word.*

### PRELUDE

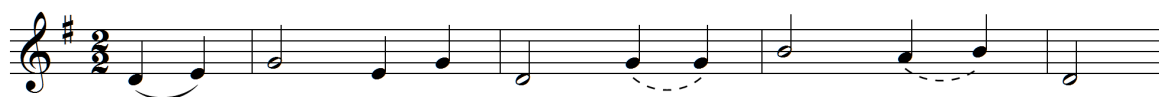
"CHRISTUS, DER UNS SELIG MACHT" ("CHRIST JESUS, WHO MAKEST US GLAD")

DUPRÉ

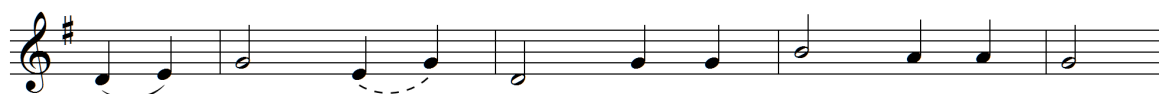
### METRICAL ENTRANCE ANTIPHON

DOMINUS FORTITUDO

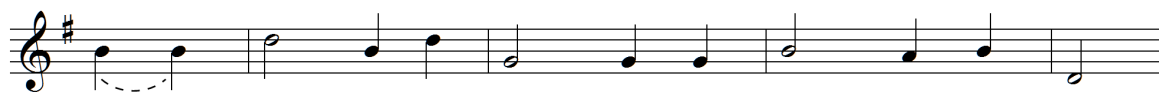
FOUNDATION



The Lord is the strength of his peo - ple: his flock,  
O Lord, un - to you, I lift my cry;  
The mer - ci - ful Lord is my strength and my shield;  
O Fa - ther Al - might - y, the Lord we bless;



a guard of sal - va - tion for his Bless - ed One.  
my rock, my Lord, be not si - lent with me.  
in him, my heart trusts, bless for - ev - er the Lord!  
With Christ and the Spi - rit, One God e - ver blest,



Save your peo - ple, O Lord, bless the peo - ple of God,  
Hear the voice of my plead - ing, my cry for your help,  
And so now He has helped, and so then I re - joice;  
All glo - ry and wor - ship, the Church shall re - sound,



Be their shep - herd and guide 'till all a - ges have run.  
as I raise my hands to your ho - ly a - bode.  
I shall praise him in song with my whole heart and voice.  
As was, and is now, and shall ev - er be giv'n.

Dominus fortitudo plebis suæ, et protector salutarium Christi sui est: salvum fac populum tuum, Domine, et benedic hereditati tuæ, et rege eos usque in sæculum. / The Lord is the strength of His people, a saving refuge for the one He has anointed. Save Your people, Lord, and bless Your heritage, and govern them for ever.

## KYRIE

## MASS XII

VIII

**K** Y-ri- e \* e- lé- i-son. ij. Chrí ste e- lé- i-son. ij. Ký-ri- e

e- lé- i-son. Ký-ri- e \* e- lé- i-son.

## GLORIA

## MASS XII

IV

**G** Ló-ri- a in excélsis Dé- o. Et in térra pax homí-nibus bónae vo-lun-tá-tis.

Laudá-mus te. Benedí-cimus te. Ado-rá-mus te. Glo-ri-fi-cá-mus te. Grá-ti-as á-gimus

tí-bi propter má-gnam gló-ri-am tú- am. Dó-mine Dé-us, Rex caeléstis, Dé-us Pá-ter om-

ní-po- tens. Dó-mine Fí-li uni-gé-ni-te Jé-su Chrís- te. Dó-mine Dé- us, Agnus Dé- i,

Fí-li- us Pá-tris. Qui tóllis peccá-ta mún-di, mi-se-ré-re nó-bis. Qui tóllis peccá-ta

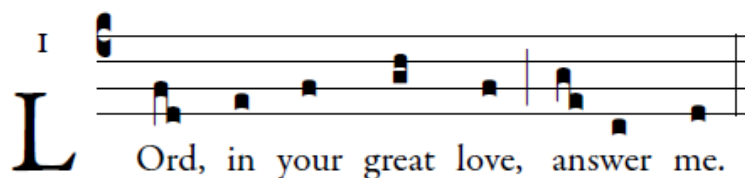
mún-di, sú-scipe depre-ca-ti- ónem nó-stram. Qui sé-des ad délix-te-ram Pá-tris, mi-se-ré-re



## THE LITURGY OF THE WORD

RESPONSORIAL PSALM (5:00PM & 8:30AM)

PSALM 69:8-10, 14 AND 17, 33-35



GRADUAL (11:00AM)

PSALM 90:13,1

Convertere Dómine aliquantulum, et deprecare super servos tuos. *✠ Domine refugium factus es nobis, a generatione et progenie. / Turn back, O Lord, ever so slightly, and be entreated in favor of Your servants. ✠ O Lord, You have been our refuge, from age to age.*

ALLELUIA



The Spirit of truth will testify to me, says the Lord; and you also will testify.

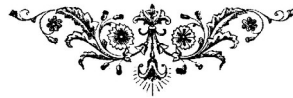
# LITURGY OF THE EUCHARIST

OFFERTORY ANTIPHON (11:00AM) *Perfice gressus meos*

PSALM 16:5,6,7

*Perfice gressus meos in semitis tuis, ut non moveantur vestigia mea: inclina aurem tuam, et exaudi verba mea: mirifica misericordias tuas, qui salvos facis sperantes in te, Domine.*

*Guide my footsteps in Your paths so that my feet do not slip; incline Your ear and hear my words; show Your wonderful mercies, O Lord, Savior of those who place their hope in You.*



## OFFERTORY

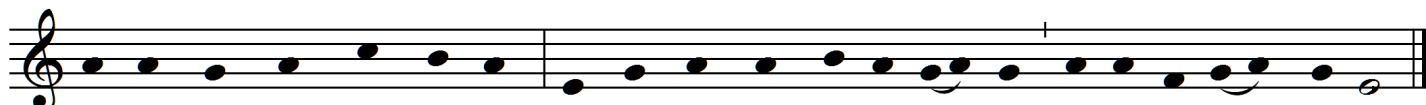
O JESUS, JOY OF LOVING HEARTS

WAREHAM

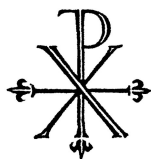
The musical notation is written on three staves in G major (one sharp) and 3/4 time. The melody is simple and hymn-like, with lyrics written below the notes. The lyrics are: O Je - sus, joy of lov - ing hearts, The fount\_ of We taste\_ in you our liv - ing bread, And long\_ to For you\_ our rest - less spir - its yearn Wher - e'er\_ our O Je - sus, ev - er with\_ us stay; Make all\_ our life\_ and our\_ true light, We seek\_ the peace your love im - feast\_ up - on\_ you still; We drink of\_ you, the foun - tain - chang - ing lot\_ is cast; Glad, when your pres - ence we dis - mo - ments calm and bright; O chase the night of sin a - parts, And stand\_ re - joic - ing in\_ your sight. head, Our thirst - ing souls\_ to quench and fill. cern, Blest, when\_ our faith\_ can hold\_ you fast. way, Shed o'er\_ the world\_ your ho - ly light.

II  
**S** An-ctus, \* Sanctus, San-ctus Dóminus De-us Sába-oth. Ple-ni sunt cae-li  
 et ter-ra gló-ri-a tu-a. Ho-sánna in excél-sis. Bene-díctus qui ve-nit  
 in nó-mi-ne Dó-mi-ni. Ho-sánna in excél-sis.

## MYSTERIUM FIDEI



We pro-claim your Death, O Lord, and pro-fess your Res-ur-rec-tion un-til you come a-gain.



## AGNUS DEI

## MASS XI

II  
**A** -gnus Dé-i, \* qui tól-lis peccá-ta mún-di : mi-se-ré-re nó-bis. Agnus  
 Dé-i, \* qui tóllis peccá-ta mún-di : mi-se-ré-re nó-bis. Agnus Dé-i, \* qui tól-lis  
 peccá-ta mún-di : dó-na nó-bis pá-cem.

## HOLY COMMUNION

We invite all Catholics who are properly disposed (i.e., in the state of grace and having fasted for one hour before communion) to come forward in the usual way to receive Holy Communion.

All others, including our non-Catholic guests, may remain in their pews and join us in prayer. Alternatively, to participate in the communion procession and receive a blessing, come forward in the line and cross your arms over your chest as you approach the minister. Thank you.

COMMUNION ANTIPHON (ALL MASSES) *Oculi omnium*

PSALM 145:15

*Please join in the antiphon below after the cantor introduction and between verses.*

**T** HE eyes of all look to you, Lord, and you give  
them their food in due sea-son.

POSTCOMMUNION (11:00AM)

IF YE LOVE ME

THOMAS TALLIS

*If ye love Me, keep My commandments, and I will pray the Father, and He shall give you another Comforter, Even the Spirit of truth.*

*—John 14:15*



## CLOSING

SING PRAISE TO GOD

MIT FREUDEN ZART

Sing praise to God who reigns a - bove, the  
 What God's al - might - y pow'r hath made, his  
 Let all who name Christ's ho - ly Name give  
 God of all cre - a - tion, the God of power, the  
 gra - cious mer - cy keep - eth; by morn - ing glow or  
 God all praise and glo - ry; let all who know his  
 God of love, the God of our sal - va - tion; with  
 eve - ning shade his watch - ful eye ne'er sleep - eth. With -  
 power pro - claim a - loud the won - drous sto - ry! Cast  
 heal - ing balm my soul he fills, and ev - ery faith - less  
 in the king - dom of his might, lo! all is just and  
 each false i - dol from its throne, the Lord is God, and  
 mur - mur stills: to God all praise and glo - ry.  
 all is right: to God all praise and glo - ry.  
 he a - lone: to God all praise and glo - ry.

## VOLUNTARY

MAGNIFICAT FUGUE OCTAVI TONI III

PACHELBEL



## COPYRIGHTS

Responsorial Psalm & Communion Antiphon: Adam Bartlett, © Illuminare Publications, Inc.. All music used with permission. Onelicense #A702187

## MUSIC REMINDERS

- *We are working on the finishing touches of the 2023-2024 Downtown Concert Series.* This year's debut season was a success: as we build on it, would you consider sponsoring an event? No amount is too small, and if one does not wish to underwrite an entire concert, approach friends and fellow parishioners to come together. We will put forth offerings on the Anna Catharine Grace Memorial Pipe Organ, but also concerts for other instruments and choral concerts (which are rather more expensive). Please contact the Director of Music at [Ludwick@stpaulsbhm.org](mailto:Ludwick@stpaulsbhm.org).
- *Thank you, Cathedral Choir!* Cathedral Choir's 2022-2023 season officially ended at Corpus Christi Masses. If you see a choir member, please thank them for the many hours a week they spend beautifying our liturgy! Staff singers continue singing through this Sunday, with a well-deserved break for the month of July. If you are interested in joining choir, this is right time to contact us!



## THE CATHEDRAL OF SAINT PAUL

2120 3RD AVENUE NORTH

BIRMINGHAM, ALABAMA 35203

[WWW.STPAULSBHM.ORG](http://WWW.STPAULSBHM.ORG) 205.251.1279

THE MOST REVEREND STEVEN J. RAICA, JCD  
BISHOP OF BIRMINGHAM IN ALABAMA

THE VERY REVEREND BRYAN W. JERABEK, JCL, RECTOR

### LITURGICAL SCHEDULE

SUNDAY MASSES: SATURDAY 5:00PM (ANTICIPATED), SUNDAY 7:15, 8:30, & 11:00AM

WEEKDAY MASSES: MONDAY-FRIDAY, 12:10PM

CONFESSIONS: MONDAY-FRIDAY, 11:30AM-12:00PM; SATURDAY, 3:00-4:30PM OR BY APPOINTMENT