

THE CATHEDRAL OF SAINT PAUL

BIRMINGHAM, ALABAMA

MOST REVEREND STEVEN J. RAICA, BISHOP

VERY REVEREND BRYAN W. JERABEK, PASTOR & RECTOR

THE ELEVENTH SUNDAY IN ORDINARY TIME

JUNE 16, 2024



Welcome to the Cathedral of Saint Paul. The order of Mass can be found on page 3 in the Sunday's Word booklets found in the pew racks.

PRELUDE

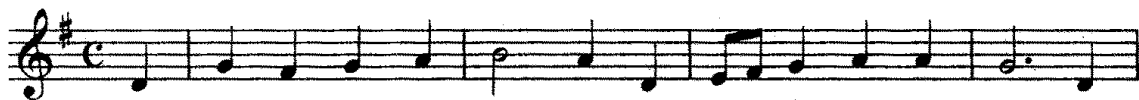
MAGNIFICAT FUGUES ON THE 8TH TONE

JOHANN PACHELBEL

ENTRANCE HYMN

O GOD, ALMIGHTY FATHER

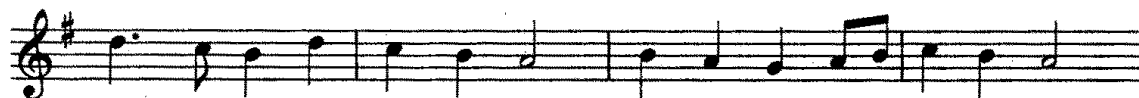
GOTT VATER SEI GEPRIESEN



1. O God, al-might - y Fa - ther, Cre - a - tor of all things, The
2. O Je - sus, Word in - car - nate, Re - deem-er most a - dored, All
3. O God, the Ho - ly Spir - it, Who lives with - in our soul, Send



heav - ens stand in won - der, While earth your glo - ry sings.
glo - ry, praise, and hon - or Be yours, O sov'-reign Lord.
forth your light and lead us To our e - ter - nal goal.



O most ho - ly Trin - i - ty, Un - di - vid - ed u - ni - ty,



Ho - ly God, might - y God, God im - mor - tal be a - dored!

ENTRANCE ANTIPHON (8:30 & 11:00AM) *Exaudi Domine*

CF. PSALM 27:7,9,1

Exaudi, Domine, vocem meam, qua clamavi ad te. Adiutor meus esto, ne derelinquas me, neque despicias me, Deus salutaris meus. ✠ Dominus illuminatio mea: et salus mea: quem timebo?

O Lord, hear my voice, for I have called to You; be my help. Do not abandon or forsake me, O God, my Savior. ✠ *The Lord is my light and my salvation; whom shall I fear?*

VIII

K Y-ri- e * e- lé- i-son. *ij.* Chrí ste e- lé- i-son. *ij.* Ký-ri- e

e- lé- i-son. Ký-ri- e * e- lé- i-son.

GLORIA

IV

G Ló-ri- a in excélsis Dé- o. Et in térra pax homí-nibus bónae vo-lun-tá-tis.

Laudá-mus te. Benedí-cimus te. Ado-rá-mus te. Glo-ri-fi-cá-mus te. Grá-ti- as á-gimus

tí-bi prop-ter má-gnam gló-ri- am tú- am. Dó-mine Dé-us, Rex caeléstis, Dé-us Pá-ter om-

ní-po- tens. Dó-mine Fí-li uni-gé-ni-te Jé-su Chrís- te. Dó-mine Dé- us, Agnus Dé- i,

Fí- li- us Pá-tris. Qui tóllis peccá-ta mún-di, mi-se-ré-re nó-bis. Qui tóllis peccá-ta

mún-di, sú-scipe depre-ca-ti- ónem nó-stram. Qui sé-des ad délix-te-ram Pá-tris, mi-se-ré-re

nó-bis. Quó-ni- am tu só- lus sánctus. Tu só-lus Dó-minus. Tu só-lus Altíssi-mus, Jé-su

Chrís- te. Cum Sáncto Spí- ri- tu, in gló-ri- a Dé- i Pá-tris. A- men.

THE LITURGY OF THE WORD

RESPONSORIAL PSALM (5:00PM & 8:30AM)

PSALM 92



GRADUAL (11:00AM)

PSALM 92:2-3; PSALM 95:3

Bonum est confitēri Dómino: et psallere nómini tuo, Altissime. ✠ *Ad annuntiándum mane misericórdiam tuam, et veritátem tuam per noctem.*

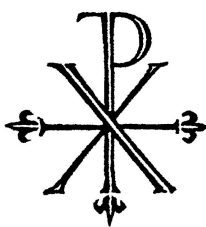
It is good to give thanks to the Lord, to sing to Your name, Most High. ✠ *To proclaim Your kindness at dawn and Your faithfulness throughout the night.*

ALLELUIA

GELOBT SEI GOTT



The seed is the word of God, Christ is the sower. All who come to him will live forever.



LITURGY OF THE EUCHARIST

OFFERTORY ANTIPHON (11:00AM) *Benedicam Dominum*

PSALM 15:7,8

Benedicam Dóminum, qui tribuit mihi intelléctum: providébam Dóminum in conspéctu meo semper: quóniam a dextris est mihi, ne commóvear.

I will bless the Lord, Who counsels me; I set the Lord ever before me; with Him at my right hand, I shall not be moved .

OFFERTORY

DEAR LORD AND FATHER OF MANKIND

REPTON



1. Dear Lord and Fa - ther of man - kind, for - give our fool - ish ways! Re -
2. In sim - ple trust like theirs who heard, be - side the Syr - ian sea, the
3. O Sab - bath rest by Gal - i - lee! O calm of hills a - bove, where
4. Drop thy still dews of — qui - et - ness, till all our striv - ings cease; take
5. Breathe through the heats of — our de - sire thy cool - ness and thy balm; let



clothe us in our right - ful mind, in pur - er lives thy
 gra - cious call - ing of the Lord, let us, like them, with -
 Je - sus knelt to share with Thee the si - lence of e -
 from our souls the strain and stress, and let our or - dered
 sense be dumb, let flesh re - tire; speak through the earth - quake,



ser - vice find, in deep - er rev - erence, praise, in deep - er rev - erence, praise.
 out a — word, rise up and fol - low thee, rise up and fol - low thee.
 ter - ni - ty in - ter - pret - ed by — love! in - ter - pret - ed by love!
 lives con - fess the beau - ty of thy peace, the beau - ty of thy peace.
 wind, and fire, O still, small voice of — calm, O still, small voice of calm.



SANCTUS

MASS XI «ORBIS FACTOR»



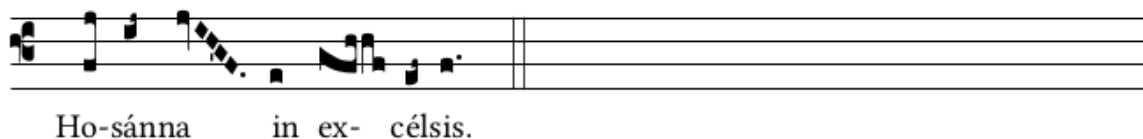
Anctus, * Sánc-tus, Sánc-tus Dó-minus Dé-us Sá-ba-oth.



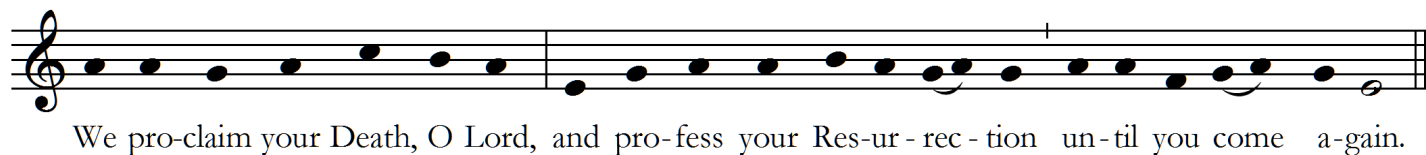
Plé-ni sunt caé-li et tér-ra gló-ri-a tú-a. Ho-sánna in



ex-célsis. Bene-díctus qui vé-nit in nó-mi-ne Dó-mi-ni.

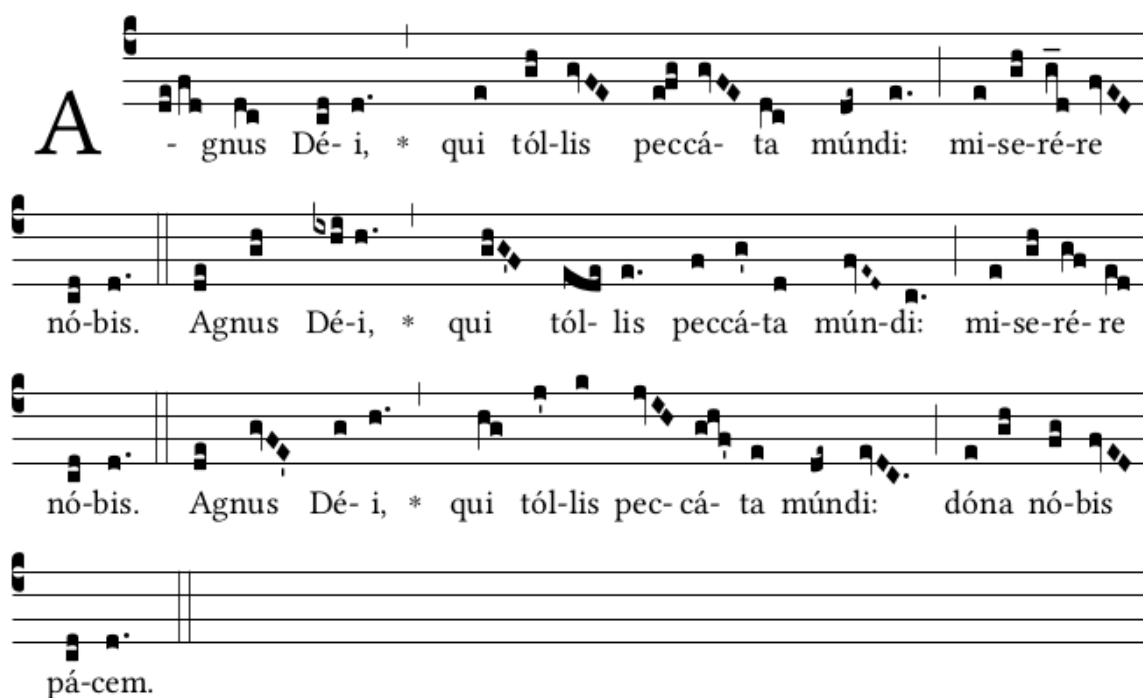


MYSTERIUM FIDEI



AGNUS DEI

MASS XI «ORBIS FACTOR»



HOLY COMMUNION

We invite all Catholics who are properly disposed (i.e., in the state of grace and having fasted for one hour before communion) to come forward in the usual way to receive Holy Communion.

All others, including our non-Catholic guests, may remain in their pews and join us in prayer. Alternatively, to participate in the communion procession and receive a blessing, come forward in the line and cross your arms over your chest as you approach the minister. Thank you.

Please join in the antiphon below after the cantor introduction and between verses.



POSTCOMMUNION (11:00AM)

O SALUTARIS HOSTIA

LÉO DELIBES

O salutaris hostia quae caeli pandis ostium. Bella premunt hostilia; da robur, fer auxilium. Uni trinoque Domino sit sempiterna gloria: qui vitam sine termino, nobis donet in patria. Amen.

O saving victim who opens the gate of heaven, hostile wars press on us: give strength, bring aid. To the Lord, three in one, be everlasting glory, for life without end he gives us in (his) Kingdom. Amen.

PLEASE RESPECT OUR CUSTOM OF STAYING THROUGH THE CONCLUSION OF THE CLOSING HYMN.

THIS IS OUR CORPORATE ACT OF THANKSGIVING AFTER MASS. THANK YOU!

CLOSING

REJOICE, THE LORD IS KING

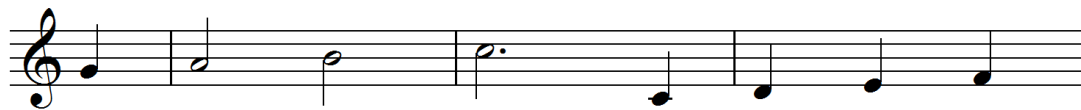
DARWALL'S 148TH



Re - joyce, the Lord is King! Your Lord and King a - dore;
The Lord, our Sa - vior, reigns, the God of truth and love;
His king - dom can - not fail, He rules o'er earth and Heav'n,
Re - joyce in glo - rious hope! Our Lord, the Judge shall come,
To you, O glor - ious God, let all our praise as - cend;



Re - joyce, give thanks and sing, and tri - umph ev - er - more;
When He had purged our stains He took His seat a - bove;
The keys of death and hell are to our Je - sus giv'n;
And take His ser - vants up to their e - ter - nal home.
Fa - ther and Son, with Ho - ly Ghost, praise with - out end!



Re - joyce, a - gain I say, re - joyce!



ABOUT TODAY'S MUSIC

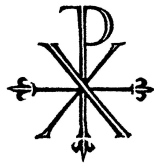
We have now been in the midst of Ordinary Time for the past few weeks of the liturgical year. “Ordinary Time” is a bit of an awkward expression, but consider it as “ordered time” after Pentecost (and before Advent) in which we explore Our Lord’s work in the Gospel. The Church suggests a number of Gregorian Mass ordinary (*Kyrie, Gloria, Sanctus, and Agnus Dei*) settings for this time of year; we alternate the two that are given as first options: Masses XI and XII. Mass XI, also known as “Orbis Factor” after a trope in the *Kyrie*, is one of those which has been used basically non-stop since its composition over 1000 years ago. Mass XII, which we use this week, is similarly venerable. By praying (and singing) these settings, we are linked in faith to many other Christians all around the world who sing these same timeless chants in praise of God. Thank you for helping preserve this repertoire—a responsibility especially given to Cathedrals (and seminaries, etc.) by the Second Vatican Council (cf. *Sacrosanctum Concilium* 114-116), along with the responsibility of fostering choral singing, organ playing, and so on. We also hear the Gradual antiphon in place of the responsorial Psalm at 11am this weekend: these longer, meditative chants serve a different purpose than the processional (entrance/offertory/communion) chants. The gradual encourages us to bask in the beauty of the liturgy as we contemplate the Word of God that is proclaimed in the readings and Gospel. We have our Cathedral Choir staff singers for a few more weeks before their Summer break: today, the ladies present Leo Delibes’ beautiful, small setting of the *O salutaris*. In the French usage of the 19th Century (and for centuries before), a motet like this would’ve been sung just after the consecration in place of the *Benedictus*. Therefore, this motet is short and sweet! A slightly later contemporary of Delibes, Eugène Gigout, contributes the voluntary after Mass. Gigout was long-time organist at the Church of St-Augustin in Paris, and composed primarily for the organ. This piece is an exciting piece in ABA form, with a contrasting middle section. Perfect for Summer!

COPYRIGHTS

Responsorial Psalm: Marie Kremer, Joseph Gelineau, SJ, © GIA Publications, Inc. Communion Antiphon: Andrew Motyka, © www.comunionantiphons.org. All music used with permission. Onelicense #A702187

MUSIC REMINDERS

- Interested in what is coming up next? Visit the Orders of Worship and Music List page, conveniently located under the “Sacred Music” tab of the parish website, www.stpaulsbhm.org.
- Speaking of choirs, new members are always desired for Cathedral Choir. There are two staff (paid) positions available, but also a general need for new members. If you can read music and commit to weekly rehearsals and Masses September-June, you will love this high-achieving, fulfilling choral experience! Contact the Director of Music (Ludwick@stpaulsbhm.org, 205.251.1279x107) for more information!
- As we plan the 2024-2025 Downtown Concert Series, we encourage parishioners and benefactors to consider sponsoring an event! No amount is too small, but if one did not wish to underwrite an entire concert, you might approach friends and fellow parishioners to come together. We put forth offerings on the Anna Catharine Grace Memorial Pipe Organ, but also concerts for other instruments and choral concerts (which are rather more expensive due to the many people involved). Please consider this, and contact the Director of Music!
- We plan to re-start the Cathedral Choral Scholars program for high school students this Fall. In return for studying singing weekly as a member of Cathedral Choir on Wednesday nights and Sunday mornings from August-June, scholars receive a \$1500 scholarship to offset the cost of school. Contact the Director of Music for more information.



THE CATHEDRAL OF SAINT PAUL

2120 3RD AVENUE NORTH

BIRMINGHAM, ALABAMA 35203

WWW.STPAULSBHM.ORG 205.251.1279

THE MOST REVEREND STEVEN J. RAICA, JCD

BISHOP OF BIRMINGHAM IN ALABAMA

THE VERY REVEREND BRYAN W. JERABEK, JCL, RECTOR

LITURGICAL SCHEDULE

SUNDAY MASSES: SATURDAY 5:00PM (ANTICIPATED), SUNDAY 7:15, 8:30, & 11:00AM

WEEKDAY MASSES: MONDAY-FRIDAY, 12:10PM

CONFESSIONS: MONDAY-FRIDAY, 11:30AM-12:00PM; SATURDAY, 3:00-4:30PM OR BY APPOINTMENT