

THE CATHEDRAL OF SAINT PAUL

BIRMINGHAM, ALABAMA

MOST REVEREND STEVEN J. RAICA, BISHOP

VERY REVEREND BRYAN W. JERABEK, PASTOR & RECTOR

THE BAPTISM OF THE LORD

JANUARY 12, 2025



Welcome to the Cathedral of Saint Paul. The order of Mass can be found on page 3 in the Sunday's Word booklets.

VOLUNTARY

"FROM HEAVEN TO EARTH I COME" FROM *CHORALE IMPROVISATIONS*, OP. 65

SIGFRID KARG-ELERT

METRICAL ENTRANCE ANTIPHON *Dilexisti iustitiam*

ST. MAGNUS

A metrical entrance antiphon utilizes the paraphrased text of the entrance antiphon of the day (*Dilexisti iustitiam*, cf. Mt 3:16-17) for the first verse, then takes verses (2-4) from the Psalm appointed to the antiphon (Psalm 45), and concludes with a verse (5) that is a doxology adoring the Holy Trinity.



1. All jus - tice you have loved and taught, But
2. My heart is stirred by no - ble themes, My
3. O fair - er than the sons of men Are
4. Your prais - es ev - er - more I sing, Your
5. Give glo - ry to the liv - ing God: The



scorned in - i - qui - ty, So God a - noints and
song is for the king! And as a wri - ter's
you, O bless - ed one! And gra - cious - ness u -
name I will ex - alt, For - ev - er shall all
Fa - ther, and the Son, And Ho - ly Spi - rit,



rais - es you A - bove your com - pa - ny.
nim - ble pen May my soul free - ly sing.
pon your lips, Blessed by God ev - er - more.
peop - les praise, God's name from age to age.
Pa - ra - clete, The E - ter - nal Three in One.

KYRIE

MASS VIII

VIII

K Y- ri- e e- lé- i-son. *ij.* Chri ste e-

lé- i-son. *ij.* Ký-ri- e e- lé- i-son. Ký-ri- e

e- lé- i-son.

GLORIA

MASS VIII

V

G Ló-ri- a in excélsis Dé- o. Et in térra pax homí-nibus bónae vo-lun tá- tis.

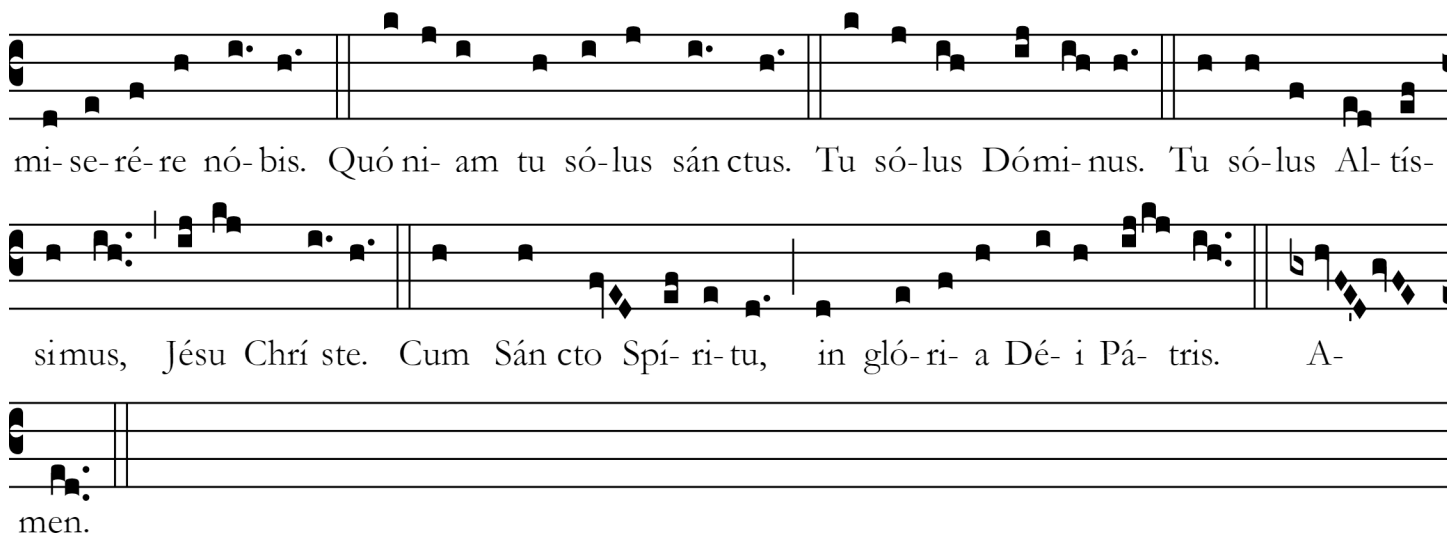
Lau dá- mus te. Benedí- cimus te. A do- rá- mus te. Glo- ri- fí- cámus te. Grá- ti- as á- gi-

mus tí- bi prop ter mágnam gló- ri- am tú- am. Dómine Dé- us, Rex caeléstis, Dé- us Pá-

ter omní- po- tens. Dómine Fí- li uni- géni- te Jé- su Chrís te. Dómine Dé- us, Agnus

Dé- i, Fí- li- us Pá- tris. Qui tóllis peccá- ta mún- di, mi- se- ré- re nó- bis. Qui tóllis

peccá- ta mún di, súscipe depre ca- ti- ónem nós- tram. Qui sédes ad délix te- ram Pá- tris,



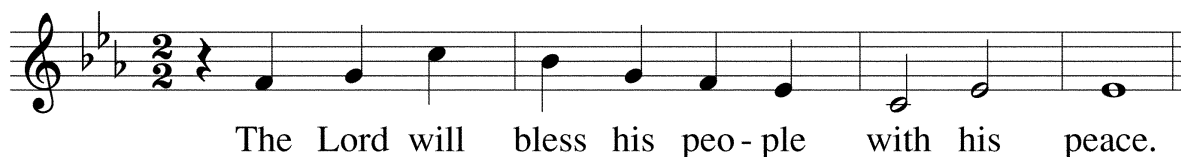
mi-se-ré-re nó-bis. Quo ni- am tu só-lus sán ctus. Tu só-lus Dómi-nus. Tu só-lus Al- tis-
 simus, Jé-su Chrí ste. Cum Sán cto Spí- ri- tu, in gló- ri- a Dé- i Pá- tris. A-
 men.



THE LITURGY OF THE WORD

RESPONSORIAL PSALM

PSALM 29:1-2, 3-4, 3, 9-10



The Lord will bless his peo- ple with his peace.

ALLELUIA

VIII



A L-le-lu- ia, alle-lu- ia, alle-lu- ia.

The heavens were opened and the voice of the Father thundered: This is my beloved Son, listen to him.

LITURGY OF THE EUCHARIST

OFFERTORY

SONGS OF THANKFULNESS AND PRAISE

SALZBURG



1. Songs of thank-ful - ness and praise, Je - sus, Lord, to you we raise,
2. Man - i - fest at Jor-dan's stream, Proph-et, Priest, and King su-preme;
3. Man - i - fest in mak - ing whole Pal - sied limbs and faint-ing soul;
4. Grant us grace to see you, Lord, Mir - rored in your ho - ly word;



Man - i - fest - ed by the star To the sag - es from a - far;
 And at Ca - na, wed - ding guest, In your God-head man - i - fest;
 Man - i - fest in val - iant fight, Quell-ing all the dev - il's might;
 May we im - i - tate you now, And on us your grace en - dow;



Branch of roy - al Da-vid's stem In your birth at Beth - le - hem;
 Man - i - fest in power di - vine, Chang - ing wa - ter in - to wine;
 Man - i - fest in gra-cious will, Ev - er bring-ing good from ill;
 That we like to you may be At your great e - piph - a - ny;



An-thems be to you ad - drest, God in flesh made man - i - fest.
 An-thems be to you ad - drest, God in flesh made man - i - fest.
 An-thems be to you ad - drest, God in flesh made man - i - fest.
 And may praise you ev - er blest, God in flesh made man - i - fest.

OFFERTORY ANTIPHON (11:00AM) *Benedictus qui venit*

PSALM 118:26-27

Benedictus qui venit in nomine Domini: benediximus vobis de domo Domini: Deus Dominus, et illuxit nobis,
 alleluia, alleluia.

Blessed is he who comes in the name of the Lord. We bless you from the house of the Lord; the Lord God is our light, alleluia, alleluia.

SANCTUS

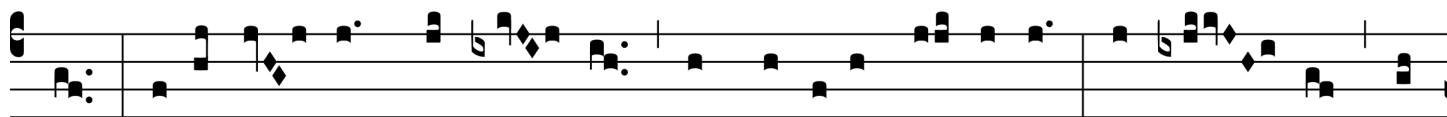
MASS VIII

VI

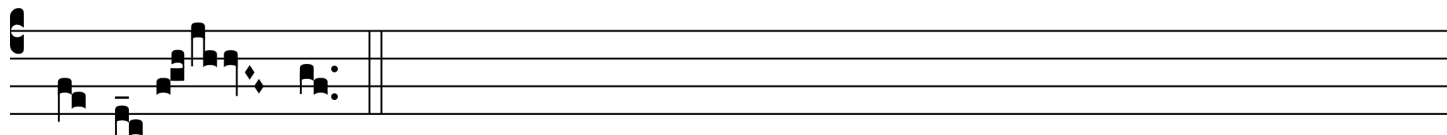
S An- ctus, * San ctus, San- ctus DÓ- mi- nus De- us Sá-



ba- oth. Pleni sunt cæ- li et ter- ra gló- ri- a tu- a. Ho- sán na in excél-



sis. Bene- dí- ctus qui ve- nit in nó mine Dó- mi- ni. Ho- sán- na in



ex cél- sis.

MYSTERIUM FIDEI



We pro-claim your Death, O Lord, and pro-fess your Res-ur - rec - tion un-til you come a-gain.

AMEN (8:30 & 11:00AM)



A - men, a - men, a - men.

AGNUS DEI

MASS VIII



A - gnus De- i, * qui tollis peccá-ta mun-di : mi-se-ré- re no- bis. Agnus



De- i, * qui tol- lis peccá-ta mun-di : mi-se-ré- re no- bis. A-gnus De- i, *



qui tollis peccá-ta mun-di : dona no- bis pa- cem.

HOLY COMMUNION

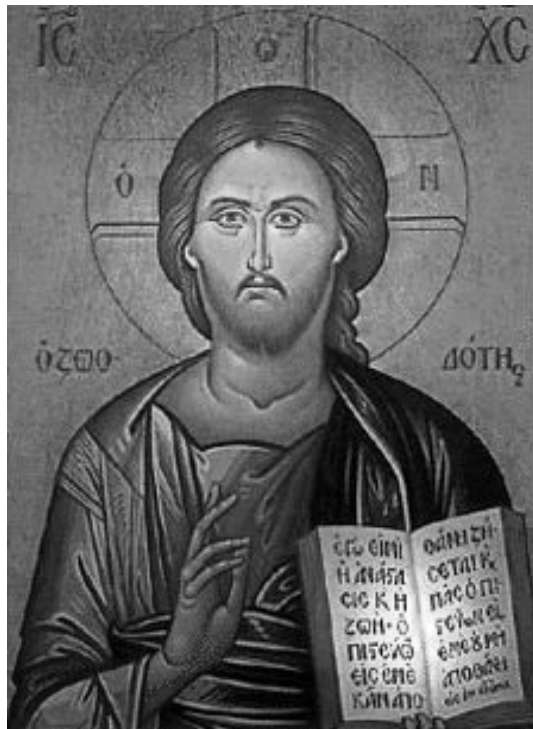
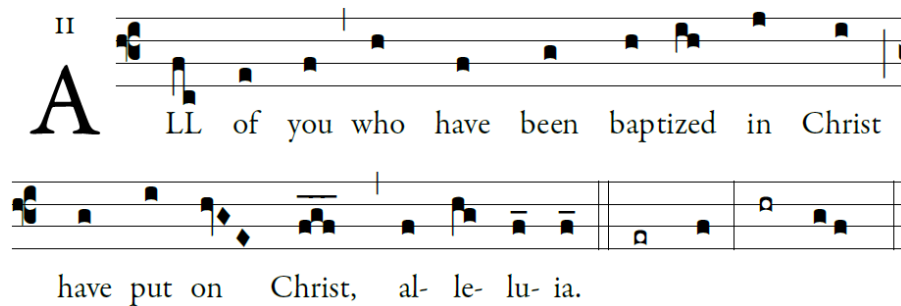
We invite all Catholics who are properly disposed (i.e., in the state of grace and having fasted for one hour before communion) to come forward in the usual way to receive Holy Communion.

All others, including our non-Catholic guests, may remain in their pews and join us in prayer. Alternatively, to participate in the communion procession and receive a blessing, come forward in the line and cross your arms over your chest as you approach the minister. Thank you.

COMMUNION ANTIPHON (ALL MASSES) *Omnes qui in Christo*

GALATIANS 3:27

Please join in singing the refrain below after the cantor introduction and between verses of Psalm 29.



POSTCOMMUNION (11:00AM)

“BEHOLD THE LAMB OF GOD” FROM MESSIAH

G.F. HÄNDEL

Behold the Lamb of God, that taketh away the sins of the world.

—John 1:29

CLOSING HYMN (5:00PM & 11:00AM)

I BIND UNTO MYSELF TODAY

ST. PATRICK'S BREASTPLATE



I bind un - to___ my - self___ to - day___ The strong Name of___ the
I bind this day to me___ for ev - er, By power of faith, Christ's
I bind un - to___ my - self___ to - day___ The power of God___ to
I bind un - to___ my - self___ the Name, The strong Name of___ the



Tri - ni - ty, By in - vo - ca - tion of the same, The Three in
In - car - nation; His bap - tism in___ the Jor - dan Riv - er; His death on
hold and lead, His eye___ to___ watch, his might to stay, His ear to
Tri - ni - ty; By in - vo - ca - tion of the same, The Three in



One, and One in Three. (*repeat for v. 2*)
cross for my sal - vation; His burst - ing from the spi - ced tomb; His ri - ding
heark - en to my need; The wis - dom of my God to teach, His hand to
One, and One in Three. Of whom all na - ture hath cre - ation; E - ter - nal



up___ the heav'n - ly way; His com - ing at___ the
guide, - his shield to ward; The word___ of___ God___ to
Fa - ther, Spi - rit, Word: Praise to___ the___ Lord___ of



day of doom:___ I___ bind un - to___ my - self to - day.
give me speech,___ His___ heav'n - ly___ host to be my guard.
my sal - va - tion, Sal - va - tion is___ of Christ the Lord.

VOLUNTARY

"LIFT UP YOUR HEADS, YE GATES" FROM *CHORALE IMPROVISATIONS*, OP. 65

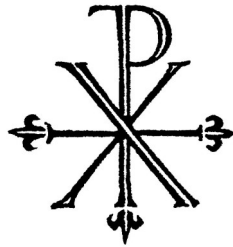
SIGFRID KARG-ELERT

COPYRIGHTS

Responsorial Psalm: Michel Guimont, © GIA Publications, Inc. Communion Antiphon: Adam Bartlett, © Illuminare Publications, Inc. All music used with permission. Onelicense #A702187

MUSIC REMINDERS

- PLEASE JOIN US FOR THE NEXT INSTALLATION OF OUR DOWNTOWN CONCERT SERIES. On **Sunday, February 23, at 4:00pm**, we welcome **THE GESUALDO SIX**, one of the world's best men's vocal ensembles. This is their Alabama debut: the concert is not to be missed...and it's free! Please help support our concert series! More information at stpaulsbhm.org/concerts!
- New members are always welcomed for Cathedral Choir! There is a particular need for basses at this time, so men of the parish, consider joining (or mention to friends outside the parish, who would enjoy the experience of singing with a top-level group!) A balanced voicing allows us to tackle a broader section of the choral repertoire—that often demands bass divisi. More information [HERE](#).



THE CATHEDRAL OF SAINT PAUL

2120 3RD AVENUE NORTH

BIRMINGHAM, ALABAMA 35203

WWW.STPAULSBHM.ORG 205.251.1279

THE MOST REVEREND STEVEN J. RAICA, JCD

BISHOP OF BIRMINGHAM IN ALABAMA

THE VERY REVEREND BRYAN W. JERABEK, JCL, RECTOR

LITURGICAL SCHEDULE

SUNDAY MASSES

SATURDAY 5:00PM (ANTICIPATED), SUNDAY 7:15, 8:30, & 11:00AM

WEEKDAY MASSES

MONDAY-FRIDAY, 12:10PM

CONFESSIONS

MONDAY-FRIDAY, 11:30AM-12:00PM; SATURDAY, 3:00-4:30PM OR BY APPOINTMENT