

THE CATHEDRAL OF SAINT PAUL

BIRMINGHAM, ALABAMA

MOST REVEREND STEVEN J. RAICA, BISHOP

VERY REVEREND BRYAN W. JERABEK, PASTOR & RECTOR

THE ASCENSION OF OUR LORD

JUNE 1, 2025



Welcome to the Cathedral of Saint Paul. The order of Mass can be found on page 3 in the Sunday's Word booklets.

PRELUDE

PRELUDE & FUGUE IN G, BWV 550

J.S. BACH

ENTRANCE ANTIPHON (5:00PM & 8:30AM) *Viri Galilaei*

ACTS 1:11

Please join in the refrain below after the cantor introduction and between psalm verses.

Entr.
7.
M EN of Gal- i- lee, * why gaze in wonder at the
heav-ens ? This Je- sus whom you saw as-cend- ing in- to
heav-en will re-turn as you saw him go, al- le- lu- ia

ENTRANCE ANTIPHON (11:00AM) *Viri Galilæi*

ACTS 1:11; PSALM 46

Viri Galilæi, quid admirâmini aspicientes in cælum? Allelûia: quemâdmodum vidistis eum ascendentem in cælum, ita véniet, allelûia, allelûia, allelûia. ✠ Omnes gentes pláudite mánibus: iubiláte Deo in voce exsultatiónis. / (Translation of antiphon as above). ✠ All peoples, clap your hands: praise God with a voice of joy.

KYRIE (ALL MASSES)

MASS I

K Y- ri- e * e- lé- i-son. ij. Chrí- ste e- lé- i-son. ij. Ký- ri-
e e- lé- i-son. Ký-ri- e * e- lé- i-son.

V
G Ló-ri- a in excélsis Dé- o. Et in térra pax homí-nibus bónae vo-lun tá- tis.

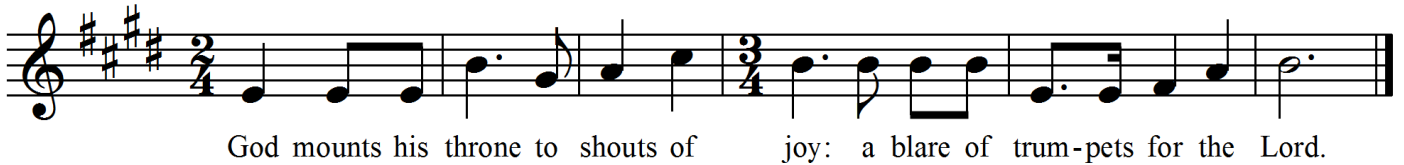
Lau dá- mus te. Benedí- cimus te. A do- rá- mus te. Glo- ri- fi- cámus te. Grá- ti- as á- gi-
 mus tí- bi prop ter mágnam gló- ri- am tú- am. Dómine Dé- us, Rex caeléstis, Dé- us Pá-
 ter omní- po- tens. Dómine Fí- li uni- géni- te Jé- su Chrís te. Dómine Dé- us, Agnus
 Dé- i, Fí- li- us Pá- tris. Qui tóllis peccá- ta mún- di, mi- se- ré- re nó- bis. Qui tóllis
 peccá- ta mún di, súscipe depre ca- ti- ónem nós- tram. Qui sédes ad délix te- ram Pá- tris,
 mi- se- ré- re nó- bis. Quó ni- am tu só- lus sán ctus. Tu só- lus Dómi- nus. Tu só- lus Al- tís-
 simus, Jé- su Chrí ste. Cum Sán cto Spí- ri- tu, in gló- ri- a Dé- i Pá- tris. A-
 men.



THE LITURGY OF THE WORD

RESPONSORIAL PSALM (5:00PM & 8:30AM)

PSALM 47:2-3, 6-7, 8-9



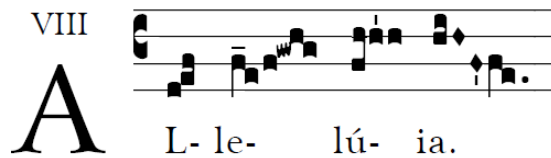
ALLELUIA I (11:00AM)

PSALM 47:6

Alleluia, Alleluia. *℟ Ascendit Deus in jubilatione, et Dominus in voce tubae.*

Alleluia, Alleluia. *℟ God has gone up amidst shouts of joy, the Lord to the sound of the trumpet.*

ALLELUIA (ALL MASSES)



Go and teach all nations, says the Lord; I am with you always, until the end of the world.



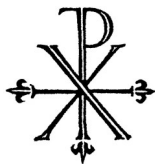
LITURGY OF THE EUCHARIST

OFFERTORY ANTIPHON (11:00AM) *Ascendit Deus*

PSALM 47:5

Ascendit Deus in iubilatione, Dominus in voce tubae, alleluia.

God has gone up amidst shouts of joy, the Lord to the sound of the trumpet, alleluia.



OFFERTORY

A HYMN OF GLORY LET US SING

LASST UNS ERFREUEN

1. A hymn of glo - ry let us sing! New
2. The ho - ly ap - os - tol - ic band Up-
3. To whom the shin - ing an - gels cry, "Why
4. O ris - en Christ, as - cend - ed Lord, All

hymns through-out the world shall ring: Al - le-
on the Mount of Ol - ives stand. Al - le-
stand and gaze up - on the sky?" Al - le-
praise to you let earth ac - cord: Al - le-

lu - ia! Al - le - lu - ia! Christ, by a road be - fore un-
lu - ia! Al - le - lu - ia! And with his faith - ful fol-l'wers
lu - ia! Al - le - lu - ia! "This is the Sav - ior!" Thus they
lu - ia! Al - le - lu - ia! You are, while end - less a - ges

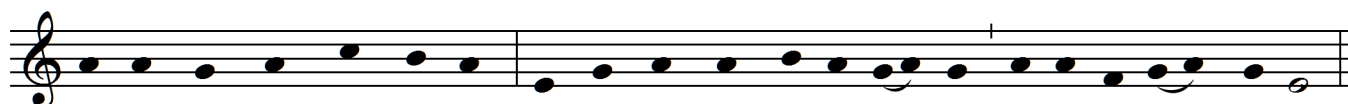
trod. As - cends un - to the throne of God.
see Their Lord as - cend in maj - es - ty.
say, "This is his glo - rious tri - umph day!"
run, With Fa - ther and with Spir - it one.

Al - le - lu - ia! Al - le - lu - ia! Al - le - lu - ia,

Al - le - lu - ia, Al - le - lu - ia!

IV
S An ctus, * San ctus, San ctus Dóminus De- us Sába- oth. Ple- ni sunt
 cæ- li et terra gló- ri- a tu- a. Ho- sánna in ex- célsis. Bene- díctus qui
 ve- nit in nó- mi- ne Dó- mi- ni. Ho- sánna in excél- sis.

MYSTERIUM FIDEI



We pro-claim your Death, O Lord, and pro-fess your Res-ur- rec - tion un-til you come a-gain.



AGNUS DEI (ALL MASSES)

IV
A -gnus De- i, * qui tol- lis peccá- ta mun- di : mi- se- ré- re no- bis.
 Agnus De- i, * qui tol- lis peccá- ta mun- di : mi- se- ré- re no- bis. Agnus
 De- i, * qui tol- lis peccá- ta mun- di : dona no- bis pa- cem.

HOLY COMMUNION

We invite all Catholics who are properly disposed (i.e., in the state of grace and having fasted for one hour before communion) to come forward in the usual way to receive Holy Communion.

All others, including our non-Catholic guests, may remain in their pews and join us in prayer. Alternatively, to participate in the communion procession and receive a blessing, come forward in the line and cross your arms over your chest as you approach the minister. Thank you.

COMMUNION ANTIPHON (ALL MASSES)

Ecce ego vobiscum

Please join in singing the refrain after the cantor introduction and between verses.

Comm.
6. F

B

E- hold, I am with you al-ways, * al- le- lu- ia ;

e- ven to the end of the age, al- le- lu- ia.

POSTCOMMUNION (11:00AM)

O CLAP YOUR HANDS

RALPH VAUGHAN WILLIAMS

O clap your hands, all ye people; shout unto God with the voice of triumph. For the Lord most high is terrible. He is a great King over all the earth. God is gone up with a shout, the Lord with the sound of a trumpet. Sing praises to God; sing praises. Sing praises to our King; sing praises. For God is the King of all the earth. Sing ye praises with understanding. God reigneth over the heathen. God sitteth upon the throne of His holiness. Sing praises unto our King. Sing praises.

—Psalm 47:1-2, 5-8

PLEASE RESPECT OUR CUSTOM OF STAYING THROUGH THE CONCLUSION OF THE CLOSING HYMN.

THIS IS OUR CORPORATE ACT OF THANKSGIVING AFTER MASS. THANK YOU!

CLOSING

HAIL THE DAY THAT SEES HIM RISE

LLANFAIR

1. Hail the day that sees him rise Al - le - lu - ia!

2. There for him high tri - umph waits; Al - le - lu - ia!

3. High-est heav'n its Lord re - ceives, Al - le - lu - ia!

4. See, he lifts his hands a - bove. Al - le - lu - ia!



To his throne a - bove the skies; Al - le - lu - ia!
Lift your heads, e - ter - nal gates; Al - le - lu - ia!
Yet he loves the earth he leaves; Al - le - lu - ia!
See, he shows the prints of love. Al - le - lu - ia!



Christ, a - while to mor - tals given, Al - le - lu - ia!
He has con-quired death and sin; Al - le - lu - ia!
Though re - turn - ing to his throne, Al - le - lu - ia!
Hark, his gra - cious lips be - stow, Al - le - lu - ia!



Re - as - cends his na - tive heaven. Al - le - lu - ia!
Take the King of glo - ry in. Al - le - lu - ia!
Still he calls the world his own. Al - le - lu - ia!
Bless-ings on his church be - low. Al - le - lu - ia!

VOLUNTARY

FESTIVAL TOCCATA

PERCY FLETCHER

MUSIC REMINDERS

- Interested in what is coming up next? Visit the Orders of Worship and Music List page, conveniently located under the “Sacred Music” tab of the parish website, www.stpaulsbhm.org.
- New members are always desired for Cathedral Choir. If you can read music and commit to weekly rehearsals and Masses September-June, you will love this high-achieving, fulfilling choral experience! Contact the Director of Music (Ludwick@stpaulsbhm.org, 205.251.1279x107) for more information! There is a particular need for tenors and basses (men)!
- As we plan the 2025-2026 Downtown Concert Series, we encourage parishioners and benefactors to consider sponsoring an event! No amount is too small! We put forth offerings on the Anna Catharine Grace Memorial Pipe Organ (a top recitalist is usually a \$4000-5000 expense in total), but also concerts for other instruments and choral concerts (which are rather more expensive due to the many people involved, at \$12,000-15,000 each). We offer these recitals as a gift to our community; why not visit with friends in the parish (or community) and help sponsor? We are happy for naming opportunities, as well, if desired. Please contact the Director of Music (Ludwick@stpaulsbhm.org or 205.251.1279x107) for more information!

ABOUT TODAY'S MUSIC

Today we celebrate the Ascension of the Lord. The introit is an especially apt beginning to Mass, with the angels' questioning of the apostles (more or less: "What are you looking at??") stated in bold fashion. *Viri Galilaei* is presented at 11AM in antiphonal fashion, with the ladies and men of the choir alternating phrases of the chant. We present the great choral anthem "O clap your hands" by Ralph Vaughan Williams. This tremendous piece sets Psalm 47 stunningly. Triumphant passages for choir mimicking brass and percussion give way to a brief, chant-like meditative section, which quickly fades into writing announcing God's reign over creation. Although originally intended for choir, organ, and orchestra (or brass ensemble), the organ and choir version loses little in translation. The closing hymn gives us an excellent chance to enjoy the work of Charles Wesley, one of the greatest hymn-writers of all time. Wesley, partially responsible for the beginning of the Methodist movement, had a particular gift for combination of scriptural texts in a metrical hymn format. One even hesitates to say he "paraphrases", since he so artfully combined texts into a new whole, taking a combination of Gospel excerpts and Psalm passages and melding them into something new and wonderful. Ascension Day is a day of great import, with much to meditate upon: hymns like this help us to do so more fully. Bach's *Prelude and Fugue in G*, BWV 550, is an earlier work that is full of exuberance; the prelude, in this manner, is very much like the later BWV 541. The fugue owes much to the North German tradition, with its repeated-note theme, although even here we see development in Italianate style that reflects Bach's larger prerogatives in organ composition and elsewhere. Percy Fletcher's *Festival Toccata* is a showpiece that uses rapidly alternating chords to present the theme, and then develops these motives. Our assistant organist, James, plays the voluntaries this weekend: we are very thankful for his excellent work this past year plus at the Cathedral!



THE CATHEDRAL OF SAINT PAUL

2120 3RD AVENUE NORTH

BIRMINGHAM, ALABAMA 35203

WWW.STPAULSBHM.ORG 205.251.1279

THE MOST REVEREND STEVEN J. RAICA, JCD

BISHOP OF BIRMINGHAM IN ALABAMA

THE VERY REVEREND BRYAN W. JERABEK, JCL, RECTOR

LITURGICAL SCHEDULE

SUNDAY MASSES: SATURDAY 5:00PM (ANTICIPATED), SUNDAY 7:15, 8:30, & 11:00AM

WEEKDAY MASSES: MONDAY-FRIDAY, 12:10PM

CONFESSIONS: MONDAY-FRIDAY, 11:30AM-12:00PM; SATURDAY, 3:00-4:30PM OR BY APPOINTMENT

COPYRIGHTS

Entrance and Communion Antiphons: Fr. Samuel F. Weber, OSB, © St. Meinrad Archabbey. Responsorial Psalm: Michel Guimont, © GIA Publications, Inc. All music used with permission. Onelicense #A702187