

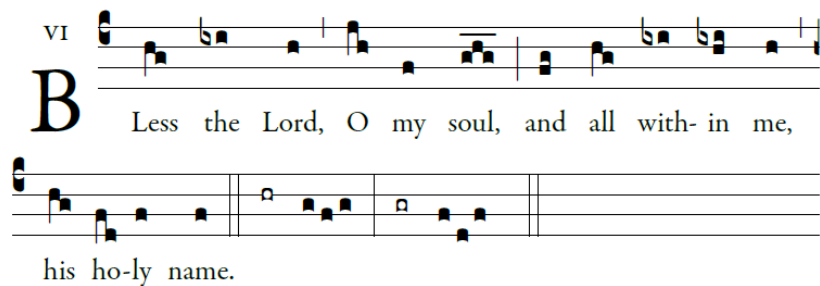
## HOLY COMMUNION

We invite all Catholics who are properly disposed (i.e., in the state of grace and having fasted for one hour before communion) to come forward in the usual way to receive Holy Communion.

All others, including our non-Catholic guests, may remain in their pews and join us in prayer. Alternatively, to participate in the communion procession and receive a blessing, come forward in the line and cross your arms over your chest as you approach the minister. Thank you.

COMMUNION ANTIPHON *Benedic, anima mea* CF. PSALM 103:1

Please join in the refrain below after the cantor introduction and between verses.

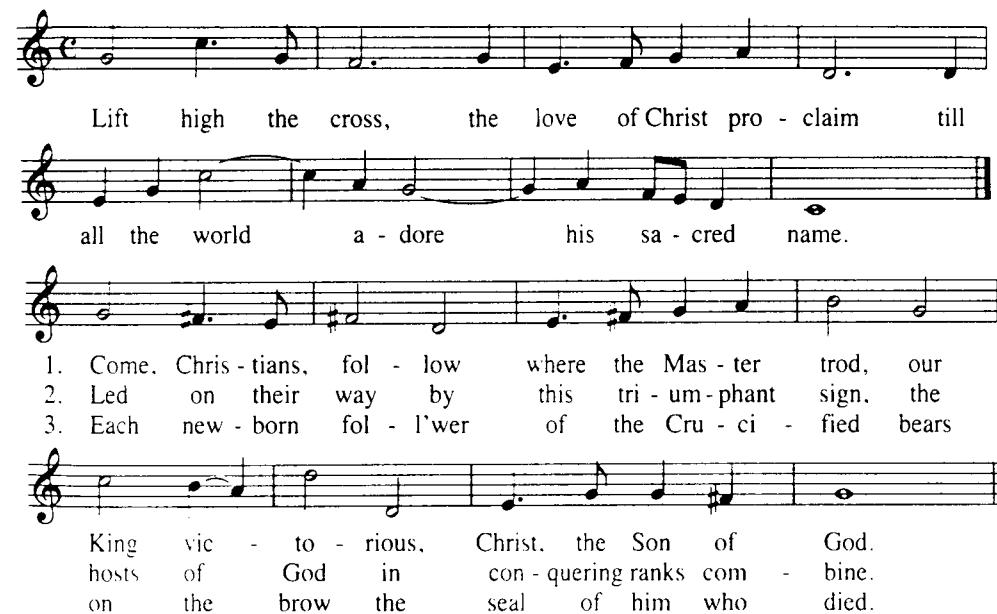


PLEASE RESPECT OUR CUSTOM OF STAYING THROUGH THE CONCLUSION OF THE CLOSING HYMN. THIS IS OUR CORPORATE ACT OF THANKSGIVING AFTER MASS. THANK YOU!

## CLOSING HYMN

LIFT HIGH THE CROSS

CRUCIFER



## VOLUNTARY

## MUSIC REMINDERS

– *The schedule of the 2025-2026 Downtown Concert Series is nearly finalized!* That said, did you know that (according to documents from the Holy See) concerts in a consecrated space may not be ticketed? Concerts in the Cathedral are offered as a free gift. Therefore, would you consider sponsoring an event? Choral concerts range from \$4,000-\$15,000 and will bring Samford University A Cappella Choir, Byrd Ensemble, and The Aeolians to the Cathedral. Organ concerts are toward the lower end of that range, but still cannot be presented without your help. No amount is too small, and if one does not wish to underwrite an entire concert, we can arrange a co-sponsorship. Please contact the Director of Music at [Ludwick@stpaulsbhm.org](mailto:Ludwick@stpaulsbhm.org). This will be an exciting season with many Cathedral “firsts”. Follow [www.stpaulsbhm.org/concerts](http://www.stpaulsbhm.org/concerts) and the Cathedral’s social media for more details; contact [Ludwick@stpaulsbhm.org](mailto:Ludwick@stpaulsbhm.org) for more information on sponsorship!

– *Have you considered joining Cathedral Choir?* Our flagship ensemble, which sings for 11am Mass and holy days, resumes rehearsal in August. We are always in need of new members for this fun, hard-working group. You will make friendships that will last a lifetime! Please contact the Director of Music for more information! [Please note that we are also auditioning for two paid staff singer positions in the soprano and alto sections: spread the word!]

– *Cathedral Children’s Schola Cantorum* resumes in August. If you have a child in grades 3-8, you should consider this fun, high-achieving group! Members sing for Mass 5-6 times a year, will help participate in a concert (new for this year!), and learn basic musicianship, healthy singing, solfège, and music literacy along the way. A nominal fee applies which benefits the parish; please contact [Ludwick@stpaulsbhm.org](mailto:Ludwick@stpaulsbhm.org) for more information!

## COPYRIGHTS

Responsorial Psalm: Richard Proulx, Joseph Gelineau, SJ, © GIA Publications, Inc. Entrance Antiphon and Communion Antiphon: Adam Bartlett, © Illuminare Publications, Inc. All music used with permission. Onelicense #A702187

## THE CATHEDRAL OF SAINT PAUL

BIRMINGHAM, ALABAMA

MOST REVEREND STEVEN J. RAICA, BISHOP

VERY REVEREND BRYAN W. JERABEK, PASTOR & RECTOR

THE SEVENTEENTH SUNDAY IN ORDINARY TIME

JULY 27, 2025

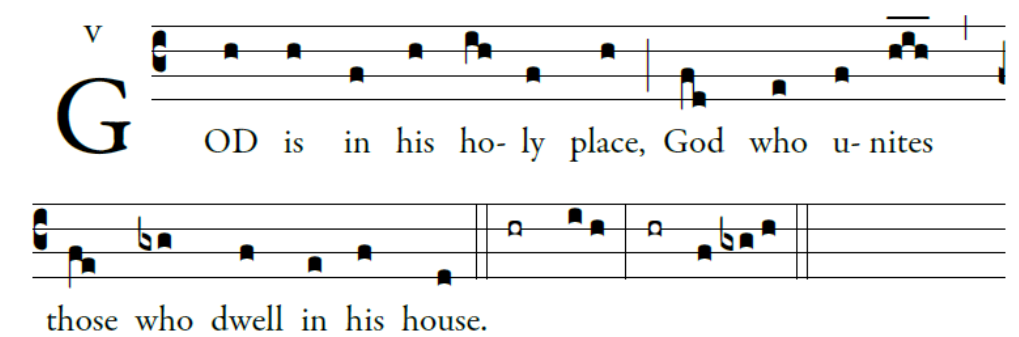


Welcome to the Cathedral. The order of Mass is in *Sunday’s Word* starting on page 3.

## PRELUDE

ENTRANCE ANTIPHON (ALL MASSES) *Deus in loco* CF. PSALM 68:6-7

Please join in the refrain below after the cantor introduction and between verses.



## KYRIE

MASS XI «ORBIS FACTOR»

Please repeat the Kyrie and Christe phrases after the cantor; then join in the final Kyrie.



II

G

Ló-ri- a in excélsis De- o. Et in terra pax

homí-ni-bus bonæ vo-luntá- tis. Laudámus te. Be-ne-

dí- cimus te. Ado-rámus te. Glo-ri-fi-cámus te.

Grá-ti- as á-gimus ti-bi propter magnam gló-ri- am tu- am.

Dómi-ne De- us, Rex cæ-lé-stis, De- us Pa-ter omní-pot-

ens. Dómi-ne Fi- li u-ni-gé-ni-te Je- su Chri-ste.

Dómi-ne De- us, Agnus De- i, Fí- li- us Pa-tris. Qui

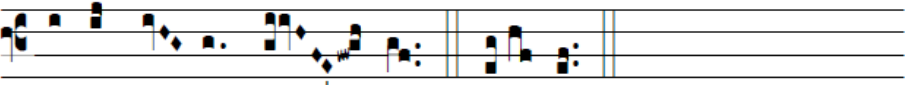
tol-lis peccá-ta mun-di, mi-se-ré-re no-bis. Qui tol-lis

peccá-ta mun-di, sú-sci-pe depreca-ti- ó-nem nostram. Qui

se-des ad d́ex-te-ram Pa-tris, mi-se-ré-re no-bis. Quóni- am

tu so-lus sanctus. Tu so-lus Dómi-nus. Tu so-lus Altís-

simus, Je- su Chri-ste. Cum Sancto Spí-ri-tu, in gló-



ri- a De- i Pa- tris. A- men.



RESPONSORIAL PSALMPSALM 138:1-2, 2-3, 6-7, 7-8



Lord, on the day I called for help, you an- swered me.

ALLELUIA



Al - le - lu - ia, al - le - lu - ia, al - le - lu - ia!

You have received a Spirit of adoption, through which we cry, Abba, Father.

OFFERTORY (ALL MASSES)

ALL MY HOPE ON GOD IS FOUNDEDMICHAEL



1. All my hope on God is\_\_ found - ed; He doth still my

2. Mor - tal pride and earth - ly\_\_ glo - ry, sword and crown be -

3. God's great good - ness e'er\_\_ en - dur - eth, deep his wis - dom

4. Dai - ly doth the\_al - might - y\_\_ Giv - er boun - teous gifts on

5. Still from earth to God e - ter - nal sac - ri - fice of



trust re - new. Me through change and chance he

tray our trust; though with care and toil we

pass - ing thought: splen - dor, light, and life at -

us\_\_ be - stow; his de - sire our soul de -

praise be done, high a - bove all prais - es



guid - eth, on - ly good and on - ly true. God un -

build them, tower and tem - ple fall to dust. But God's

tend him, beau - ty spring - eth out of nought. Ev - er -

light - eth, plea - sure leads us where we go. Love doth

prais - ing for the gift of Christ, his son. Christ doth



known, he a - lone calls my heart to be\_\_ his own.

power, hour by\_\_ hour, is my tem - ple and my tower.

more from his store new-born worlds rise and a - dore.

stand at his hand; joy doth wait on his\_\_ com - mand.

call one and all: ye who fol - low shall not fall.

II

S

Anctus, \* San-ctus, Sanctus Dó-mi-nus De- us


Sá-ba- oth. Ple-ni sunt cæ- li et ter- ra gló- ri- a

tu- a. Ho-sánna in ex- cé-l-sis. Be-ne-díctus qui


ve- nit in nó- mi-ne Dó-mi-ni. Ho-sánna

in ex- cé-l-sis.

MYSTERIUM FIDEI



We pro- claim your Death, O Lord, and pro- fess your Res- ur - rec - tion



un - til you come\_\_ a - gain.

I

A

- gnus De- i, \* qui tol-lis pec-cá- ta mundi: mi-

se-ré-re no-bis. Agnus De- i, \* qui tol- lis peccá-ta

mun-di: mi-se-ré-re no-bis. Agnus De- i, \* qui tol-lis

pec-cá- ta mundi: do-na no-bis pa-cem.